

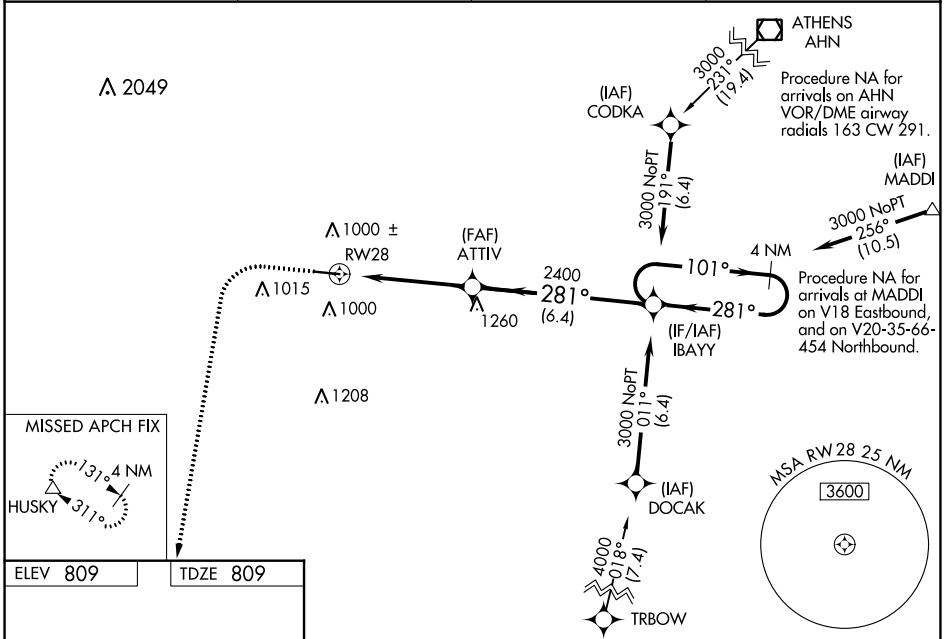
WAAS CH 72710 W28A	APP CRS 281°	Rwy Idg TDZE 809 Apt Elev 809	5500
--	------------------------	---	-------------

RNAV (GPS) RWY 28

COVINGTON MUNI (CVC)

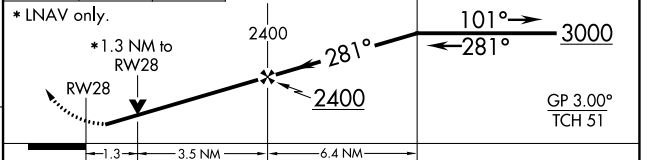
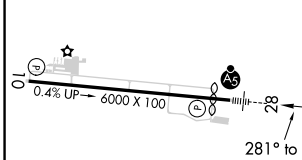
<p>⚠ Baro-VNAV NA when using Lawrenceville altimeter setting. For uncompensated Baro-VNAV systems, LNAV/VNAV NA below -16°C (3°F) or above 54°C (130°F). DME/DME RNP-0.3 NA. Helicopter visibility reduction below ¼ SM NA. When local altimeter setting not received, use Lawrenceville altimeter setting and increase all DA 85 feet, all MDA 100 feet, increase LPV and LNAV/VNAV, LNAV Cat C and D visibility ¼ mile, increase Circling Cat C visibility ¼ mile. VDP NA when using Lawrenceville altimeter setting.</p>	<p>MALS AS</p>	<p>MISSED APPROACH: Climb to 3000 then climbing left turn to 3000 direct HUSKY and hold.</p>
--	----------------------------------	---

AWOS-3 118.725	ATLANTA APP CON 128.575 343.675	CLNC DEL 119.875	UNICOM 123.0 (CTAF)
--------------------------	---	----------------------------	-------------------------------



ELEV 809	TDZE 809
-----------------	-----------------

1300	3000	HUSKY	VGSI and RNAV glidepath not coincident (VGSI angle 3.00/TCH 32).
ATTIV	IBAYY	4 NM Holding Pattern	



CATEGORY	A	B	C	D
LPV DA		1079-7/8	270 (300-7/8)	
LNAV/VNAV DA		1223-13/8	414 (500-13/8)	
LNAV MDA	1260-1	451 (500-1)	1260-13/8	451 (500-13/8)
CIRCLING	1300-1 491 (500-1)	1360-1 551 (600-1)	1360-1½ 551 (600-1½)	1360-2 551 (600-2)

MIRL Rwy 10-28

SE-4, 25 MAR 2021 to 22 APR 2021

SE-4, 25 MAR 2021 to 22 APR 2021