

VORTAC ATL <b>116.9</b> Chan <b>116</b>	APP CRS <b>094°</b>	Rwy Idg TDZE <b>795</b> Apt Elev <b>809</b>
---	------------------------	---

# VOR/DME RWY 10

COVINGTON MUNI (CVC)

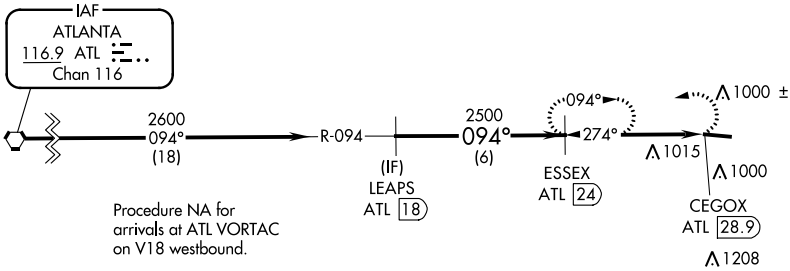
**▼** Helicopter visibility reduction below 3/4 SM NA. When local altimeter setting not received, use Lawrenceville altimeter setting and increase all MDA 100 feet and Cat C/D and Circling Cat C visibilities 1/4 mile.

**▲** MISSED APPROACH: Climbing left turn to 3000 on ATL VORTAC R-094 to ESSEX/ATL 24 DME and hold.

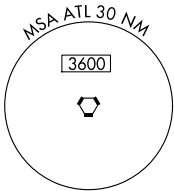
AWOS-3 <b>118.725</b>	ATLANTA APP CON <b>128.575 343.675</b>	CLNC DEL <b>119.875</b>	UNICOM <b>123.0</b> (CTAF) <b>0</b>
--------------------------	---	----------------------------	--

▲2549

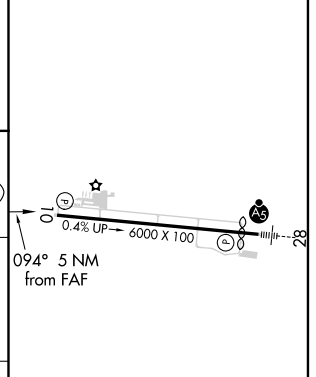
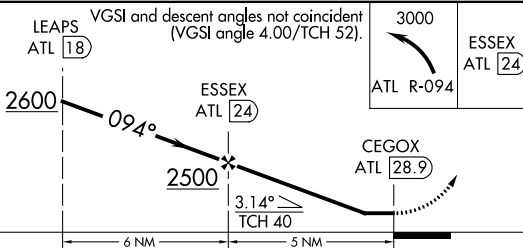
▲2049



Procedure NA for arrivals at ATL VORTAC on V18 westbound.



ELEV 809	TDZE 795
----------	----------



CATEGORY	A	B	C	D
S-10	1320-1	525 (600-1)	1320-1½	525 (600-1½)
CIRCLING	1320-1 511 (600-1)	1360-1¼ 551 (600-1¼)	1360-1½ 551 (600-1½)	1360-2 551 (600-2)

MIRL Rwy 10-28 **0**