

WAAS CH <b>60907</b> <b>W35A</b>	APP CRS <b>348°</b>	Rwy ldg <b>5503</b> TDZE <b>1140</b> Apt Elev <b>1161</b>
--	------------------------	---

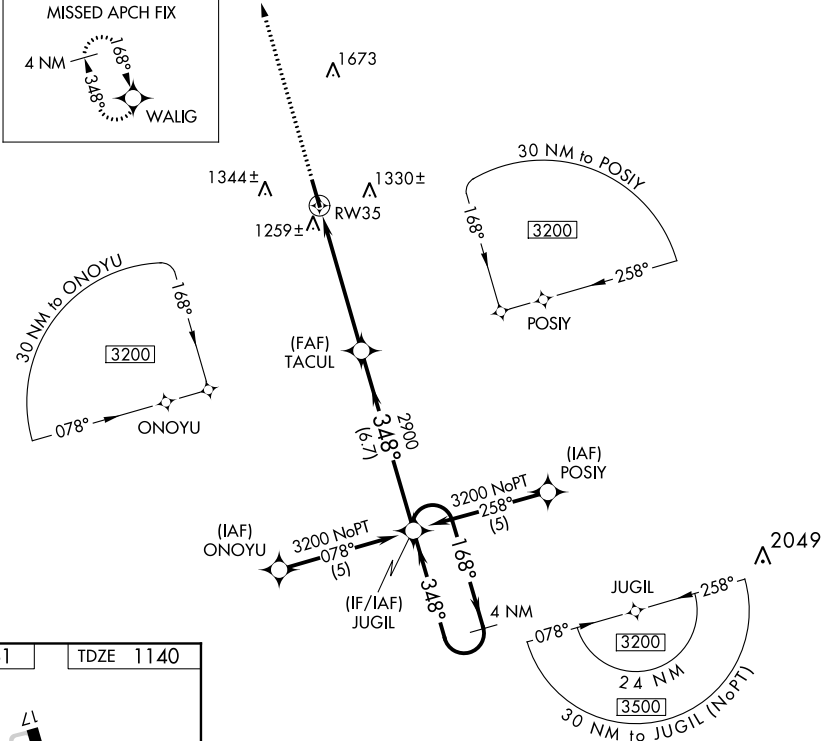
# RNAV (GPS) RWY 35

WEST GEORGIA RGNL-O V GRAY FIELD (CTJ)

**⚠** When local altimeter setting not received, use Newnan Coweta County altimeter setting and increase DA to 1480 feet and all visibilities ¼ mile; increase all MDA 100 feet and LNAV Cat C and Circling Cat C visibilities ¼ mile. DME/DME RNP-0.3 NA. VDP NA when using Newnan Coweta County altimeter setting.

**MISSED APPROACH:**  
Climb to 3200 direct WALIG and hold.

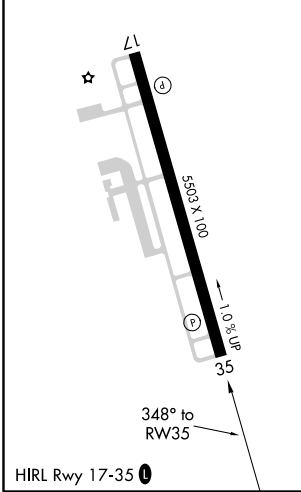
AWOS-3 <b>118.175</b>	ATLANTA APP CON <b>121.0 268.7</b>	CLNC DEL <b>121.6</b>	UNICOM <b>122.975 (CTAF) 0</b>
--------------------------	---------------------------------------	--------------------------	-----------------------------------



SE-4, 25 MAR 2021 to 22 APR 2021

SE-4, 25 MAR 2021 to 22 APR 2021

ELEV <b>1161</b>	TDZE <b>1140</b>
------------------	------------------



3200	WALIG	VGSI and ILS glidepath not coincident (VGSI Angle 3.00/TCH 54).	4 NM Holding Pattern
*LNAV only.	TACUL	JUGIL	GP 3.00° TCH 47
*1.4 NM to RW35		1.4	4 NM
348°		6.7 NM	3200
CATEGORY	A	B	C
LPV DA	1390-1 250 (300-1)		
LNAV/VNAV DA	NA		
LNAV MDA	1580-1	440 (500-1)	1580-1½ 440 (500-1½)
CIRCLING	1660-1 499 (500-1)	1680-1 519 (600-1)	1680-1½ 519 (600-1½)
			1720-2 559 (600-2)