

VOR/DME JVL <b>114.3</b> Chan <b>90</b>	APP CRS <b>118°</b>	Rwy Idg TDZE Apt Elev	<b>N/A</b> <b>N/A</b> <b>817</b>
---	------------------------	-----------------------------	--

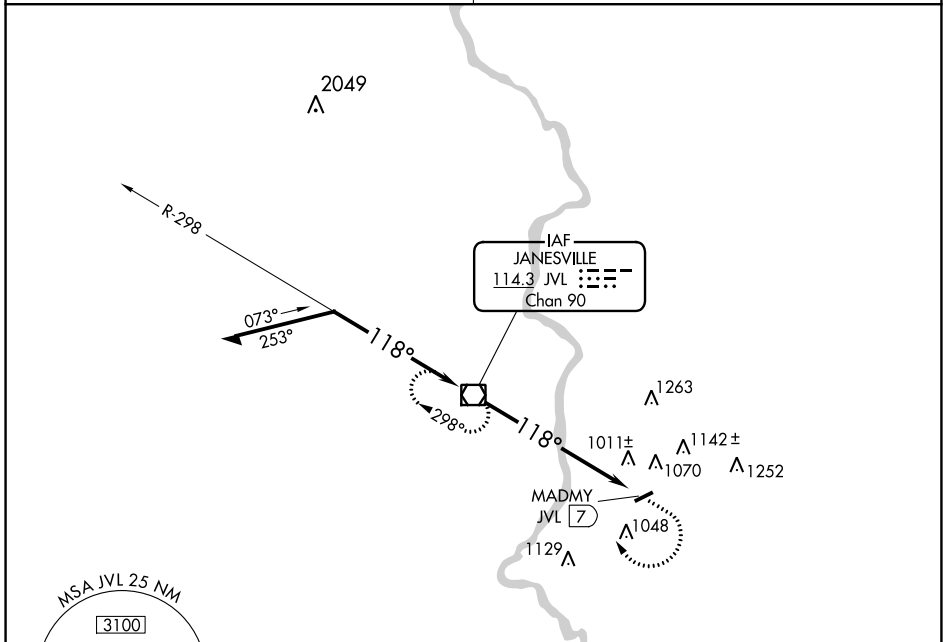
**VOR-A**  
BELOIT (44C)

**NA** Use Janesville altimeter setting, when not received, use Chicago/Rockford Intl altimeter setting.

MISSED APPROACH: Climb to 2700 then right turn direct JVL VOR/DME and hold.

ROCKFORD APP CON **121.0 327.0**

UNICOM **122.7 (CTAF) 0**



ELEV 817

118° 7 NM from FAF

0.3% UP

3300 X 50

CATEGORY	A	B	C	D
CIRCLING	1440-1 623 (700-1)	1540-1 723 (800-1)	NA	
CHICAGO/ROCKFORD INTL ALTIMETER SETTING MINIMUMS				
CIRCLING	1480-1 663 (700-1)	1580-1 763 (800-1)	NA	

LIRL Rwy 7-25 0

FAF to MAP 7 NM					
Knots	60	90	120	150	180
Min:Sec	7:00	4:40	3:30	2:48	2:20

EC-3, 25 MAR 2021 to 22 APR 2021

EC-3, 25 MAR 2021 to 22 APR 2021