

LURAY, VIRGINIA

AL-6229 (FAA)

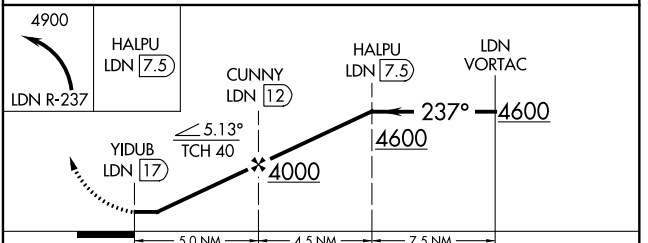
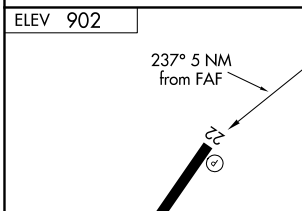
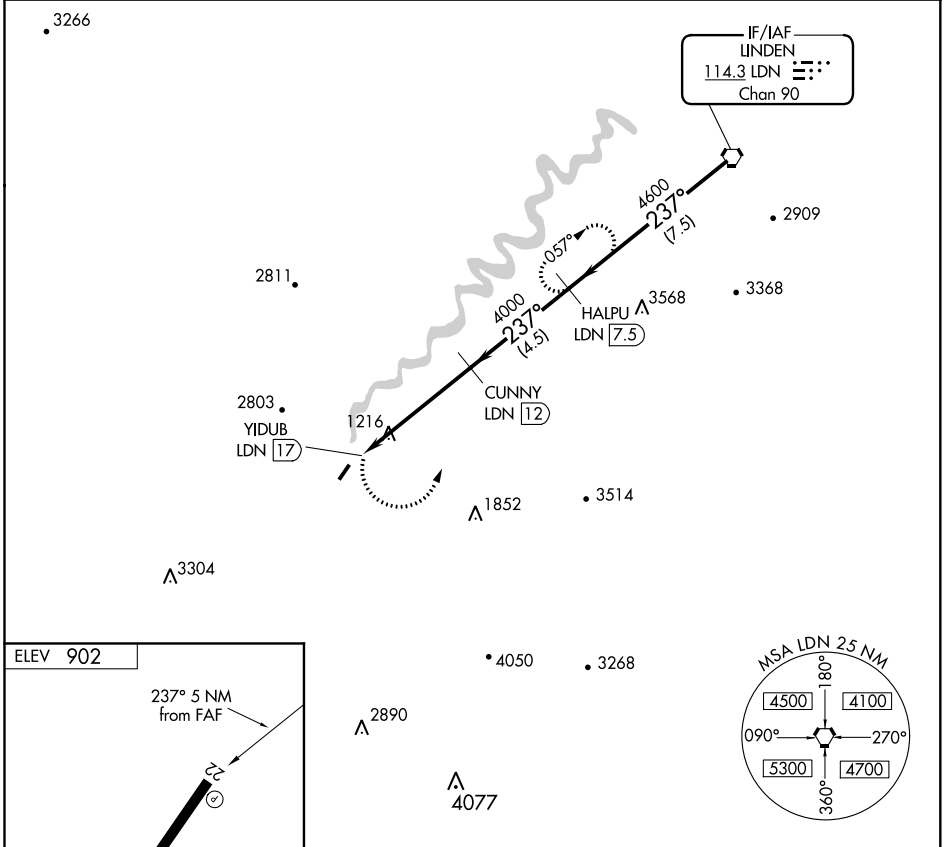
21084

VORTAC LDN 114.3 Chan 90	APP CRS 237°	Rwy Idg TDZE Apt Elev N/A N/A 902
--	------------------------	---

VOR/DME-B
LURAY CAVERNS (LUA)

<p>⚠ Visibility reduction by helicopters NA. When local altimeter setting not received, use Staunton/Waynesboro/Harrisburg altimeter setting and increase all MDA 120 feet.</p>	<p>MISSED APPROACH: Climbing left turn to 4900 on LDN VORTAC R-237 to HALPU/LDN 7.5 DME and hold, continue climb-in-hold to 4900.</p>
--	--

AWOS-3 118.275	WASHINGTON CENTER 133.2 282.2	UNICOM 122.8 (CTAF) 0
--------------------------	---	--



CATEGORY	A	B	C	D
CIRCLING	2200-1¼ 1298 (1300-1¼)	2200-1½ 1298 (1300-1½)	NA	NA

REIL Rwy 4 and 22 **0**
HIRL Rwy 4-22 **0**

LURAY, VIRGINIA
Amdt 3B 25MAR21

38°40'N-78°30'W

LURAY CAVERNS (LUA)
VOR/DME-B

NE-3, 25 MAR 2021 to 22 APR 2021

NE-3, 25 MAR 2021 to 22 APR 2021