

WAAS CH 56524 W04A	APP CRS 040°	Rwy Idg 4401 TDZE 34 Apt Elev 35
--	------------------------	---

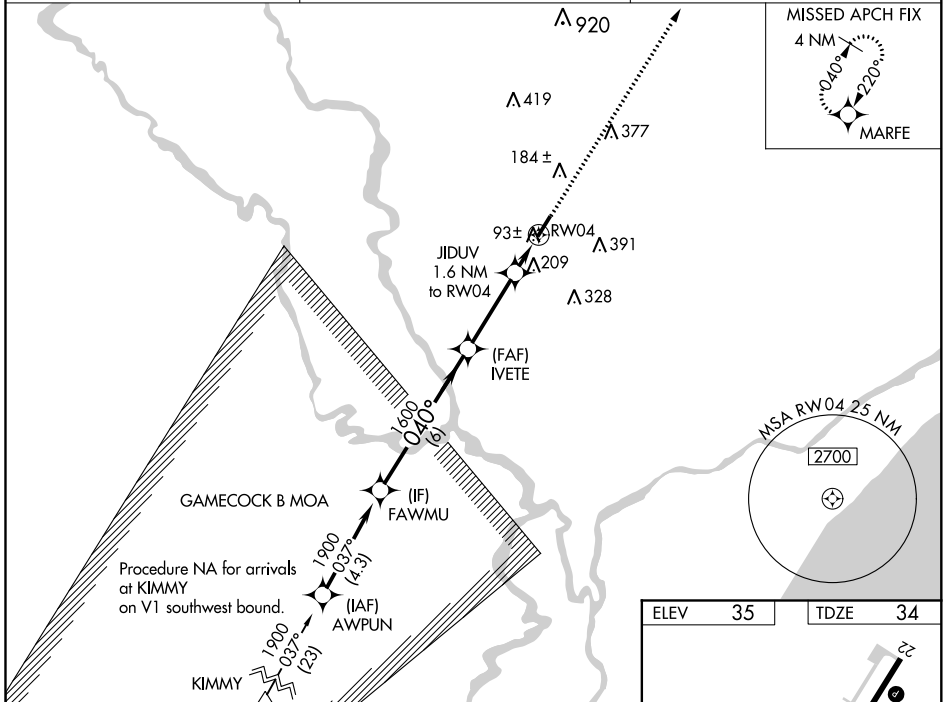
RNAV (GPS) RWY 4

CONWAY-HORRY COUNTY (HYW)

▼ Baro-VNAV NA when using Myrtle Beach altimeter setting. For uncompensated Baro-VNAV systems, LNAV/VNAV NA below -15°C (5°F) or above 43°C (109°F). DME/DME RNP-0.3 NA.
▲ Helicopter visibility reduction below 1 SM NA. When local altimeter setting not received, use Myrtle Beach altimeter setting and increase all DA 32 feet and all MDA 40 feet; increase LNAV/VNAV all Cats and LNAV Cats C and D visibility 1/8 mile. When VGSI inop, Straight-In minimums NA at night. When VGSI inop, Circling Rwy 22 NA at night.

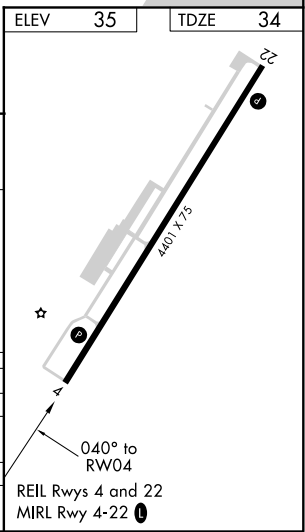
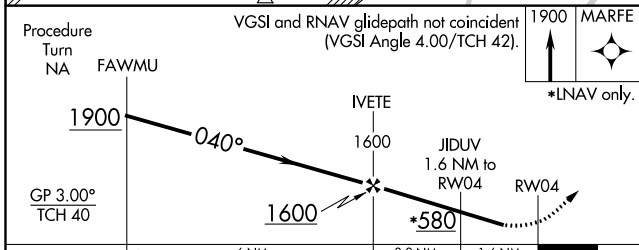
MISSED APPROACH:
Climb to 1900 direct MARFE and hold.

AWOS-3 119.525	MYRTLE BEACH APP CON★ 127.4 257.95	UNICOM 122.7 (CTAF)
--------------------------	--	-------------------------------



SE-2, 25 MAR 2021 to 22 APR 2021

SE-2, 25 MAR 2021 to 22 APR 2021



CATEGORY	A	B	C	D
LPV DA	315-1		281 (300-1)	
LNAV/DA VNAV	525-1¾		491 (500-1¾)	
LNAV MDA	460-1	426 (500-1)	460-1¼	426 (500-1¼)
CIRCLING	520-1	485 (500-1)	485 (500-1½)	600-2 565 (600-2)