

WAAS CH 99627 W24A	APP CRS 239°	Rwy Idg TDZE Apt Elev	4600 428 428
--	------------------------	-----------------------------	---

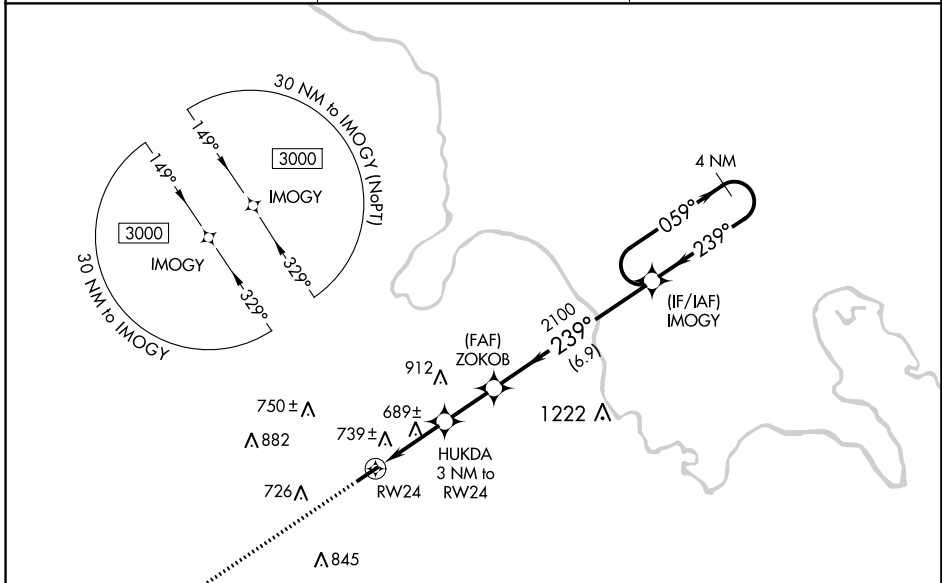
RNAV (GPS) RWY 24

MUHLENBERG COUNTY (M21)

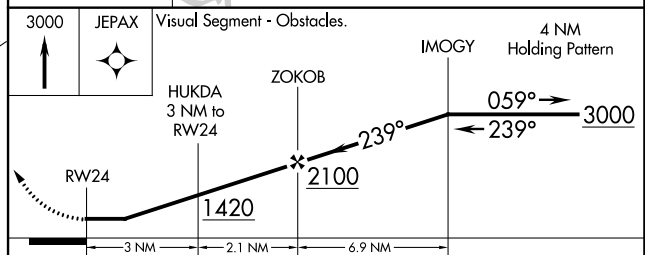
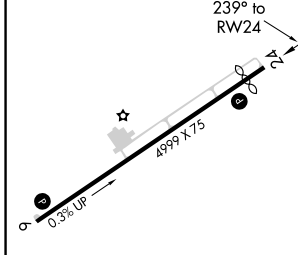
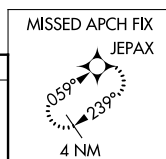
RNP APCH. **▽** DME/DME RNP-0.3 NA. When local altimeter setting not received, use Owensboro altimeter setting and increase all MDAs 80 feet. Increase LP Cats C/D visibility $\frac{3}{8}$ SM and LNAV Cats C/D and Circling Cats C/D visibility $\frac{1}{4}$ SM. Procedure NA at night. Rwy 24, helicopter visibility reduction below 1 SM NA. **▲** NA

MISSED APPROACH:
Climb to 3000 direct JEPAX and hold.

AWOS-3 120.45	CAMPBELL APP CON ★ 118.1 269.525	UNICOM 123.0 (CTAF)
-------------------------	--	-------------------------------



ELEV 428	D	TDZE 428
----------	----------	----------



CATEGORY	A	B	C	D
LP MDA	940-1	512 (600-1)	940- $\frac{1}{8}$	512 (600- $\frac{1}{8}$)
LNAV MDA	1000-1	572 (600-1)	1000- $\frac{1}{8}$	572 (600- $\frac{1}{8}$)
C CIRCLING	1040-1 612 (700-1)	1080-1 652 (700-1)	1180- $\frac{1}{4}$ 752 (800- $\frac{1}{4}$)	1200- $\frac{1}{2}$ 772 (800- $\frac{1}{2}$)

MIRL Rwy 6-24 **Ⓛ**
REIL Rwy 6 and 24 **Ⓛ**

SE-1, 25 MAR 2021 to 22 APR 2021

SE-1, 25 MAR 2021 to 22 APR 2021