

WAAS CH 56527 W06A	APP CRS 059°	Rwy Idg 4999 TDZE 420 Apt Elev 428
--	------------------------	---

RNAV (GPS) RWY 6

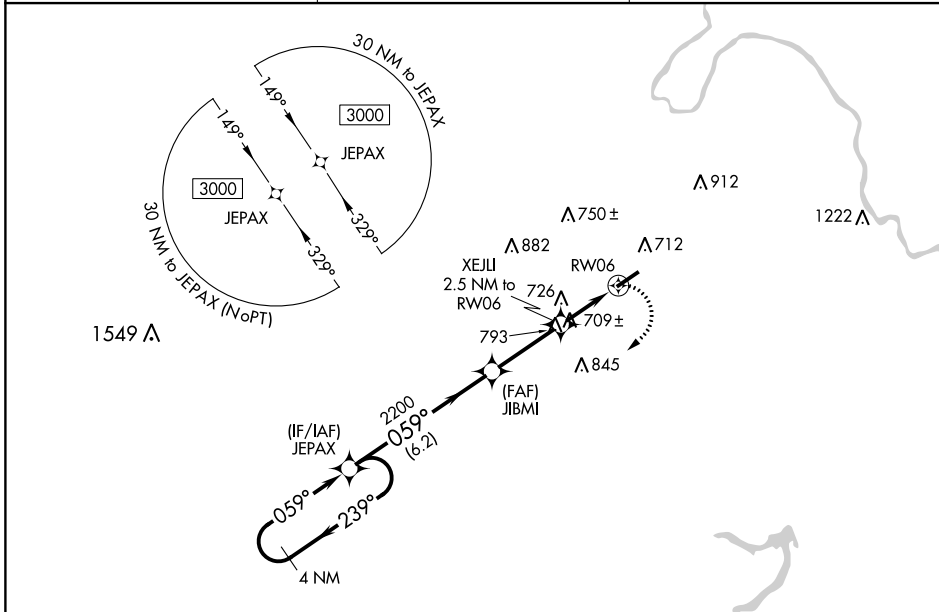
MUHLENBERG COUNTY (M21)

RNP APCH

▼ When local altimeter setting not received, use Owensboro altimeter setting and increase all MDA 80 feet. Increase LP Cats C/D visibility $\frac{1}{8}$ mile, LNAV Cat B and Circling Cats B/D visibility $\frac{1}{4}$ mile, and LNAV Cats C/D and Circling Cat C visibility $\frac{1}{2}$ mile. Rwy 6, helicopter visibility reduction below $\frac{3}{4}$ SM NA.

MISSED APPROACH:
Climbing right turn to 3000 direct JEPAX and hold.

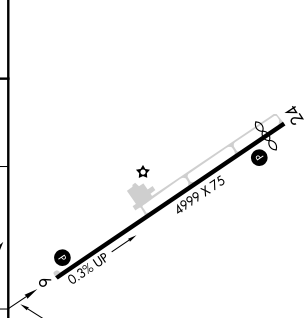
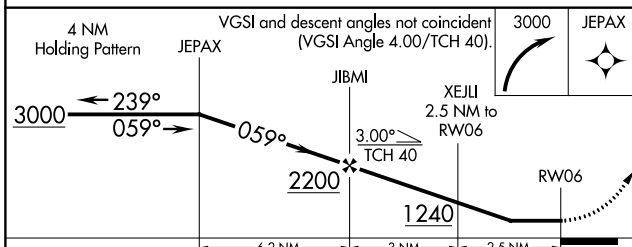
AWOS-3 120.45	CAMPBELL APP CON * 118.1 269.525	UNICOM 123.0 (CTAF) 0
-------------------------	--	---------------------------------



SE-1, 25 MAR 2021 to 22 APR 2021

SE-1, 25 MAR 2021 to 22 APR 2021

ELEV 428	D	TDZE 420
----------	----------	----------



CATEGORY	A	B	C	D
LP MDA	960-1	540 (600-1)	960-1 $\frac{5}{8}$	540 (600-1 $\frac{5}{8}$)
LNAV MDA	1100-1	680 (700-1)	1100-2	680 (700-2)
C CIRCLING	1100-1	672 (700-1)	1180-2 $\frac{1}{4}$ 752 (800-2 $\frac{1}{4}$)	1200-2 $\frac{1}{2}$ 772 (800-2 $\frac{1}{2}$)