

WAAS CH 86638 W24A	APP CRS 235°	Rwy Idg 5500 TDZE 86 Apt Elev 99
--	------------------------	---

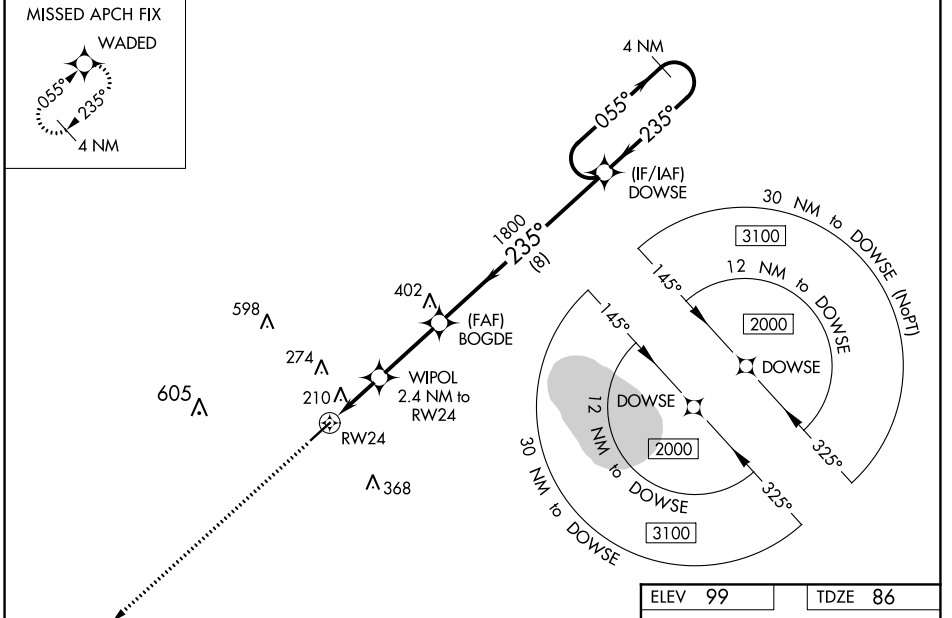
RNAV (GPS) RWY 24

COLUMBUS COUNTY MUNI (CPC)

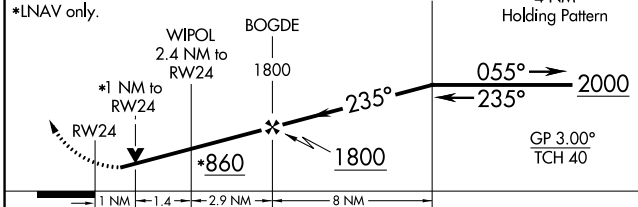
RNP APCH.
 ⚠ For uncompensated Baro-VNAV systems, LNAV/VNAV NA below -15°C (5°F) or above 54°C (130°F). Baro-VNAV and VDP NA when using Elizabethtown altimeter setting.
 ⚠ Helicopter visibility reduction below 3/4 SM NA. When local altimeter setting not received, use Elizabethtown altimeter setting and increase LPV DA to 427 feet, LNAV/VNAV DA to 441 feet and all visibilities 1/4 mile. Increase all MDA 60 feet and all Cat C and D visibilities 1/4 mile.

MISSED APPROACH:
 Climb to 2000 direct
 WADED and hold.

AWOS-3 118.375	MYRTLE BEACH APP CON * 119.2 350.3	UNICOM 122.8 (CTAF) 0
--------------------------	--	---------------------------------



2000 **WADED**
 VGSi and RNAV glidepath not coincident (VGSi Angle 3.25/TCH 42).



CATEGORY	A	B	C	D
LPV DA		374-1	288 (300-1)	
LNAV/VNAV DA		388-1 1/2	302 (300-1 1/2)	
LNAV MDA		460-1	374 (400-1)	
CIRCLING	520-1 421 (500-1)	580-1 481 (500-1)	680-1 1/2 581 (600-1 1/2)	780-2 1/4 681 (700-2 1/4)

ELEV 99	TDZE 86
----------------	----------------

The diagram shows the runway (RWY 24) and the glide path. The runway is 5500 feet long. The glide path is at 3.00 degrees with a TCH of 40 feet. The diagram also shows the 4 NM holding pattern and the missed approach fix (WADED).

SE-2, 25 MAR 2021 to 22 APR 2021

SE-2, 25 MAR 2021 to 22 APR 2021