

WAAS CH 77700 W05A	APP CRS 050°	Rwy Idg TDZE Apt Elev	6001 764 775
--	------------------------	-----------------------------	---

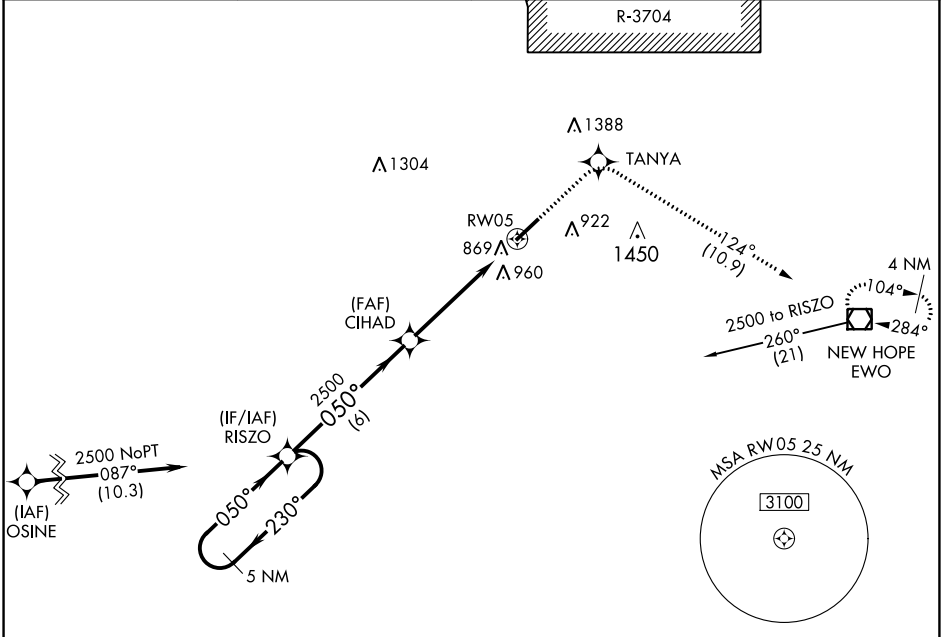
RNAV (GPS) RWY 5

ADDINGTON FIELD (EKK)

⚠ NA DME/DME RNP-0.3 NA. Baro-VNAV NA below -16°C (4°F).
 If local altimeter setting not received, use Louisville Muhammad Ali Intl altimeter setting and increase all DAs/MDAs 120 feet.
 VDP and Baro-VNAV NA when using Louisville Muhammad Ali Intl altimeter setting.

MISSED APPROACH: Climb to 3000 direct TANYA and via 124° track to EWO VOR/DME and hold.

AWOS-3 121.025	LOUISVILLE APP CON 132.075 327.0	CLNC DEL 119.45	UNICOM 122.8 (CTAF) 0
--------------------------	--	---------------------------	--



SE-1, 25 MAR 2021 to 22 APR 2021

SE-1, 25 MAR 2021 to 22 APR 2021

5 NM Holding Pattern		RISZO	CIHAD	3000	TANYA	tr 124°	EWO
GP 3.00 TCH 40							
2500 ← 230°		050° →					
VGSi and RNAV glidepath not coincident (VGSi Angle 3.00/TCH 49).							
		6 NM	3.9 NM	1.4			
CATEGORY	A	B	C	D			
LPV DA	1133-1¼		369 (400-1¼)				
LNAV/VNAV DA	1257-1¾		493 (500-1¾)				
LNAV MDA	1220-1	456 (500-1)	1220-1¼	456 (500-1¼)	1220-1½	456 (500-1½)	
CIRCLING	1260-1¾		485 (500-1¾)		1360-2 585 (600-2)		

