

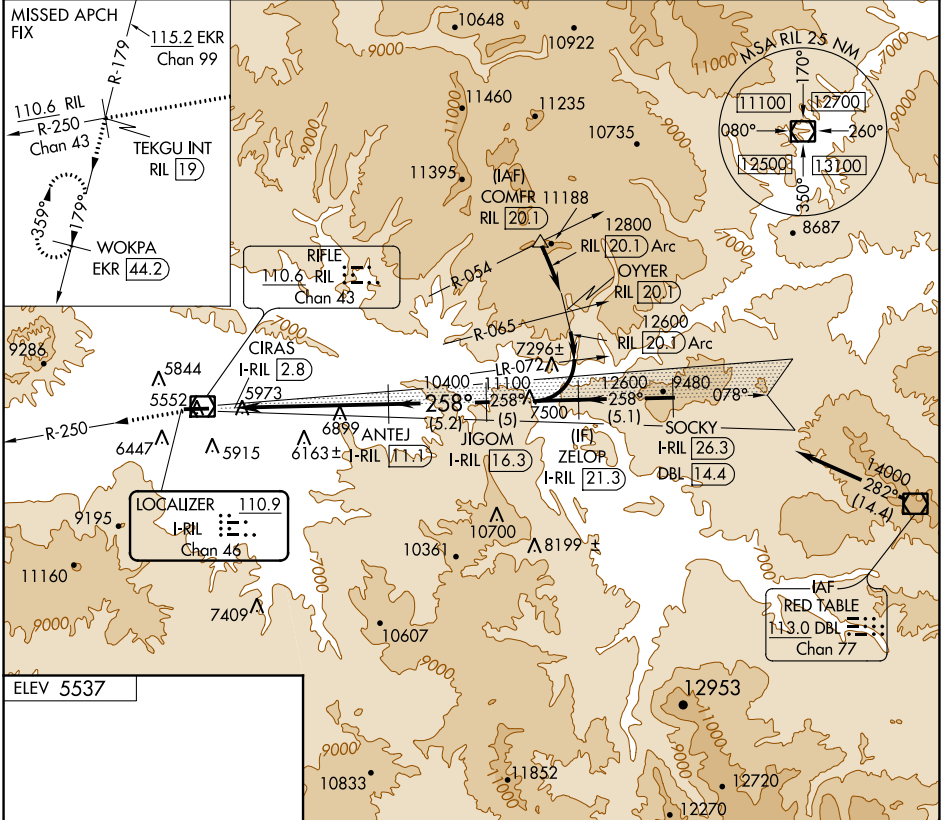
LOC/DME I-RIL 110.9 Chan 46	APP CRS 258°	Rwy Idg TDZE Apt Elev 5537	N/A N/A
--	------------------------	--	--------------------------

LOC/DME-A

RIFLE GARFIELD COUNTY (RIL)

Visibility reduction by helicopters NA. Use I-RIL DME when on localizer course.	MISSED APPROACH: Climb to 13000 on RIL VOR/DME R-250 to TEKGU INT/RIL 19 DME and on EKR VOR/DME R-179 to WOKPA/EKR 44.2 DME and hold, continue climb-in-hold to 13000.
-14°C Circling NA south of Rwy 8-26 at night.	

ASOS 135.275	DENVER CENTER 134.95 327.075	UNICOM 122.8 (CTAF)
------------------------	--	-------------------------------

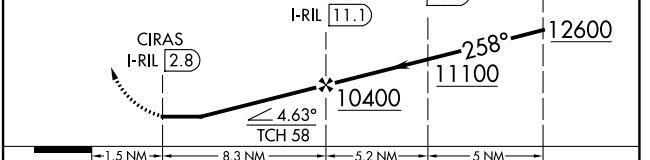


ELEV 5537

HIRL Rwy 8-26

REIL Rwy 8 and 26

13000 ↑ RIL R-250	TEKGU INT RIL 19	EKR R-179	WOKPA EKR 44.2	VGSI and descent angles not coincident (VGSI Angle 3.60/TCH 58).	ZELOP I-RIL 21.3
-------------------------	---------------------	-----------	-------------------	---	---------------------



CATEGORY	A	B	C	D
CIRCLING	7780-1¾	2243 (2300-1¾)	7780-3 2243 (2300-3)	NA

SW-1, 25 MAR 2021 to 22 APR 2021

SW-1, 25 MAR 2021 to 22 APR 2021