

APP CRS	Rwy Idg	7000
259°	TDZE	5537
	Apt Elev	5537

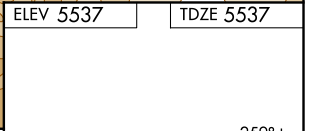
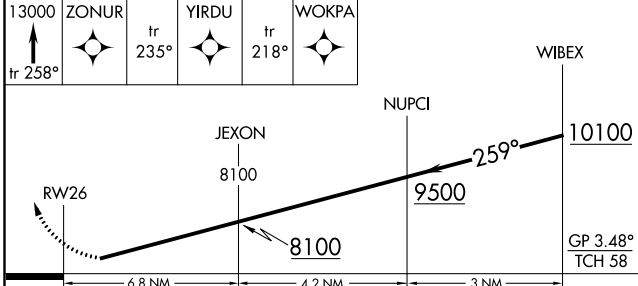
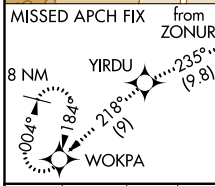
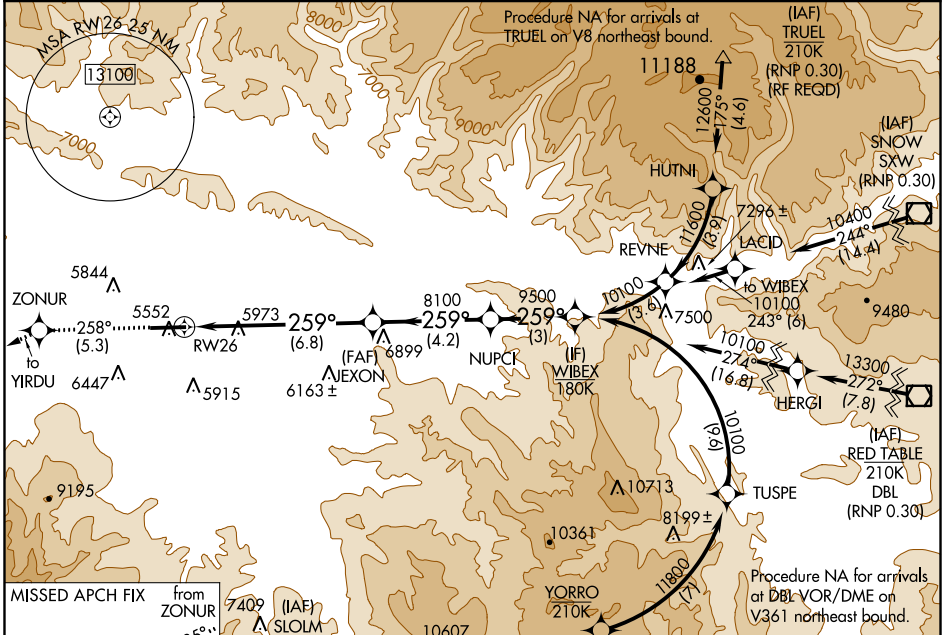
RNAV (RNP) Y RWY 26

RIFLE GARFIELD COUNTY (RIL)

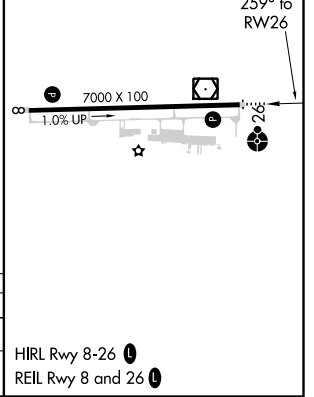
When VGSI inoperative, procedure NA at night. For uncompensated Baro-VNAV systems, procedure NA below -24°C (-11°F) or above 38°C (100°F). GPS required.

ODALS MISSED APPROACH: Climb to 13000 on track 258° to ZONUR and track 235° to YIRDU and track 218° to WOKPA and hold, continue climb-in-hold to 13000.

ASOS 135.275	DENVER CENTER 134.95 327.075	UNICOM 122.8 (CTAF) 0
------------------------	--	---------------------------------



13000	ZONUR	YIRDU	WOKPA
tr 258°	tr 235°	tr 218°	
CATEGORY A		CATEGORY C	
RNP 0.30 DA		NA	
AUTHORIZATION REQUIRED			



SW-1, 25 MAR 2021 to 22 APR 2021

SW-1, 25 MAR 2021 to 22 APR 2021