

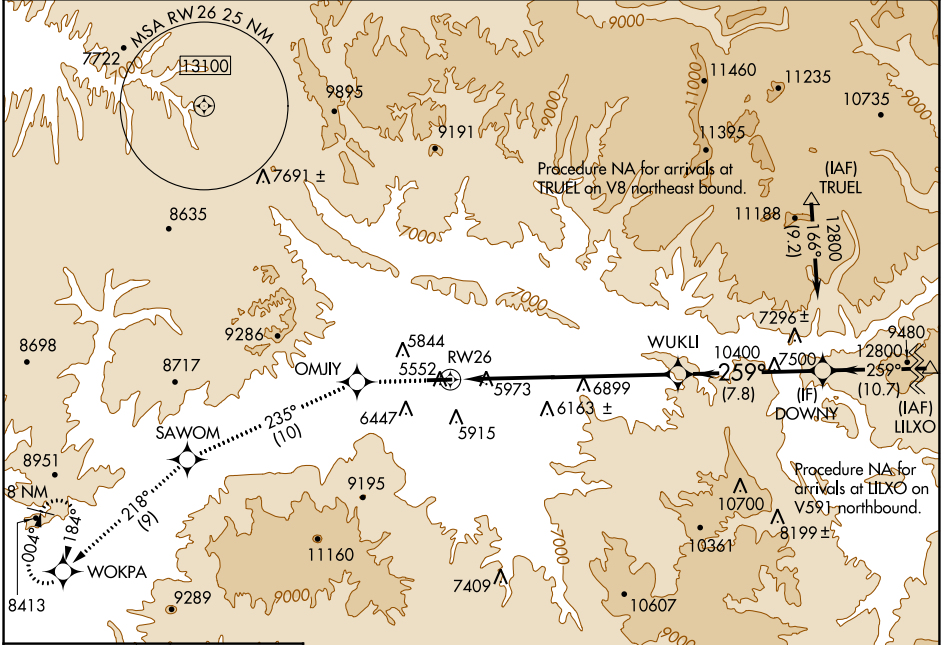
WAAS CH <b>93708</b> <b>W26A</b>	APP CRS <b>259°</b>	Rwy Idg TDZE Apt Elev	<b>7000</b> <b>5537</b> <b>5537</b>
--	------------------------	-----------------------------	---

# RNAV (GPS) X RWY 26

RIFLE GARFIELD COUNTY (R.I.L)

NA -14°C	DME/DME RNP- 0.3 NA.	ODALS MISSED APPROACH: Climb to 13000 direct OMJIY and on track 235° to SAWOM and on track 218° to WOKPA and hold, continue climb-in-hold to 13000.
-------------	----------------------	--

ASOS <b>135.275</b>	DENVER CENTER <b>134.95 327.075</b>	UNICOM <b>122.8 (CTAF)</b>
------------------------	--	-------------------------------



SW-1, 25 MAR 2021 to 22 APR 2021

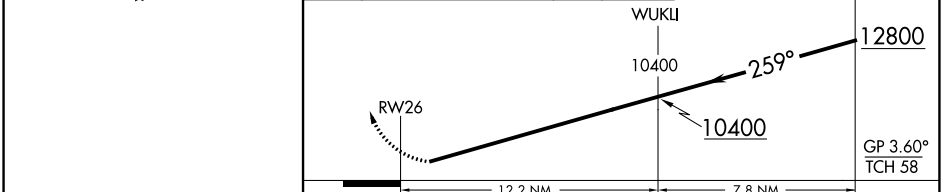
SW-1, 25 MAR 2021 to 22 APR 2021

ELEV 5537	TDZE 5537
-----------	-----------

Missed approach obstructions require a minimum climb gradient of 290 ft/NM to 9600 feet; if unable to meet climb gradient, see RNAV (GPS) W RWY 26.



13000	OMJIY	tr 235°	SAWOM	tr 218°	WOKPA	DOWNY
-------	-------	---------	-------	---------	-------	-------



CATEGORY	A	B	C	D
LPV DA	6300-2¼	763 (800-2¼)		NA