

WAAS CH <b>58025</b> <b>W18A</b>	APP CRS <b>178°</b>	Rwy Idg TDZE Apt Elev	<b>3001</b> <b>1434</b> <b>1434</b>
--	------------------------	-----------------------------	---

**RNAV (GPS) RWY 18**  
JERRY SUMNERS SR AURORA MUNI (2H2)

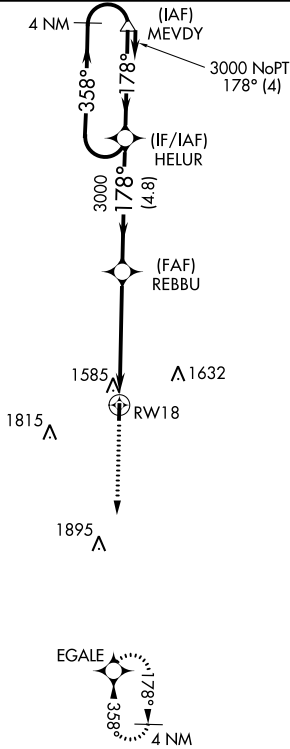
RNP APCH.

Use Springfield altimeter setting; when not received, use Branson altimeter setting and increase all MDA 40 feet. Circling Rwy 36 NA at night. Rwy 18 helicopter visibility reduction below 3/4 SM NA.

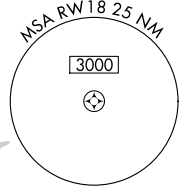
MISSED APPROACH: Climb to 3100 direct EGALE and hold.

SPRINGFIELD APP CON  
**124.95 318.2**

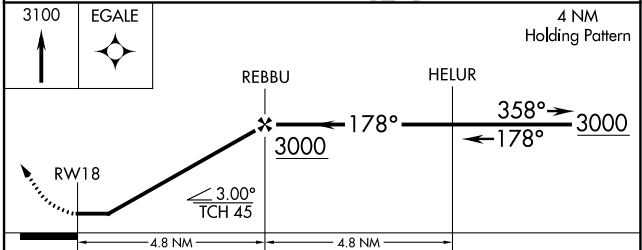
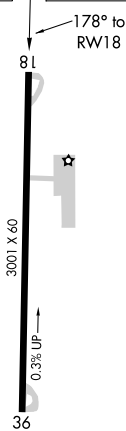
UNICOM  
**122.8 (CTAF) 0**



Procedure NA for arrivals at MEVDY on V14 northeast bound.



ELEV 1434	TDZE 1434
-----------	-----------



CATEGORY	A	B	C	D
LP MDA	1940-1	506 (600-1)		NA
LNAV MDA	1940-1	506 (600-1)		NA
CIRCLING	1980-1	546 (600-1)		NA

MIRL Rwy 18-36  
AURORA, MISSOURI  
Orig-B 19JUL18

36°58'N-93°42'W

JERRY SUMNERS SR AURORA MUNI (2H2)  
**RNAV (GPS) RWY 18**

NC-3, 25 MAR 2021 to 22 APR 2021

NC-3, 25 MAR 2021 to 22 APR 2021