

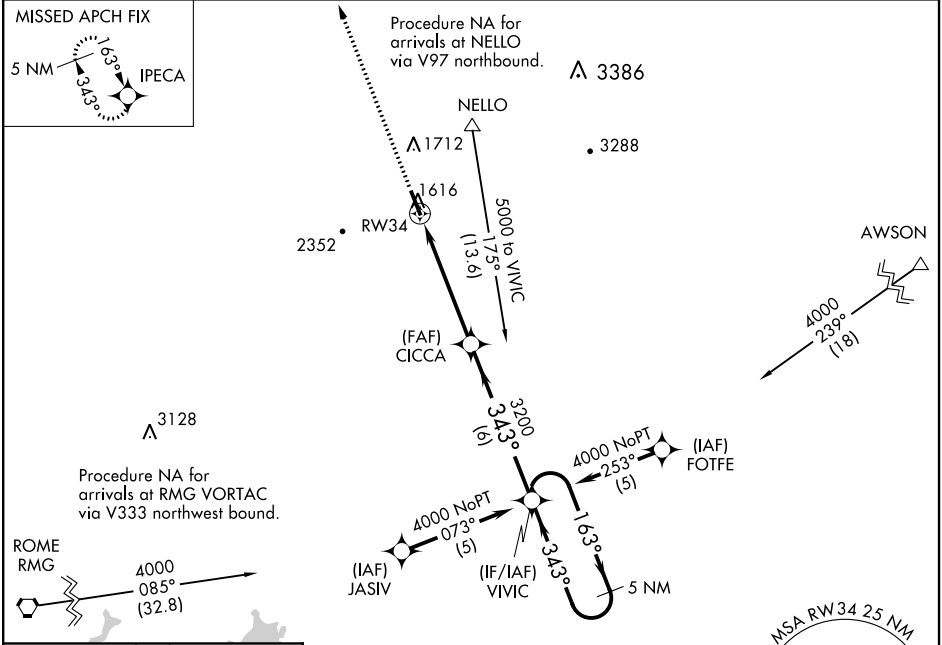
WAAS CH <b>77705</b> W <b>34A</b>	APP CRS <b>343°</b>	Rwy Idg TDZE Apt Elev	<b>5000</b> <b>1535</b> <b>1535</b>
---	------------------------	-----------------------------	---

# RNAV (GPS) RWY 34

PICKENS COUNTY (JZP)

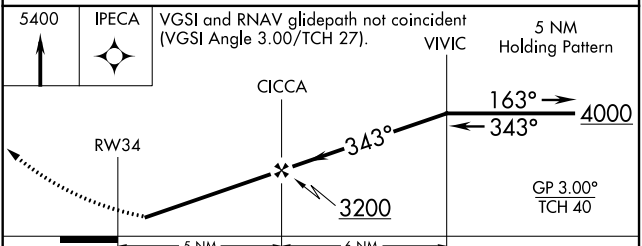
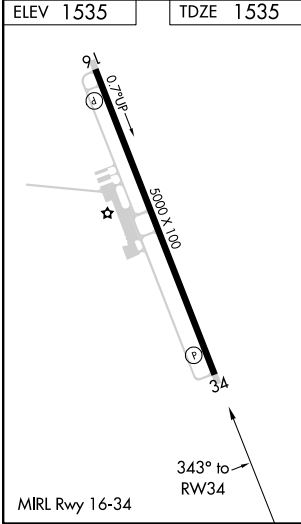
<b>NA</b>	DME/DME RNP-0.3 NA. Visibility reduction by helicopters NA. If local altimeter setting not received, use Cobb County Intl-McCollum Field altimeter setting and increase all LPV DAs to 1922/MDAs 140 feet.	MISSED APPROACH: Climb to 5400 direct IPECA and hold, continue climb-in-hold to 5400.
-----------	--	---

AWOS-3PT <b>118.55</b>	ATLANTA CENTER <b>133.1 342.425</b>	UNICOM <b>122.725</b> (CTAF)
---------------------------	--	---------------------------------



SE-4, 25 MAR 2021 to 22 APR 2021

SE-4, 25 MAR 2021 to 22 APR 2021



CATEGORY	A	B	C	D
LPV DA		1789-1 254 (300-1)		NA
LNAV MDA		1880-1 345 (400-1)		NA
CIRCLING	1960-1 425 (500-1)	2160-1 625 (700-1)	2360-2½ 825 (900-2½)	NA