

WAAS CH <b>70519</b> W33A	APP CRS <b>332°</b>	Rwy Ldg TDZE Apt Elev	<b>5006</b> <b>131</b> <b>132</b>
---------------------------------	------------------------	-----------------------------	---

# RNAV (GPS) RWY 33

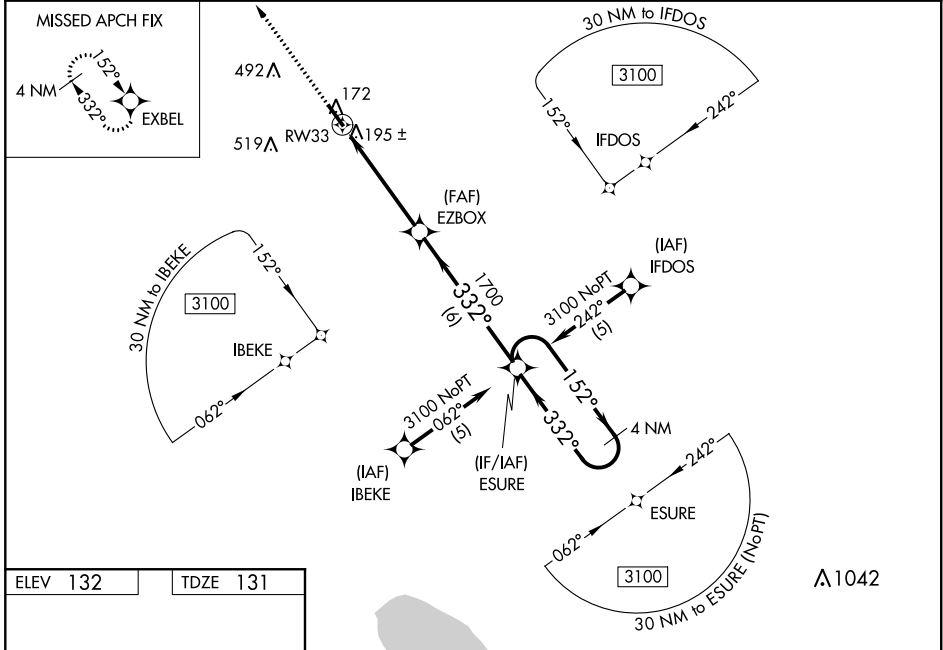
CURTIS L BROWN JR FIELD (EYF)

RNP APCH.

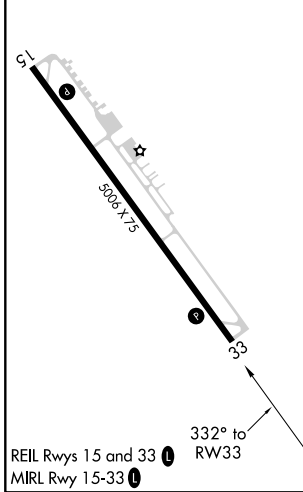
**⚠** Rwy 33 helicopter visibility reduction below 3/4 SM NA. When local altimeter setting not received, use Fayetteville, NC altimeter setting and increase all DA 72 feet and LPV visibility all Cats and LNAV/VNAV all Cats visibility 1/4 mile; increase all MDA 80 feet and increase LNAV visibility Cats C and D 1/4 mile and Circling visibility Cat D 1/2 mile. Baro-VNAV and VDP NA when using Fayetteville, NC altimeter setting. For uncompensated Baro-VNAV systems, LNAV/VNAV NA below -1.5°C (5°F) or above 48°C (118°F).

MISSED APPROACH: Climb to 3100 direct EXBEL and hold.

AWOS-3P <b>119.475</b>	FAYETTEVILLE APP CON <b>133.0 290.25</b>	UNICOM <b>122.8 (CTAF) 0</b>
---------------------------	---	---------------------------------



ELEV 132	TDZE 131
----------	----------

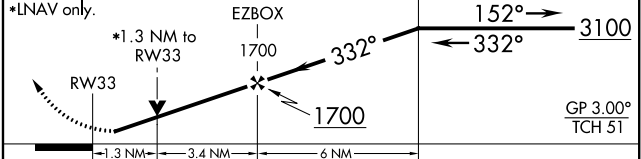


3100 EXBEL

VGSI and RNAV glidepath not coincident (VGSI Angle 3.00/TCH 33).

4 NM Holding Pattern

ESURE



CATEGORY	A	B	C	D
LPV DA		381-3/4	250 (300-3/4)	
LNAV/VNAV DA		465-1 1/4	334 (400-1 1/4)	
LNAV MDA	580-1	449 (500-1)	580-1 1/4 449 (500-1 1/4)	580-1 1/2 449 (500-1 1/2)
CIRCLING	580-1 448 (500-1)	600-1 468 (500-1)	600-1 1/2 468 (500-1 1/2)	800-2 668 (700-2)

SE-2, 25 MAR 2021 to 22 APR 2021

SE-2, 25 MAR 2021 to 22 APR 2021