

|                    |             |          |             |
|--------------------|-------------|----------|-------------|
| VOR/DME <b>FAY</b> | APP CRS     | Rwy Idg  | <b>5006</b> |
| <b>108.8</b>       | <b>152°</b> | TDZE     | <b>132</b>  |
| Chan <b>25</b>     |             | Apt Elev | <b>132</b>  |

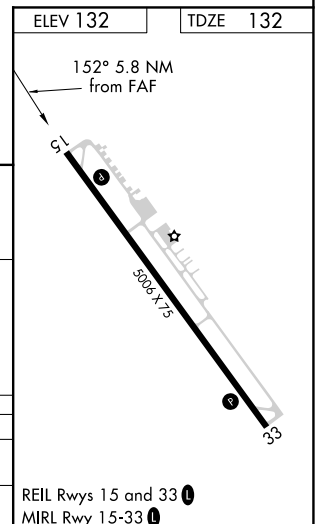
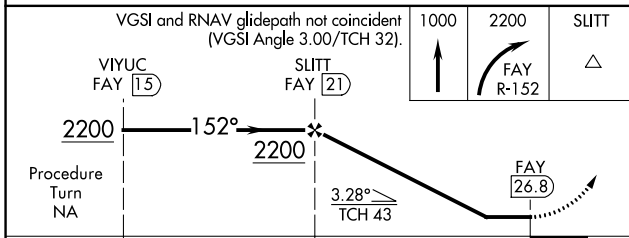
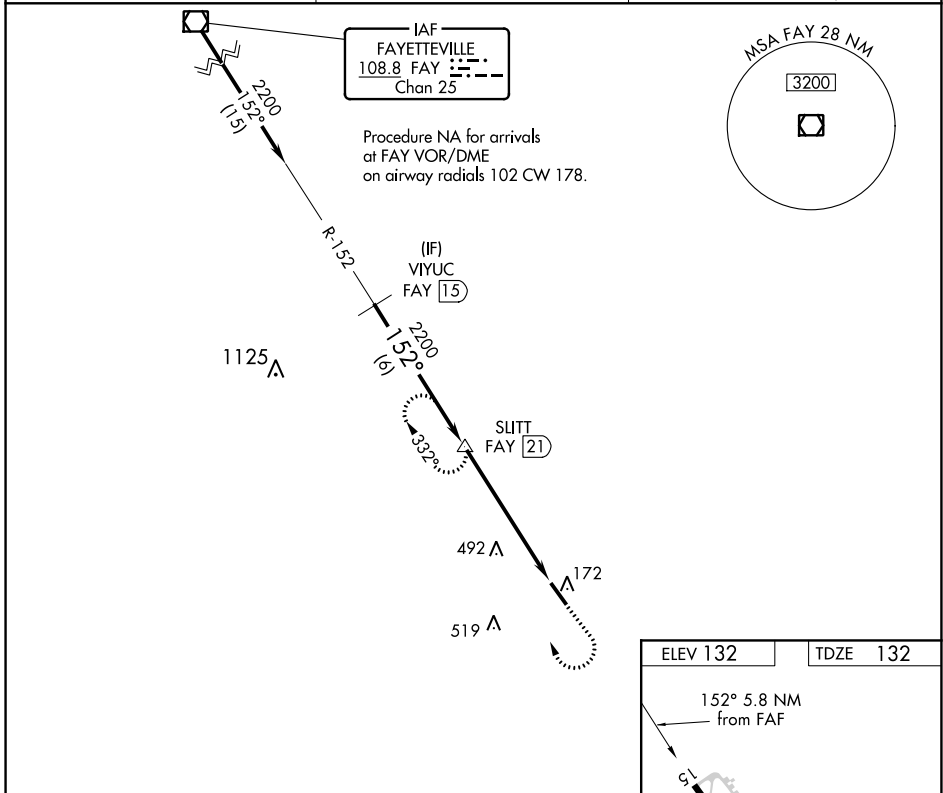
# VOR/DME RWY 15

CURTIS L BROWN JR FIELD (EYF)

**⚠** Visibility reduction by helicopters NA. When local altimeter setting not received, use Fayetteville altimeter setting and increase all MDA 80 feet and increase S-15 visibility Cats C and D ¼ mile and increase Circling visibility Cat C ¼ mile and Cat D ½ mile.

**⚠** MISSED APPROACH: Climb to 1000 then climbing right turn to 2200 on FAY R-152 to SLITT/21 DME and hold.

|                           |   |                                 |
|---------------------------|---|---------------------------------|
| AWOS-3P<br><b>119.475</b> | FAYETTEVILLE APP CON<br><b>133.0 290.25</b> | UNICOM<br><b>122.8 (CTAF) 1</b> |
|---------------------------|---|---------------------------------|



|          |  |                        |                        |                      |
|----------|--|------------------------|------------------------|----------------------|
|          | VGSI and RNAV glidepath not coincident (VGSI Angle 3.00/TCH 32). |                        |                        |                      |
|          | VIYUC FAY 15   | SLITT FAY 21           | 1000                   | 2200                 |
|          |  |                        | ↑                      | ↷ FAY R-152          |
|          | 2200   | 2200                   |                        | △ SLITT              |
|          | Procedure Turn NA  |                        |                        |                      |
|          | 6 NM   |                        | 5.8 NM                 |                      |
| CATEGORY | A  | B                      | C                      | D                    |
| S-15     | 760-1<br>628 (700-1)   | 760-1¼<br>628 (700-1¼) | 760-1¾<br>628 (700-1¾) | 760-2<br>628 (700-2) |
| CIRCLING | 760-1<br>628 (700-1)   | 760-1¼<br>628 (700-1¼) | 760-1¾<br>628 (700-1¾) | 800-2<br>668 (700-2) |

SE-2, 25 MAR 2021 to 22 APR 2021

SE-2, 25 MAR 2021 to 22 APR 2021