

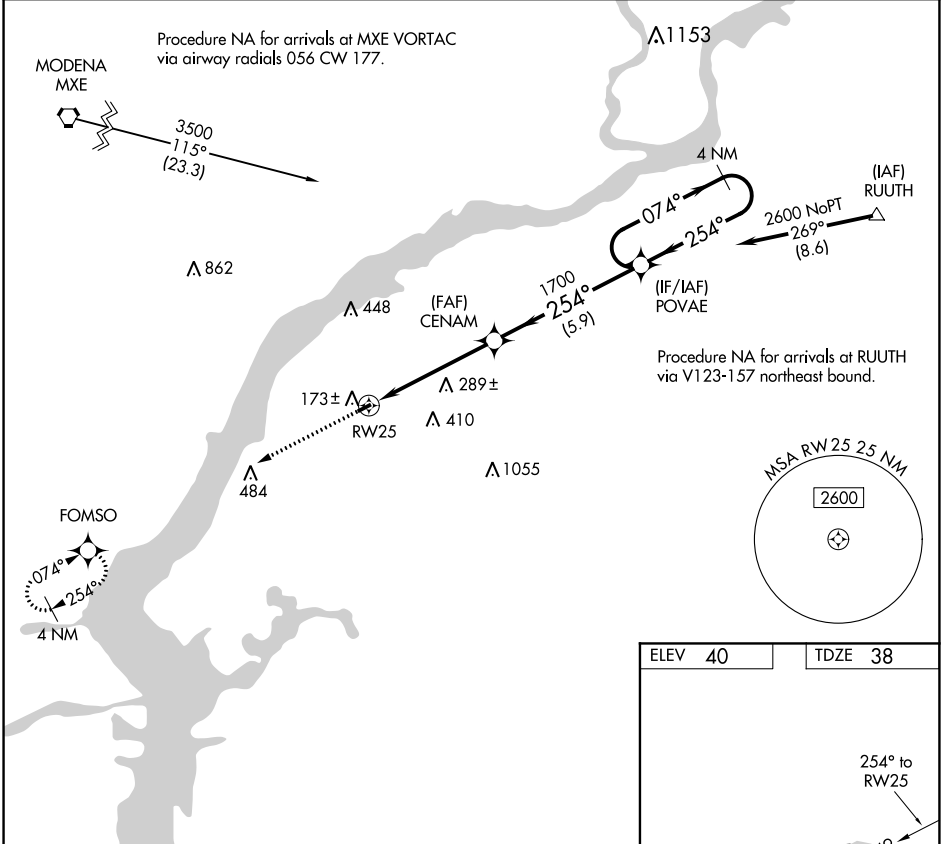
APP CRS	Rwy Idg	<b>2419</b>
<b>254°</b>	TDZE	<b>38</b>
	Apt Elev	<b>40</b>

# RNAV (GPS) RWY 25

SPITFIRE AERODROME (7N7)

RNP APCH.	Use Philadelphia Intl altimeter setting. Procedure NA at night. Rwy 25 helicopter visibility below 1 SM NA.	MISSED APPROACH: Climb to 2600 direct FOMSO and hold.
-----------	--	---

PHL ASOS <b>133.4</b>	PHILADELPHIA APP CON <b>119.75 269.25</b>	UNICOM <b>122.7 (CTAF) 0</b>
--------------------------	--	---------------------------------



NE-2, 25 MAR 2021 to 22 APR 2021

NE-2, 25 MAR 2021 to 22 APR 2021

