

APP CRS  
**305°**

Rwy Idg **3505**  
TDZE **1335**  
Apt Elev **1335**

# RNAV (GPS) RWY 30

OAKES MUNI (2D5)

RNP APCH.

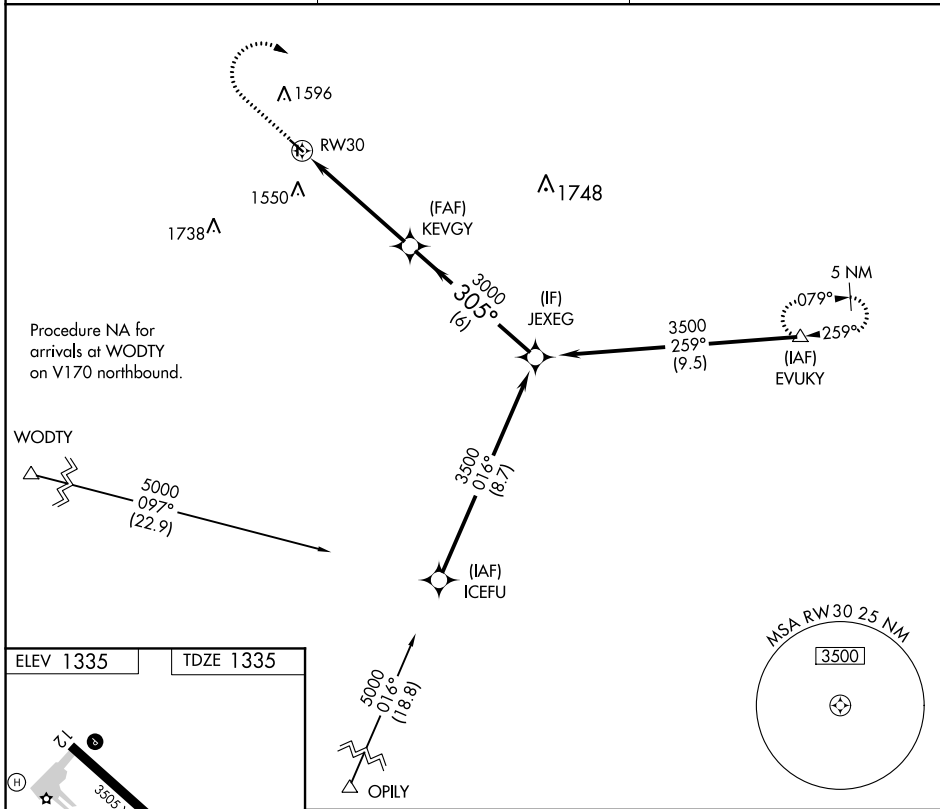
▼ When local altimeter setting not received, use Aberdeen altimeter setting; increase all MDA 120 feet and LNAV and Circling Cat C visibility ¼ mile. Circling Rwy 17, 35 NA. Rwy 30 helicopter visibility reduction below 1 SM NA.

MISSED APPROACH: Climb to 2000 then climbing right turn to 5000 direct EVUKY and hold.

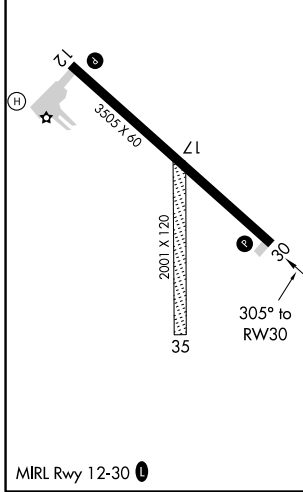
AWOS-3  
**118.675**

MINNEAPOLIS CENTER  
**124.2 270.3**

CTAF  
**122.9**



ELEV 1335 TDZE 1335



2000	5000	EVUKY	△	
RW30		KEVGY	JEXEG	
5.1 NM		6 NM	3500	
305°		3000	Procedure Turn NA	
CATEGORY	A	B	C	D
LNAV MDA	1920-1	585 (600-1)	1920-1¾ 585 (600-1¾)	NA
CIRCLING	1920-1	585 (600-1)	2020-2 685 (700-2)	NA

NC-1, 25 MAR 2021 to 22 APR 2021

NC-1, 25 MAR 2021 to 22 APR 2021