

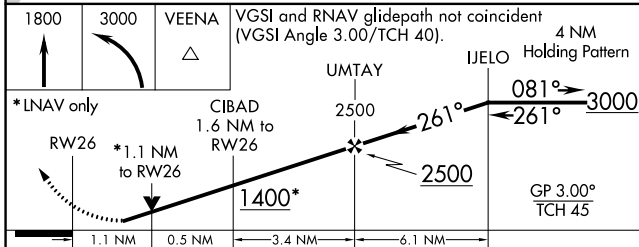
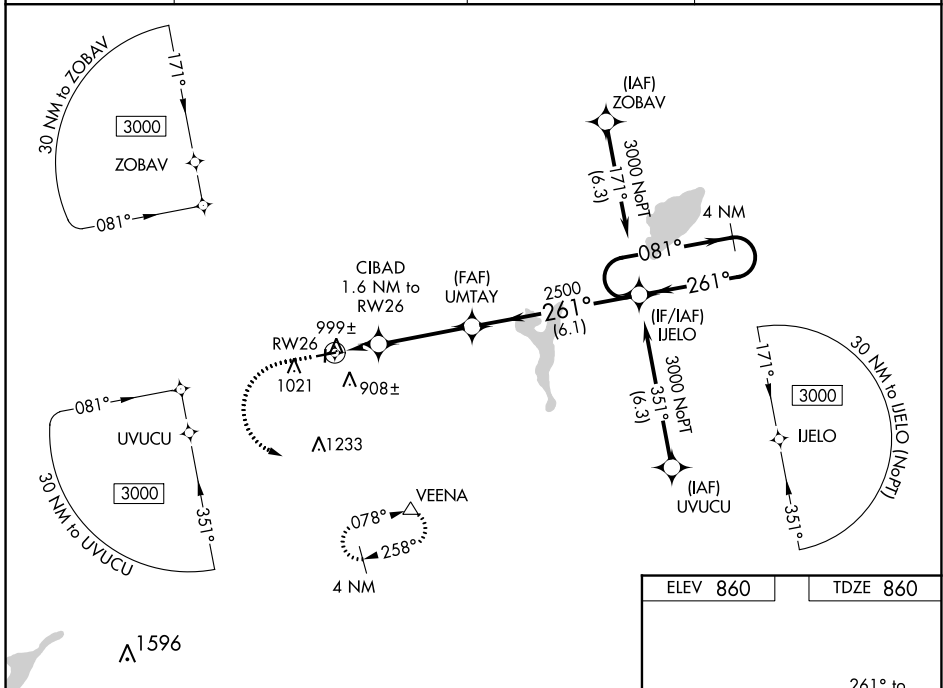
WAAS CH 73023 W26A	APP CRS 261°	Rwy Idg TDZE Apt Elev	3900 860 860
--	------------------------	-----------------------------	---

RNAV (GPS) RWY 26

EAST TROY MUNI (57C)

RNP APCH.	<p>▼ For uncompensated Baro-VNAV systems, LNAV/VNAV NA below -16°C (4°F) or above 54°C (130°F). Obtain local altimeter setting on CTAF; when not received, use General Mitchell Intl altimeter setting and increase all DA 72 feet and all MDA 80 feet, increase LNAV/VNAV visibility all Cats ¼ mile. Rwy 26 helicopter visibility reduction below ¾ SM NA. Baro-VNAV and VDP NA when using General Mitchell Intl altimeter setting.</p>	MISSED APPROACH: Climb to 1800 then climbing left turn to 3000 direct VEENA and hold.
-----------	---	---

AWOS-3PT 118.125	MILWAUKEE APP CON 125.35 307.0	GCO 121.725	UNICOM 123.0 (CTAF) 0
----------------------------	--	-----------------------	--



ELEV 860	TDZE 860
----------	----------

Diagram of RWY 26 showing dimensions (3900 X 75), slope (0.4% UP), and elevation (860). The runway is oriented 261° to RW26. Obstacle data: 81 (0.4% UP), 36 (0.4% UP), 244 X 75.

CATEGORY	A	B	C	D
LPV DA	1110-1	250 (300-1)		NA
LNAV/VNAV DA	1161-1	301 (400-1)		NA
LNAV MDA	1260-1	400 (500-1)		NA

EC-3, 25 MAR 2021 to 22 APR 2021

EC-3, 25 MAR 2021 to 22 APR 2021

MIRL Rwy 8-26 **0**
REIL Rws 8 and 26 **0**