

WAAS CH <b>45725</b> <b>W13A</b>	APP CRS <b>135°</b>	Rwy Idg TDZE Apt Elev	<b>5500</b> <b>804</b> <b>814</b>
--	------------------------	-----------------------------	---

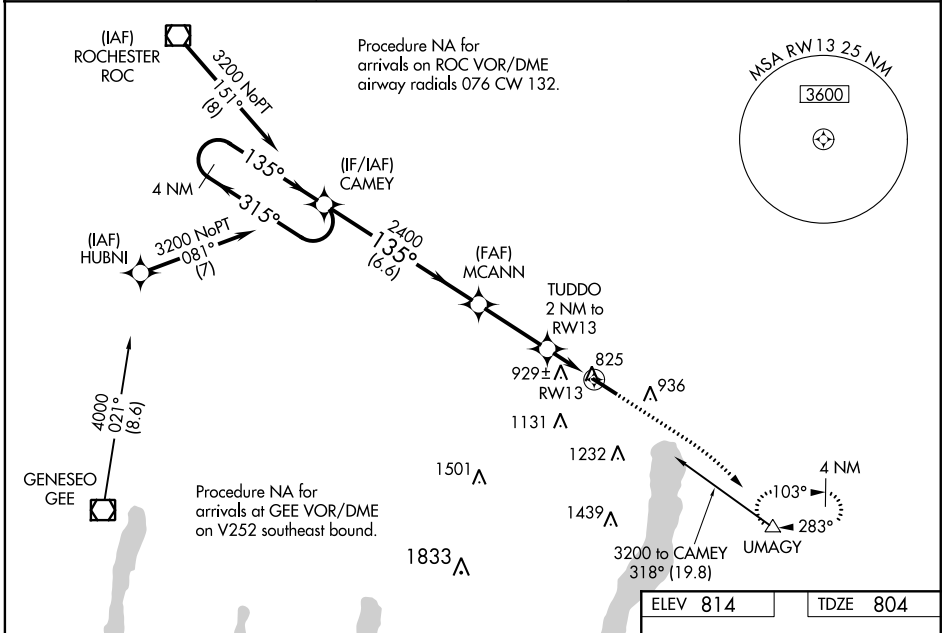
# RNAV (GPS) RWY 13

CANANDAIGUA (IUA)

**NA** DME/DME RNP-0.3 NA. When local altimeter setting not received, use Rochester altimeter setting and increase all DA 82 feet and all MDA 100 feet, increase LPV all Cats visibility 1/4 mile, LNAV/VNAV all Cats visibility 3/8 mile, and LNAV and Circling Cat C visibility 1/4 mile. Rwy 13 helicopter visibility reduction below 3/4 SM NA. Baro-VNAV and VDP NA when using Rochester altimeter setting. For uncompensated Baro-VNAV systems, LNAV/VNAV NA below -16°C (4°F) or above 54°C (130°F).

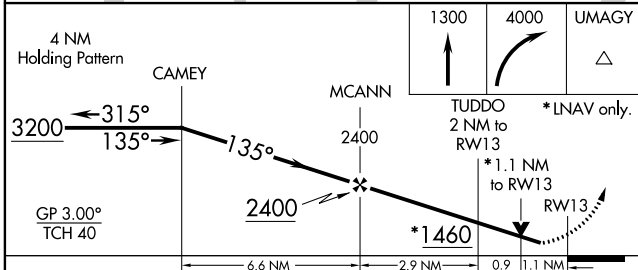
**MISSED APPROACH:** Climb to 1300 then climbing right turn to 4000 direct UMGAY and hold, continue climb-in-hold to 4000.

AWOS-3P <b>118.675</b>	ROCHESTER APP CON <b>119.55 269.6</b>	UNICOM <b>122.8 (CTAF) 0</b>
---------------------------	--	---------------------------------



NE-2, 25 MAR 2021 to 22 APR 2021

NE-2, 25 MAR 2021 to 22 APR 2021



ELEV 814	TDZE 804
----------	----------

CATEGORY	A	B	C	D
LPV DA	1056-7/8	252 (300-7/8)		NA
LNAV/VNAV DA	1251-1 1/2	447 (500-1 1/2)		NA
LNAV MDA	1180-1	376 (400-1)	1180-1 1/8 376 (400-1 1/8)	NA
<b>C</b> CIRCLING	1460-1	646 (700-1)	1540-2 726 (800-2)	NA

