

| | | | |
|--|------------------------|-----------------------------|---|
| WAAS CH 40125 W31A | APP CRS 315° | Rwy Idg TDZE Apt Elev | 5500 814 814 |
|--|------------------------|-----------------------------|---|

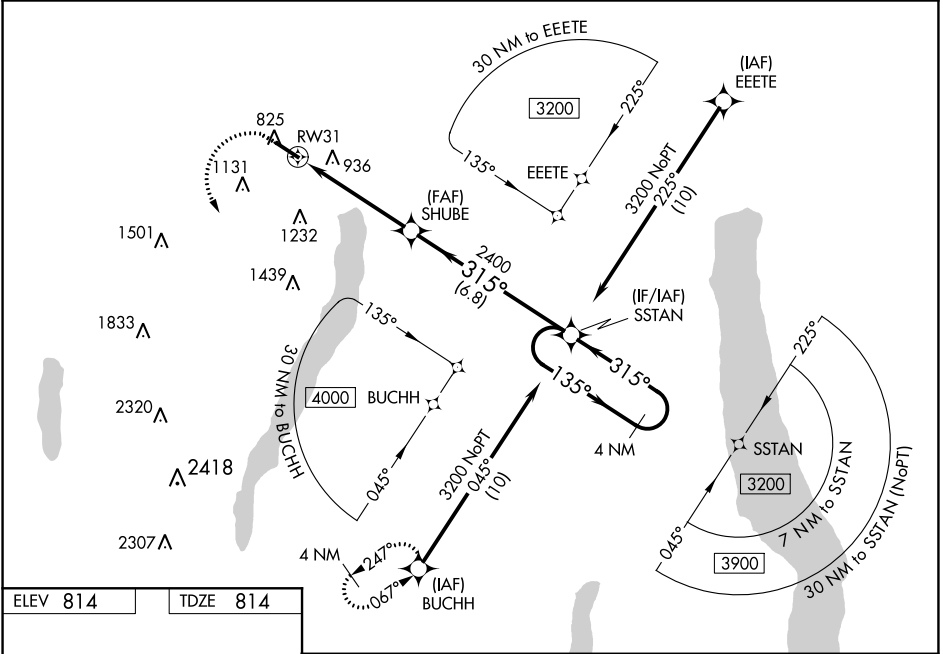
RNAV (GPS) RWY 31

CANANDAIGUA (IUA)

NA For uncompensated Baro-VNAV systems, LNAV/VNAV NA below -16°C (4°F) or above 54°C (130°F).
 DME/DME RNP-0.3 NA. When local altimeter setting not received, use Greater Rochester Intl altimeter setting and increase LPV DA to 1146, LNAV/VNAV DA to 1328 and all MDA 100 feet; increase all Cats visibility LPV to 1½ mile, LNAV/VNAV to 1¾ mile and LNAV Cat C visibility to 1¾ mile and Circling Cat C visibility to 2½ mile. Rwy 31 helicopter visibility reduction below ¾ SM NA. Circling Rwy 13 NA at night. Baro-VNAV and VDP NA when using Greater Rochester altimeter setting.

MISSED APPROACH:
 Climb to 1400 then climbing left turn to 3700 direct BUCHH and hold.

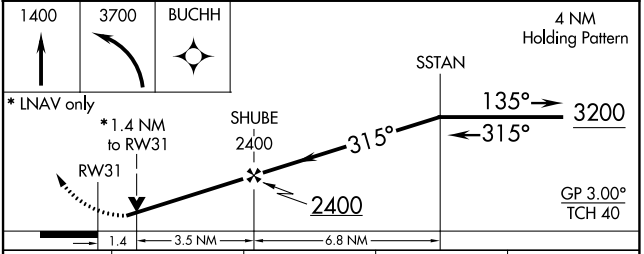
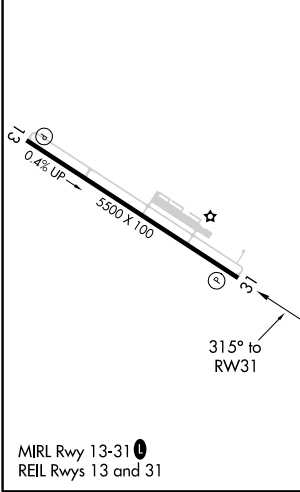
| | | |
|---------------------------|--|---------------------------------|
| AWOS-3P 118.675 | ROCHESTER APP CON 119.55 269.6 | UNICOM 122.8 (CTAF) ① |
|---------------------------|--|---------------------------------|



NE-2, 25 MAR 2021 to 22 APR 2021

NE-2, 25 MAR 2021 to 22 APR 2021

| | |
|-----------------|-----------------|
| ELEV 814 | TDZE 814 |
|-----------------|-----------------|



| CATEGORY | A | B | C | D |
|-------------------|----------|---------------|-------------------------|----|
| LPV DA | 1064-7/8 | 250 (300-7/8) | | NA |
| LNAV/VNAV DA | 1246-1½ | 432 (500-1½) | | NA |
| LNAV MDA | 1300-1 | 486 (500-1) | 1300-1¾ 486 (500-1¾) | NA |
| C CIRCLING | 1460-1 | 646 (700-1) | 1540-2 726 (800-2) | NA |