

WAAS CH <b>45926</b> <b>W03A</b>	APP CRS <b>027°</b>	Rwy Idg TDZE Apt Elev	<b>5003</b> <b>530</b> <b>537</b>
--	------------------------	-----------------------------	---

# RNAV (GPS) RWY 3

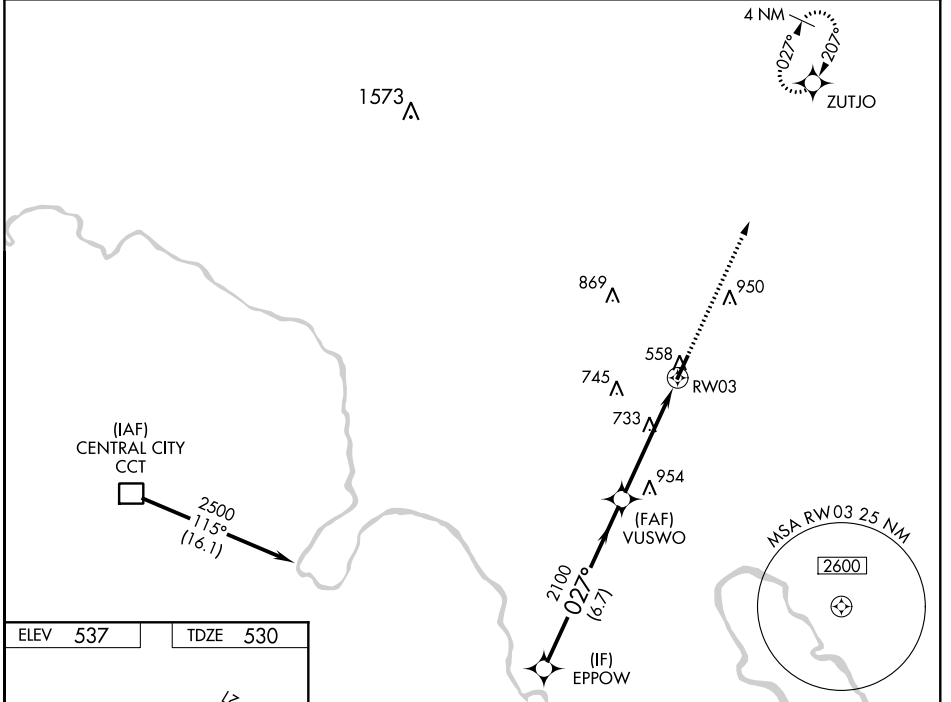
OHIO COUNTY (JQD)

RNP APCH.

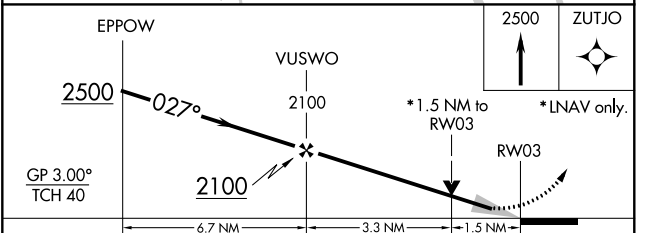
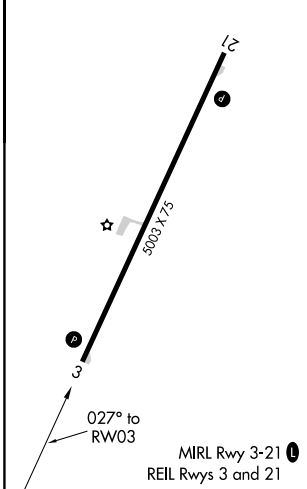
Baro-VNAV and VDP NA when using Owensboro altimeter setting. For uncompensated Baro-VNAV systems, LNAV/VNAV NA below -16°C or above 54°C. When local altimeter setting not received, use Owensboro altimeter setting and increase LPV and LNAV/VNAV DA to 851 feet. Increase all MDA 80 feet and LNAV Cat C visibility  $\frac{3}{8}$  SM and Circling Cat C visibility  $\frac{1}{4}$  SM.

MISSED APPROACH:  
Climb to 2500 direct ZUTJO and hold.

AWOS-3PT <b>132.1</b>	EVANSVILLE APP CON ★ <b>124.025 290.9</b>	UNICOM <b>122.8</b> (CTAF) <b>0</b>
--------------------------	--	--



ELEV 537	TDZE 530
----------	----------



CATEGORY	A	B	C	D
LPV DA		780-1 250 (300-1)		NA
LNAV/VNAV DA		780-1 250 (300-1)		NA
LNAV MDA	1040-1	510 (600-1)	1040-1 $\frac{3}{8}$ 510 (600-1 $\frac{3}{8}$ )	NA
<b>C</b> CIRCLING	1040-1 503 (600-1)	1100-1 563 (600-1)	1300-2 $\frac{1}{4}$ 763 (800-2 $\frac{1}{4}$ )	NA

SE-1, 25 MAR 2021 to 22 APR 2021

SE-1, 25 MAR 2021 to 22 APR 2021