

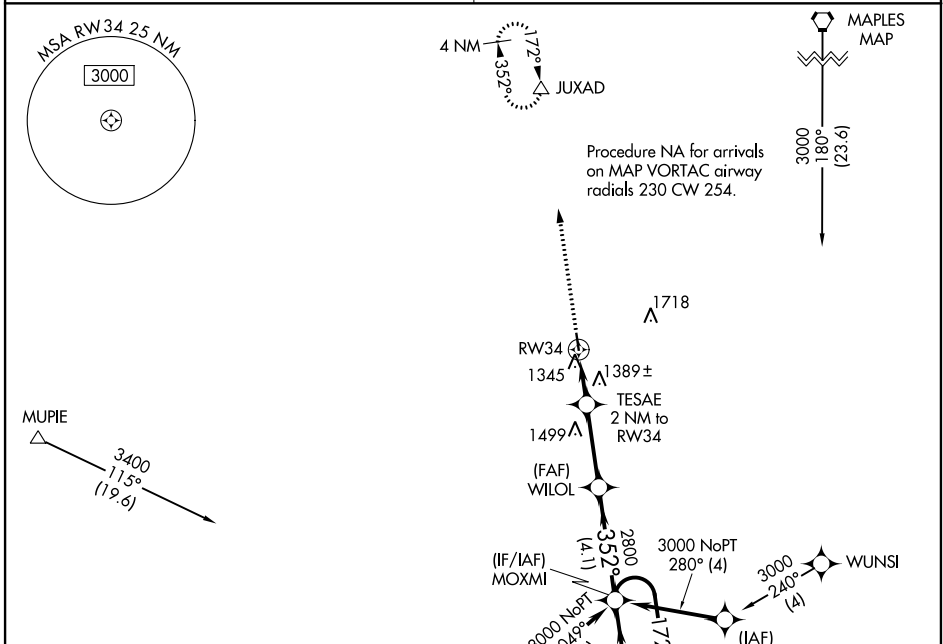
WAAS CH 72728 W34A	APP CRS 352°	Rwy Idg TDZE 1191 Apt Elev 1195
--	------------------------	---

RNAV (GPS) RWY 34

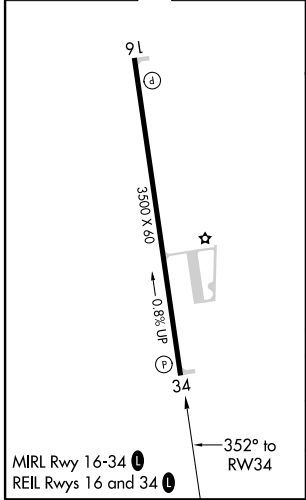
HOUSTON MEMORIAL (M48)

V Baro-VNAV NA. DME/DME RNP-0.3 NA. Use Fort Leonard Wood altimeter setting, when not received use West Plains altimeter setting.
NA MISSED APPROACH: Climb to 3400 direct JUXAD and hold.

KANSAS CITY CENTER 128.35 284.675	CTAF 122.9
---	----------------------



ELEV 1195	TDZE 1191
-----------	-----------



3400 ↑ JUXAD △	VGSI and RNAV glidepath not coincident (VGSI Angle 4.00/TCH 39).	MOXMI 4 NM Holding Pattern		
*LNAV only	TESAE 2 NM to RW34	WILOL 2800		
	1840*	352° 2800		
	← 2 NM →	← 3 NM →		
		← 4.1 NM →		
		172° → 3000		
		← 352°		
		GP 3.00° TCH 40		
CATEGORY	A	B	C	D
LPV DA	1509-1½	318 (400-1½)		NA
LNAV/VNAV DA	1807-2¼	616 (700-2¼)		NA
LNAV MDA	1720-1	529 (600-1)		NA
CIRCLING	1740-1 545 (600-1)	1760-1 565 (600-1)		NA

NC-3, 25 MAR 2021 to 22 APR 2021

NC-3, 25 MAR 2021 to 22 APR 2021