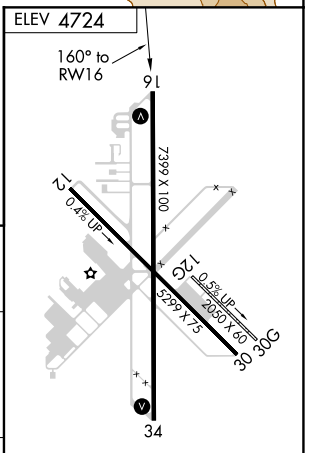
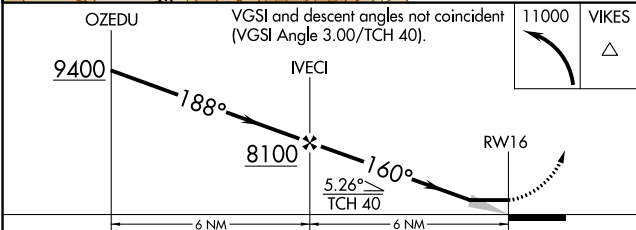
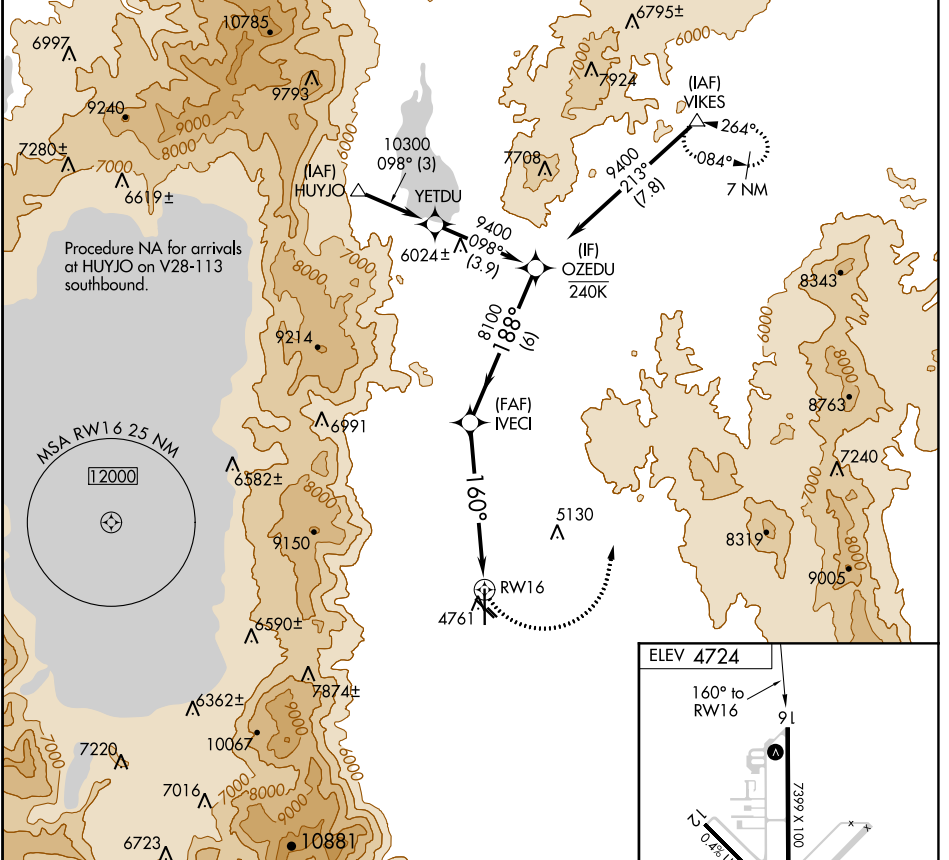


APP CRS 160°	Rwy Idg TDZE Apt Elev	N/A N/A 4724
------------------------	-----------------------------	---

RNAV (GPS)-A

MINDEN-TAHOE (MEV)

RNP APCH.		MISSED APPROACH: Climbing left turn to 11000 direct VIKES and hold, continue climb-in-hold to 11000.	
<p>▼ Circling NA for Cat D southwest of Rws 12 and 34. ▲ Circling Rwy 12L, 30R NA at night.</p>			
AWOS-3PT 119.325	NORCAL APP CON 119.2 279.55	CLNC DEL 133.25	UNICOM 123.05 (CTAF) 0



CATEGORY	A	B	C	D
C CIRCLING	6600-1¼ 1876 (1900-1¼)	6600-1½ 1876 (1900-1½)	6600-3	1876 (1900-3)

HIRL Rwy 16-34 0

SW-4, 25 MAR 2021 to 22 APR 2021

SW-4, 25 MAR 2021 to 22 APR 2021