

WAAS CH 78341 W16A	APP CRS 159°	Rwy Idg 3102 TDZE 541 Apt Elev 541
---------------------------------	------------------------	---

RNAV (GPS) RWY 16

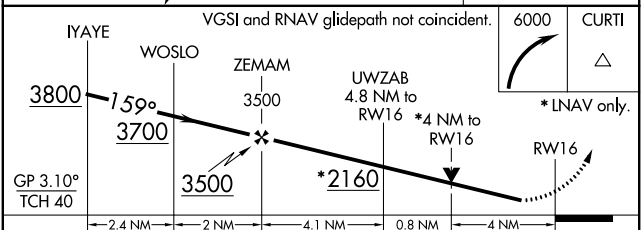
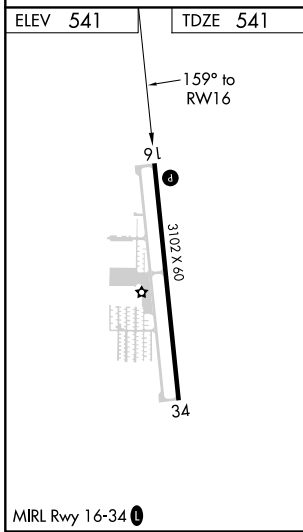
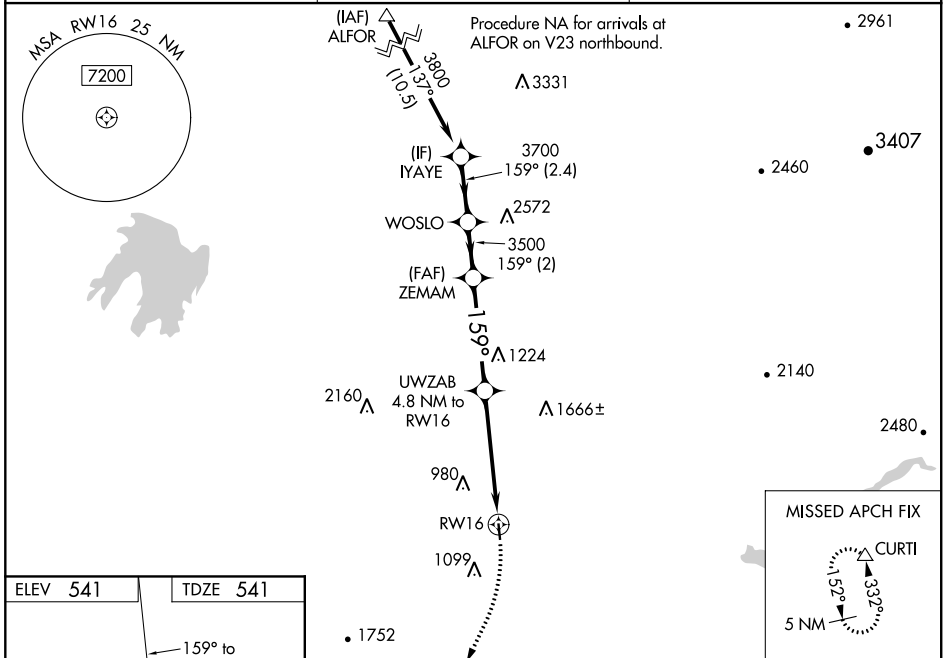
HOBBY FIELD (77S)

RNP APCH.

NA For uncompensated Baro-VNAV systems, LNAV/VNAV NA below -16°C or above 54°C. Circling Rwy 34 NA at night. When local altimeter setting not received, use Eugene altimeter setting and increase LPV DA to 1102 feet and all LPV visibilities ¼ SM, and increase LNAV/VNAV DA to 1474; increase all MDAs 80 feet. Baro-VNAV and VDP NA when using Eugene altimeter setting. Rwy 16 helicopter visibility reduction below ¼ SM NA.

MISSED APPROACH: Climbing right turn to 6000 direct CURTI and hold, continue climb-in-hold to 6000.

AWOS-3 119.275	CASCADE APP CON * 119.6	UNICOM 122.7 (CTAF) 0
--------------------------	-----------------------------------	---------------------------------



CATEGORY	A	B	C	D
LPV DA	1041-1⅜ 500 (500-1⅜)			
LNAV/VNAV DA	1413-2½ 872 (900-2½)			
LNAV MDA	1820-1¼ 1279 (1300-1¼)	1820-1½ 1279 (1300-1½)	1820-3 1279 (1300-3)	1279 (1300-3)
C CIRCLING	1820-1¼ 1279 (1300-1¼)	1820-1½ 1279 (1300-1½)	2260-3 1719 (1800-3)	2740-3 2199 (2200-3)

NW-1, 25 MAR 2021 to 22 APR 2021

NW-1, 25 MAR 2021 to 22 APR 2021