

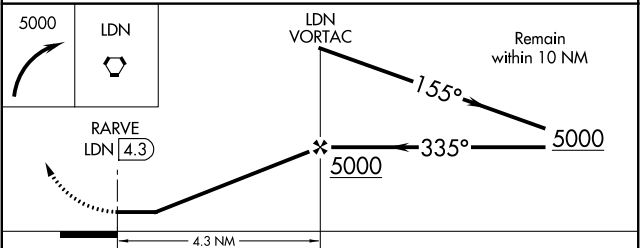
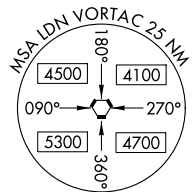
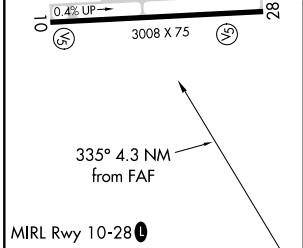
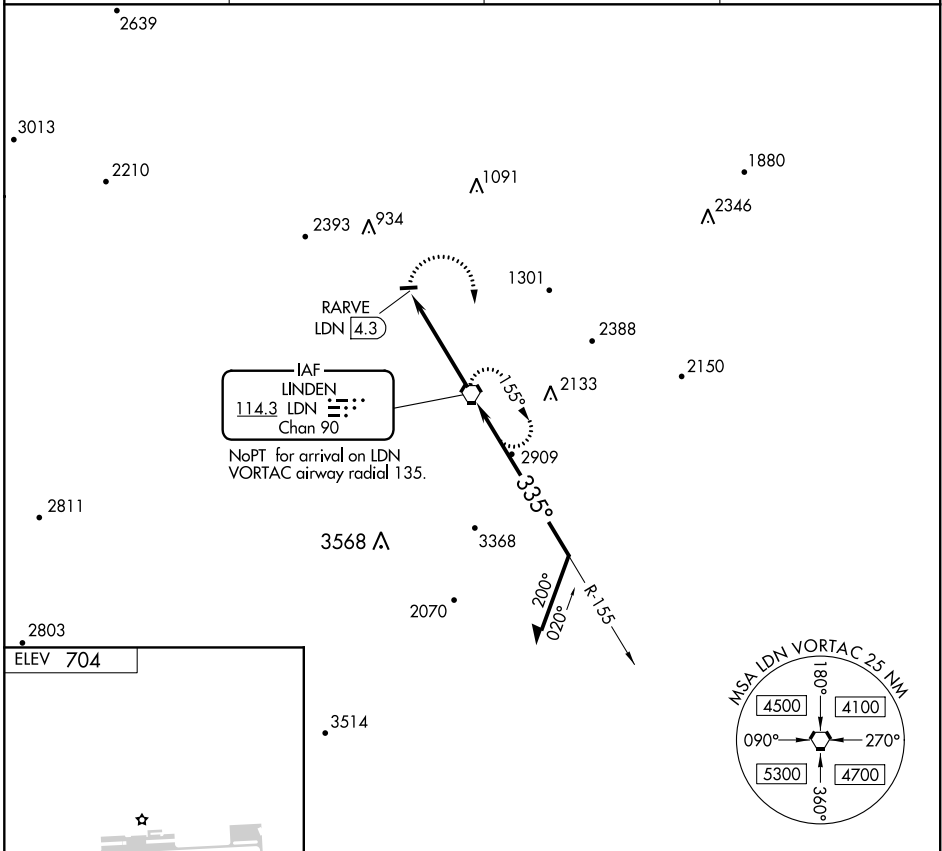
VORTAC LDN 114.3 Chan 90	APP CRS 335°	Rwy Idg TDZE Apt Elev	N/A N/A 704
--	------------------------	-----------------------------	--

VOR-B

FRONT ROYAL-WARREN COUNTY (F'R.R)

NA	Procedure NA at night. Helicopter visibility reduction below 1 SM NA. When local altimeter setting not received, use Winchester altimeter setting and increase all MDA 40 feet.	MISSED APPROACH: Climbing right turn to 5000 direct LDN VORTAC and hold, continue climb-in-hold to 5000.
-----------	---	--

AWOS-3 121.85	OKV AWOS-3 124.85	POTOMAC APP CON 120.45	UNICOM 123.0 (CTAF) 0
-------------------------	-----------------------------	----------------------------------	--



FAF to MAP 4.3 NM						
Knots	60	90	120	150	180	
Min:Sec	4:18	2:52	2:09	1:43	1:26	
CATEGORY	A		B		C	D
CIRCLING	3300-1¼ 2596 (2600-1¼)		3300-1½ 2596 (2600-1½)		NA	

VOR-B

NE-3, 25 MAR 2021 to 22 APR 2021

NE-3, 25 MAR 2021 to 22 APR 2021