

LOC/DME I-PUJ 109.15 Chan 28 (Y)	APP CRS 311°	Rwy Idg TDZE Apt Elev	5505 1283 1289
---	------------------------	-----------------------------	---

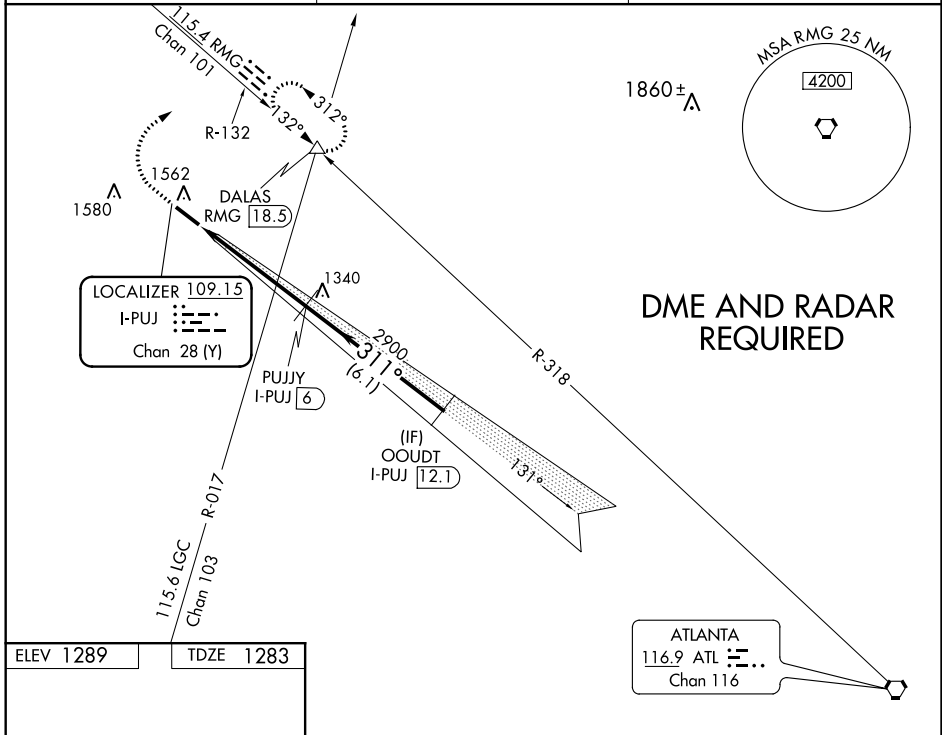
ILS or LOC/DME RWY 31

PAULDING NORTHWEST ATLANTA (PUJ)

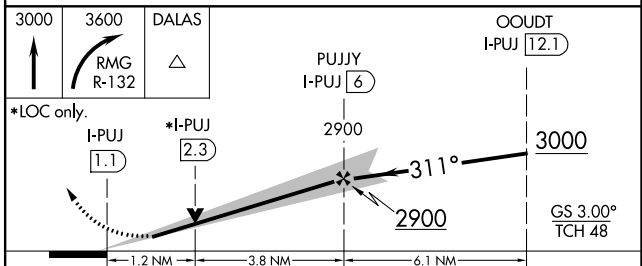
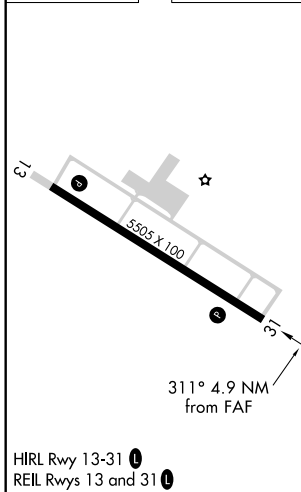
NA VDP NA with Cartersville altimeter setting. When local altimeter setting not received, use Cartersville altimeter setting and increase all DA 106 feet and all MDA 120 feet and S-ILS 31 all Cats visibility ¼ mile and S-LOC 31 Cat C/D and Circling Cat C/D visibilities ½ mile. Autopilot coupled approach NA below 1680.

MISSED APPROACH: Climb to 3000 then climbing right turn to 3600 on RMG VORTAC R-132 to DALAS INT/RMG 18.5 DME and hold.

AWOS-3 126.225	ATLANTA APP CON 121.0 268.7	UNICOM 123.075 (CTAF) 0
--------------------------	---------------------------------------	--



ELEV 1289	TDZE 1283
-----------	-----------



CATEGORY	A	B	C	D
S-ILS 31	1483-¾ 200 (200-¾)			
S-LOC 31	1680-1 397 (400-1)		1680-1¼ 397 (400-1¼)	
CIRCLING	1880-1 591 (600-1)		1880-1½ 591 (600-1½) 1940-2 651 (700-2)	

SE-4, 25 MAR 2021 to 22 APR 2021

SE-4, 25 MAR 2021 to 22 APR 2021