

| | | |
|--|------------------------|--|
| WAAS CH 99720 W13A | APP CRS 131° | Rwy Idg 5505 TDZE 1289 Apt Elev 1289 |
|--|------------------------|--|

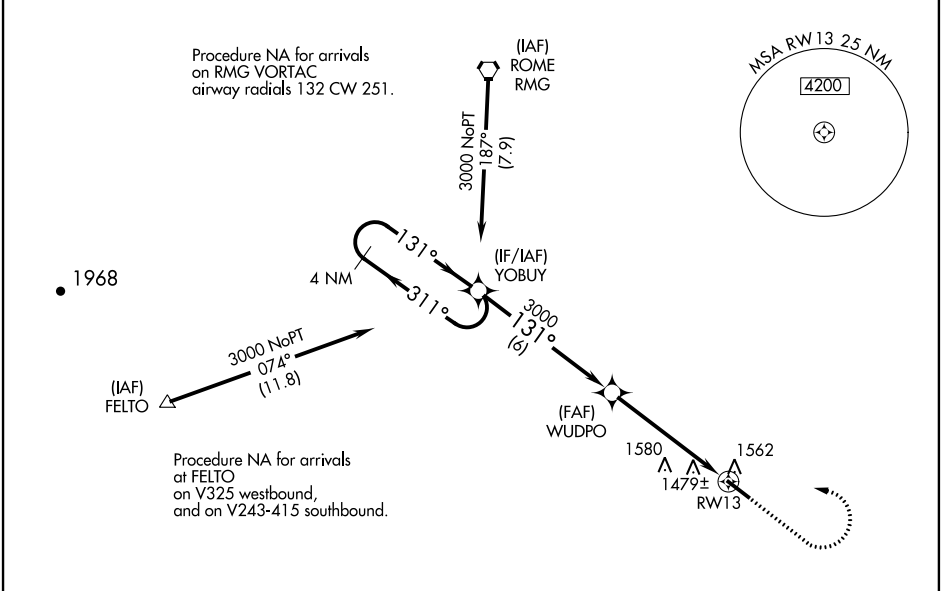
RNAV (GPS) RWY 13

PAULDING NORTHWEST ATLANTA (PUJ)

NA Baro-VNAV NA when using Cartersville altimeter setting. For uncompensated Baro-VNAV systems, LNAV/VNAV NA below -17°C (2°F) or above 35°C (95°F). DME/DME RNP-0.3 NA. When local altimeter setting not received, use Cartersville altimeter setting and increase all DA 106 feet and all MDA 120 feet; increase LPV all Cats and LNAV Cats C/D visibilities 3/8 mile, increase LNAV/VNAV all Cats and Circling Cats C/D visibilities 1/2 mile. VDP NA with Cartersville altimeter setting.

MISSED APPROACH: Climb to 1700 then climbing left turn to 3000 direct YOBUY and hold.

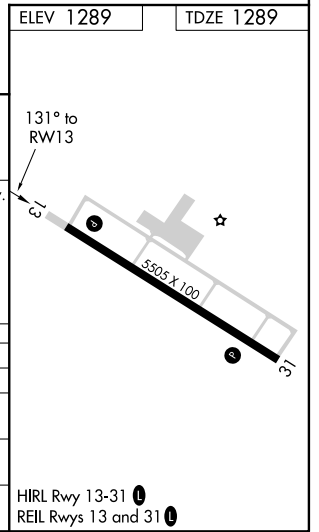
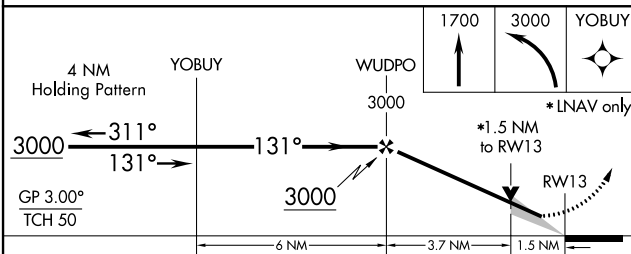
| | | |
|--------------------------|---------------------------------------|---------------------------------|
| AWOS-3 126,225 | ATLANTA APP CON 121.0 268.7 | UNICOM 123,075 (CTAF) |
|--------------------------|---------------------------------------|---------------------------------|



SE-4, 25 MAR 2021 to 22 APR 2021

SE-4, 25 MAR 2021 to 22 APR 2021

| | |
|-----------|-----------|
| ELEV 1289 | TDZE 1289 |
|-----------|-----------|



| CATEGORY | A | B | C | D |
|--------------|--------|-------------|-------------------------------|-----------------------|
| LPV DA | | 1539-3/4 | 250 (300-3/4) | |
| LNAV/VNAV DA | | 1797-13/4 | 508 (600-13/4) | |
| LNAV MDA | 1820-1 | 531 (600-1) | 1820-1 1/2 | 531 (600-1 1/2) |
| CIRCLING | 1880-1 | 591 (600-1) | 1880-1 1/2 591 (600-1 1/2) | 1940-2 651 (700-2) |