

WAAS CH 99511 W31A	APP CRS 311°	Rwy Idg TDZE Apt Elev	5505 1283 1289
--	------------------------	-----------------------------	---

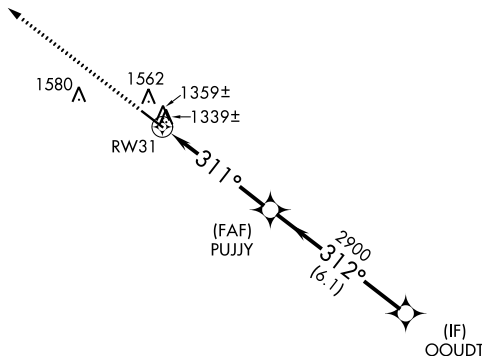
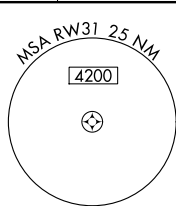
RNAV (GPS) RWY 31
PAULDING NORTHWEST ATLANTA (PUJ)

⚠ For uncompensated Baro-VNAV systems, LNAV/VNAV NA below -17°C (2°F) or above 46°C (114°F). DME/DME RNP-0.3 NA. When local altimeter setting not received, use Cartersville altimeter setting and increase all DA 106 feet and all MDA 120 feet and LPV all Cats and LNAV/VNAV all Cats and LNAV Cat C/D visibilities ½ mile and Circling Cat C/D visibilities ½ mile. Baro-VNAV and VDP NA when using Cartersville altimeter setting.

MISSED APPROACH:
Climb to 3000 direct YOBUY and hold.

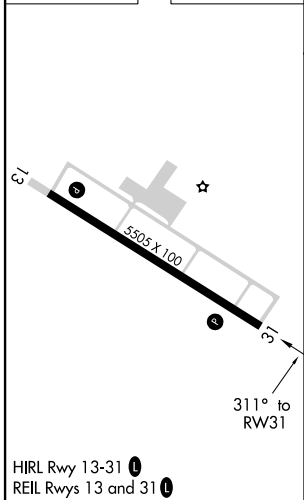
AWOS-3 126.225	ATLANTA APP CON 121.0 268.7	UNICOM 123.075 (CTAF)
--------------------------	---------------------------------------	---------------------------------

RADAR REQUIRED

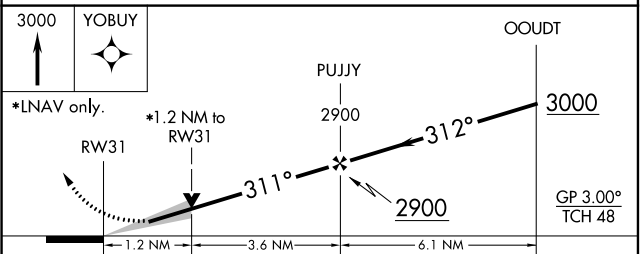


△ 1769

ELEV 1289	TDZE 1283
-----------	-----------



HIRL Rwy 13-31
REIL Rwy 13 and 31



CATEGORY	A	B	C	D
LPV DA	1483- ³ / ₄ 200 (200- ³ / ₄)			
LNAV/VNAV DA	1635-1 ¹ / ₄ 352 (400-1 ¹ / ₄)			
LNAV MDA	1720-1	437 (500-1)	1720-1 ¹ / ₄ 437 (500-1 ¹ / ₄)	1720-1 ¹ / ₂ 437 (500-1 ¹ / ₂)
CIRCLING	1880-1	591 (600-1)	1880-1 ¹ / ₂ 591 (600-1 ¹ / ₂)	1940-2 651 (700-2)

SE-4, 25 MAR 2021 to 22 APR 2021

SE-4, 25 MAR 2021 to 22 APR 2021