

WAAS CH <b>42917</b> <b>W04A</b>	APP CRS <b>041°</b>	Rwy Idg TDZE Apt Elev	<b>5040</b> <b>4956</b> <b>4985</b>
--	------------------------	-----------------------------	---

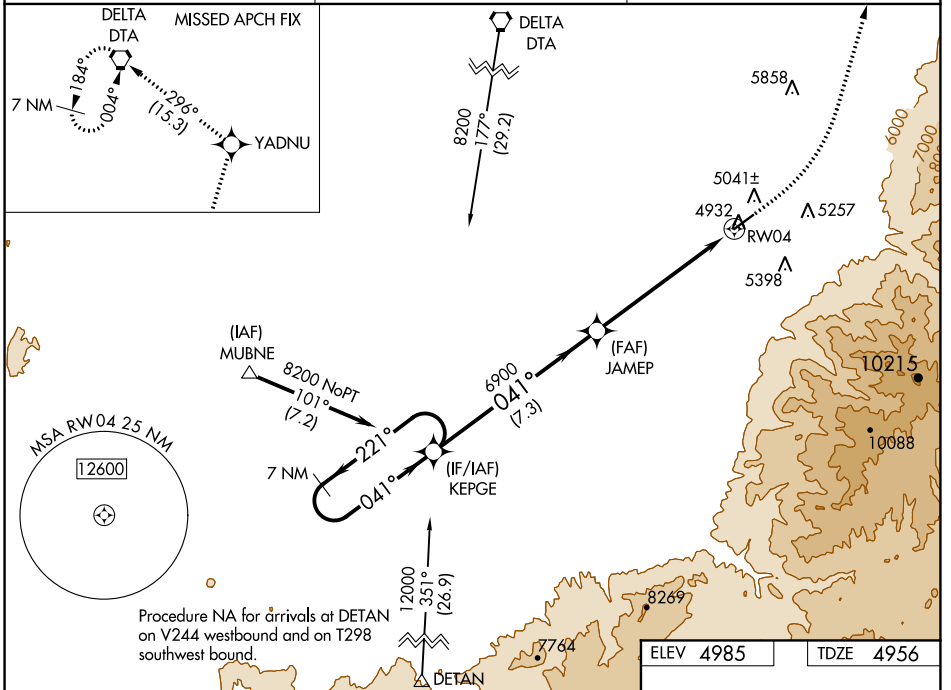
# RNAV (GPS) RWY 4

FILLMORE MUNI (FOM)

**NA** For uncompensated Baro-VNAV systems, LNAV/VNAV NA below -24°C (-11°F) or above 54°C (130°F). DME/DME RNP-0.3 NA.

MISSED APPROACH: Climb to 5500 then climbing left turn to 9600 direct YADNU and on track 296° to DTA VORTAC and hold.

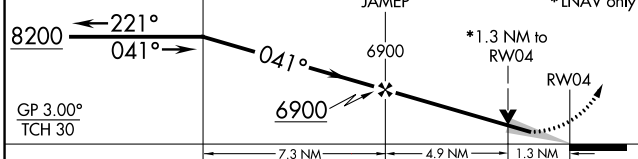
AWOS-3 <b>133.775</b>	SALT LAKE CITY CENTER <b>125.575 379.275</b>	UNICOM <b>122.8 (CTAF) 0</b>
--------------------------	---	---------------------------------



SW-4, 25 MAR 2021 to 22 APR 2021

SW-4, 25 MAR 2021 to 22 APR 2021

7 NM Holding Pattern	KEPGE	5500	9600	YADNU	tr 296°	DTA
	JAMEP	↑	↶	✦		⬠
						* LNAV only



CATEGORY	A	B	C	D
LPV DA	5206-1 250 (300-1)			NA
LNAV/VNAV DA	5301-1 3/8 345 (400-1 3/8)			NA
LNAV MDA	5360-1 404 (400-1)		5360-1 1/8 404 (400-1 1/8)	NA
CIRCLING	5620-1 635 (700-1)		6200-3 1215 (1300-3)	NA

ELEV 4985 TDZE 4956

5040 X 75  
1.4% UP

041° to RWY 4

REIL Rwy 4 and 22 0  
MIRL Rwy 4-22 0