

WAAS CH <b>81840</b> <b>W18A</b>	APP CRS <b>178°</b>	Rwy ldg <b>4228</b> TDZE <b>779</b> Apt Elev <b>783</b>
--	------------------------	---

# RNAV (GPS) RWY 18

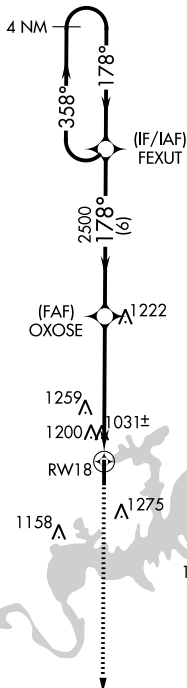
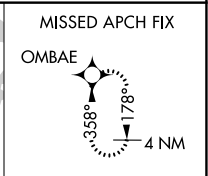
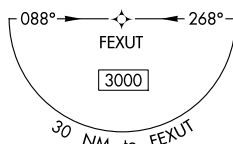
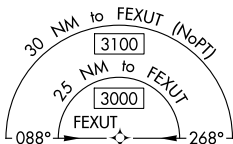
SOUTH GRAND LAKE RGNL (1K8)

RNP APCH.

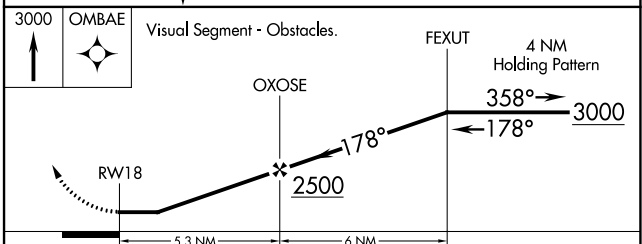
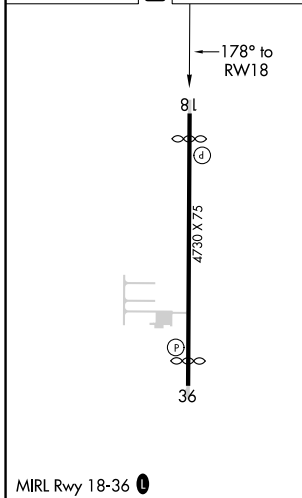
**▼** Rwy 18 helicopter visibility reduction below 1 SM NA. Use Grove altimeter setting; when not received, use Claremore altimeter setting; increase all MDA 40 feet, LP Cat C visibility 1/8 mile, LNAV Cat B visibility 1/4 mile and Cat C 1/2 mile. Straight-in Rwy 18 NA at night, Circling Rwy 18 NA at night.

**▲NA** MISSED APPROACH: Climb to 3000 direct OMBAE and hold.

GMJ AWOS-3 <b>119.025</b>	KANSAS CITY CENTER <b>128.6 282.325</b>	CTAF <b>122.9</b>
------------------------------	--	----------------------



ELEV 783	<b>D</b>	TDZE 779
----------	----------	----------



CATEGORY	A	B	C	D
LP MDA	1320-1	541 (600-1)	1320-1 5/8 541 (600-1 5/8)	NA
LNAV MDA	1500-1	721 (800-1)	1500-2 721 (800-2)	NA
<b>C</b> CIRCLING	1540-1 757 (800-1)	1620-1 1/4 837 (900-1 1/4)	1620-2 1/2 837 (900-2 1/2)	NA

SC-1, 25 MAR 2021 to 22 APR 2021

SC-1, 25 MAR 2021 to 22 APR 2021