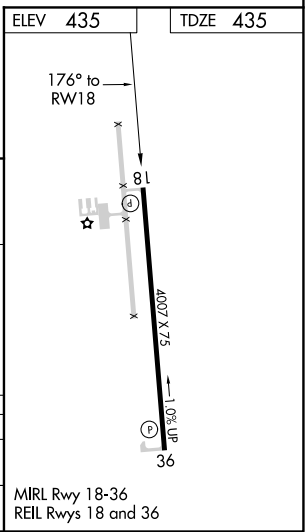
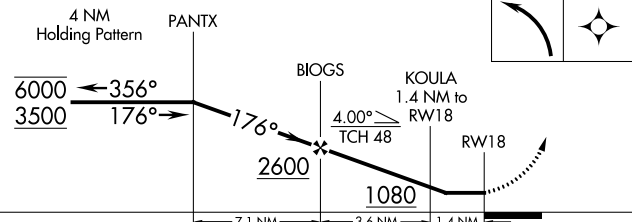
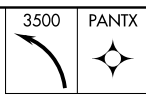
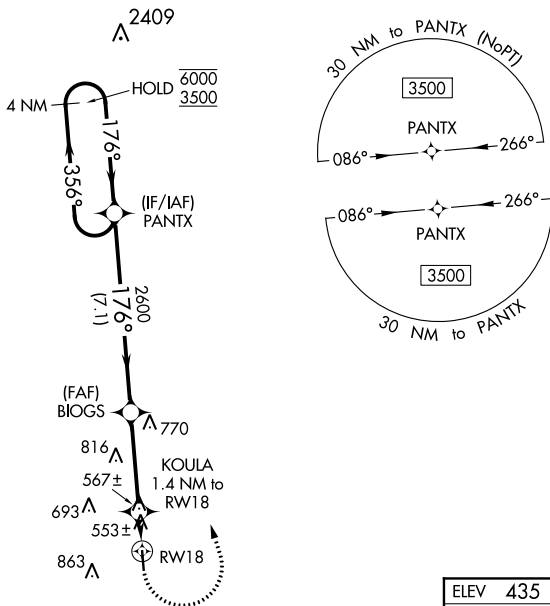


APP CRS	Rwy Idg	4007
176°	TDZE	435
	Apt Elev	435

RNAV (GPS) RWY 18

COPIAH COUNTY (M11)

RNP APCH.		MISSED APPROACH: Climbing left turn to 3500 direct PANTX and hold, continue climb-in-hold to 3500.
<p>⚠ Rwy 18 helicopter visibility reduction below 1 SM NA. Use Brookhaven altimeter setting, when not received, use Hawkins Field altimeter setting and increase all MDA 40 feet. Straight-in Rwy 18 NA at night, Circling Rwy 18 NA at night.</p>		
1R7 AWOS-3P 118.125	MEMPHIS CENTER 132.5 259.1	CTAF 122.9



CATEGORY	A	B	C	D
LNAV MDA	860-1	425 (500-1)	NA	
C CIRCLING	940-1 505 (600-1)	1140-1 705 (800-1)	NA	

MIRL Rwy 18-36
REIL Rwy 18 and 36

SC-4, 25 MAR 2021 to 22 APR 2021

SC-4, 25 MAR 2021 to 22 APR 2021