

WAAS CH 53542 W36A	APP CRS 356°	Rwy Idg 4007 TDZE 430 Apt Elev 435
--	------------------------	---

RNAV (GPS) RWY 36

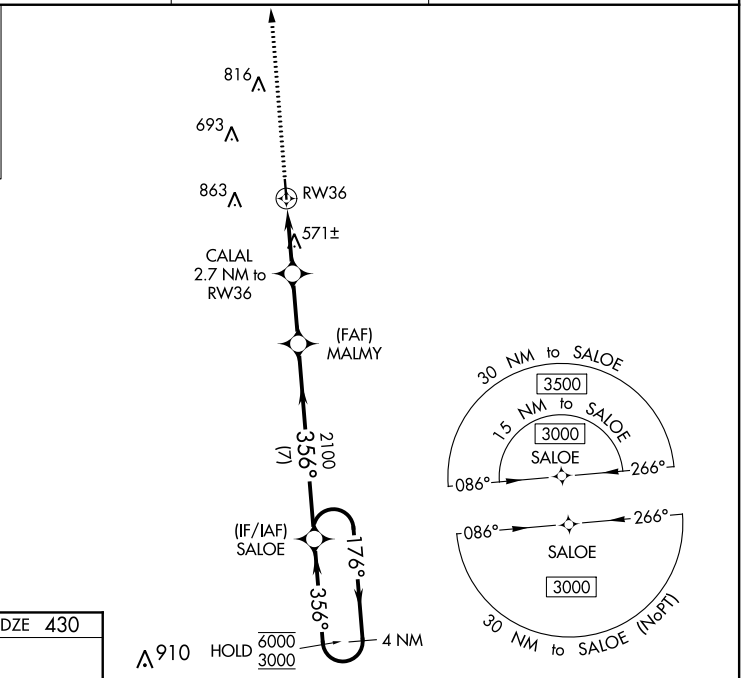
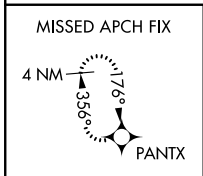
COPIAH COUNTY (M11)

RNP APCH.

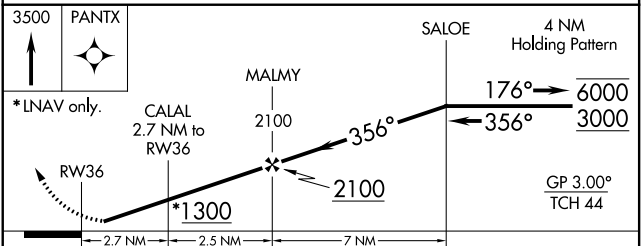
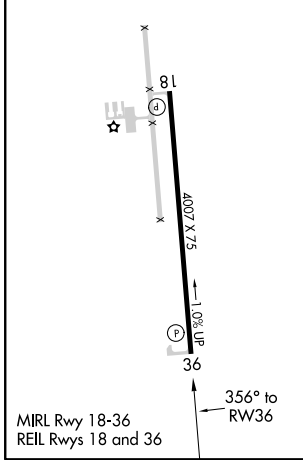
NA Circling Rwy 18 NA at night. Rwy 36 helicopter visibility reduction below 3/4 SM NA. Baro-VNAV NA. Use Brookhaven altimeter setting, when not received, use Hawkins Field altimeter setting and increase LPV DA to 766, LNAV/VNAV DA to 806 and all MDA 40 feet, and increase Circling Cat C/D visibility 1/4 SM.

MISSED APPROACH: Climb to 3500 direct PANTX and hold, continue climb-in-hold to 3500.

1R7 AWOS-3P 118.125	MEMPHIS CENTER 132.5 259.1	CTAF 122.9
-------------------------------	--------------------------------------	----------------------



ELEV 435	TDZE 430
----------	----------



CATEGORY	A	B	C	D
LPV DA		730-1	300 (300-1)	
LNAV/VNAV DA		782-1	352 (400-1)	
LNAV MDA	880-1	450 (500-1)	880-1 ³ / ₈	450 (500-1 ³ / ₈)
CIRCLING	940-1 505 (600-1)	1140-1 705 (800-1)	1280-2 ¹ / ₂ 845 (900-2 ¹ / ₂)	1280-2 ³ / ₄ 845 (900-2 ³ / ₄)

SC-4, 25 MAR 2021 to 22 APR 2021

SC-4, 25 MAR 2021 to 22 APR 2021