

SUMMIT (UMM)(PAST) 0 N UTC-9(-8DT) N63°19.86' W149°07.73'
2409 NOTAM FILE ENA
RWY 03-21: 3814X80 (GRVL)

RWY 03: Brush.

RWY 21: Brush.

AIRPORT REMARKS: Unattended. Recommend visual inspection prior to landing. No winter maintenance. Rwy subject to crosswinds. Rwy 03-21 brush up to 4 ft high growing on rwy surface.

AIRPORT MANAGER: 907-451-5280

COMMUNICATIONS: CTAF 122.9

RADIO AIDS TO NAVIGATION: NOTAM FILE TKA.

TALKEETNA (H) VORW/DME 116.2 TKA Chan 109 N62°17.90'
W150°06.32' 004° 67.7 NM to fld. 568/19E.

VOR unusable:

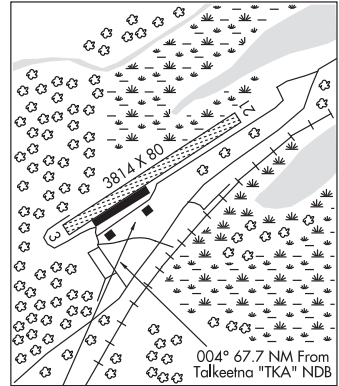
277°-297° byd 30 NM blo 12,000'

DME unusable:

057°-087° byd 30 NM blo 13,000'

COMM/NAV/WEATHER REMARKS: VHF communication unreliable 15 NM north at MEA due to terrain. For a toll free call to Kenai FSS dial 1-866-864-1737.

ANCHORAGE
L-30



SUMMIT LAKE SPB (See MOOSE PASS on page 178)

SUMNER STRAIT N56°27.87' W133°05.84' NOTAM FILE SIT.
NDB (HW) 529 SQM 23/20E.

JUNEAU
H-1C, L-1C

SUNNY HAY MOUNTAIN N55°27.73' W133°04.85'
RCO—120.9 (KETCHIKAN FSS)

KETCHIKAN
L-1C

SWIFT CREEK (See MCCARTHY on page 171)

TAHNETA PASS N61°53.97' W147°18.13'
RCO—122.4 (KENAI FSS)

ANCHORAGE
L-1A, 3D

TAKOTNA (TCT)(PPCT) 1 E UTC-9(-8DT) N62°59.58' W156°01.78'
423 B NOTAM FILE ENA
RWY 04-22: 3300X60 (GRVL) MIRL

SERVICE: LGT ACTIVATE MIRL Rwy 04-22 and rotating bcn—CTAF.

AIRPORT REMARKS: Unattended. Rwy condition not monitored, recommend visual inspection before using. Rwy 04-22 multiple lateral cracks full length and width of rwy. Uneven surface, dips, heaves and humps full length and width of rwy. Rwy 04-22 NSTD mkgs: Rwy mkd with reflective cones and markers.

AIRPORT MANAGER: 907-524-3241

COMMUNICATIONS: CTAF 122.9

RADIO AIDS TO NAVIGATION: NOTAM FILE MCG.

MC GRATH (H) VORTACW 115.5 MCG Chan 102 N62°57.06'
W155°36.68' 264° 11.7 NM to fld. 344/19E.

VOR DME & TACAN AZIMUTH unusable:

014°-019° byd 19 NM blo 7,000'

040°-050° byd 21 NM blo 5,000'

144°-194° byd 6 NM blo 9,000'

195°-223° byd 28 NM blo 6,000'

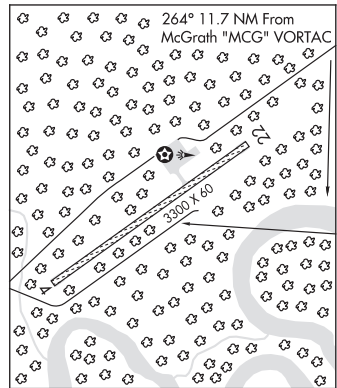
224°-261° byd 12 NM blo 10,000'

262°-294° byd 25 NM blo 7,000'

295°-314° byd 21 NM blo 8,000'

COMM/NAV/WEATHER REMARKS: For a toll free call to Kenai FSS dial 1-866-864-1737.

MC GRATH
L-3C



TAKOTNA RIVER N62°56.81' W155°33.44' NOTAM FILE MCG.
NDB (HW) 350 VTR 269° 1.4 NM to Mc Grath. 341/16E.

MC GRATH
H-1B, 2I, L-3C