

**COPPER CENTER 2** (Z93) 1 S UTC-9(-8DT) N61°56.47' W145°17.64'

ANCHORAGE

1150 NOTAM FILE ENA

**RWY 13-31:** 2200X55 (GRVL-DIRT)

**RWY 13:** Tree.

**RWY 31:** Tree.

**AIRPORT REMARKS:** Unattended. Road runs parallel to rwy 2' from E edge.

Road crosses 405' from Rwy 13 thld. Rwy not maintained and

condition not monitored, recommend visual inspection prior to landing.

No winter maintenance. Residential property with free roaming guard

dogs on east side of rwy. Rwy soft during breakup. Rwy 13-31 safety

area 600' South end and 400' north end. Rwy 13 and Rwy 31 NSTD

markings, thlds and rwy edges marked with cones. Rwy 31 thld cones

damaged/missing, not visible when taxiing on rwy. Grass and brush up

to 4 ft high on runway surface during summer months.

**AIRPORT MANAGER:** 907-822-3222

**COMMUNICATIONS:** CTAF 122.9

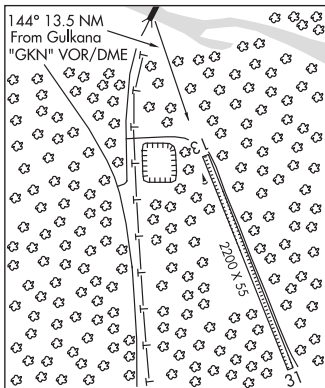
**RADIO AIDS TO NAVIGATION:** NOTAM FILE GKN.

**GULKANA (H) VOR/DME** 115.6 GKN Chan 103 N62°09.23'

W145°26.84' 144° 13.5 NM to fld. 1549/17E.

**COMM/NAV/WEATHER REMARKS:** For a toll free call to Kenai FSS dial

1-866-864-1737.



**CORDOVA**

**CORDOVA MUNI** (CKU) 1 E UTC-9(-8DT) N60°32.62' W145°43.55'

ANCHORAGE

59 NOTAM FILE JNU

**RWY 06-24:** 1800X60 (GRVL) 0.5% up SW

**RWY 06:** Trees. Rgt tfc.

**RWY 24:** Road.

**SERVICE:** S4

**AIRPORT REMARKS:** Unattended. Rwy cond not monitored, recommend visual

inspection prior to ldg. Birds invof arpt during summer months. Snow

removal on irregular basis. Steep ridge and hill along North edge, strong

East winds, rwy subj to strong downdrafts. Birds roost on South side,

mountains 3 miles from AER 24. Busy residential road borders

northside and parallels rwy. Larger grvl at AER24. Seaplane oprs in

apch to Rwy 24. Rwy 06-24 marked with reflective cones. Rwy edge

cones removed for winter 15 Oct thru 1 May.

**AIRPORT MANAGER:** 907-424-3202

**COMMUNICATIONS:** CTAF 122.5

**RCO** 123.6 122.2 (JUNEAU FSS)

**MOUNT EYAK RCO** 122.5 (JUNEAU FSS)

**RADIO AIDS TO NAVIGATION:** NOTAM FILE JNU.

**JOHNSTONE POINT (H) VOR/DME** 116.7 JOH Chan 114

N60°28.86' W146°35.96' 063° 26.2 NM to fld. 48/18E.

wx cam

VOR unusable:

090°-124° byd 23 NM blo 8,000'

125°-188° byd 10 NM

DME unusable:

090°-124° byd 23 NM blo 12,000'

125°-191° byd 10 NM

**COMM/NAV/WEATHER REMARKS:** For a toll free call to Juneau FSS dial 1-866-297-2236.

**WATERWAY 09W-27W:** 8000X3000 (WATER)

**SEAPLANE REMARKS:** Unattended. No public seaplane dock. Public seaplane facilities at small boat harbor. Freeze up in winter;

Tidewater remains open. Operates in Eyak Lake.

