

**WAYNESVILLE—ST ROBERT RGNL FORNEY FLD** (TBN)(KTBN) MIL/CIV A 0 SW UTC-6(-5DT)

**KANSAS CITY**  
H-5D, L-16G  
IAP, AD

N37°44.50' W92°08.44'  
1160 B Class I, ARFF Index A NOTAM FILE TBN  
RWY 15-33: H6037X150 (ASPH) PCN 54 F/AW/T HIRL

**RWY 15:** MALSR. REIL. PAPI(P4L)—GA 3.0° TCH 50'. RVR-R Thld dsplcd 502'. Pole.

**RWY 33:** MALS. REIL. PAPI(P4R)—GA 3.0° TCH 36'. RVR-T Thld dsplcd 527'. Road. Rgt tfc.

**SERVICE:** FUEL 100LL, JET A LGT When twr clsd ACTIVATE MALS Rwy 33; MALSR Rwy 15; REIL Rwy 15 and Rwy 33; PAPI Rwy 15 and Rwy 33; HIRL Rwy 15-33—125.4. **MILITARY—** FUEL No Mil Fuel Avbl. CIV: NC A — avbl 1400-2300Z± OT C573-329-4216. 100LL avbl 24 hr with credit card.

**AIRPORT REMARKS:** Attended Mon-Fri 1300-0400Z±. Excluding hols.

Surface visibility limited by tree line from east to south to west.

**MILITARY REMARKS:** Opr 1300-0400Z± Mon-Fri exc hol. **CAUTION** South end of rwy safety zone unprotected when twr clsd. **RSTD** PPR for all transient military acft DSN 581-0165/4819, C573-596-0165/4819. **MISC** Wx svc avbl Mon-Fri exc hol 1300-0400Z±. AN/FMQ-19 automated observing sys in use, augmented by human obsn when necessary during afld hrs. OT remote briefing svc avbl 26 OWS Barksdale AFB DSN 781-4775, C318-456-4775, C866-223-2398 (toll free).

**AIRPORT MANAGER:** 573-596-0165

**WEATHER DATA SOURCES:** ASOS 118.7. Frequency: 229.4

**COMMUNICATIONS:** CTAF 125.4 D-ATIS 118.7 229.4

Ⓡ **KANSAS CITY CENTER APP/DEP CON** 128.35 284.675

**FORNEY TOWER** 125.4 268.7 (1300-0400Z± Mon-Fri except holidays) **GND CON** 123.75 256.8

**FORNEY OPS** 127.3 237.5 **ARRG OPS** 32.125 140.2 245.7

**CLEARANCE DELIVERY PHONE:** When ATCT clsd, for CD ctc Kansas City ARTCC at 913-254-8508.

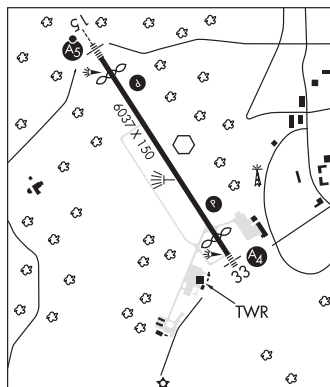
**AIRSPACE:** CLASS D svc 1300-0400Z± Mon-Fri exc hol; other times CLASS G.

**RADIO AIDS TO NAVIGATION:** NOTAM FILE TBN.

**FORNEY (L) VOR** 110.0 TBN N37°44.55' W92°08.34' at fld. 1155/OE. VOR unmonitored when twr clsd.

**MAPLES (L) VORTAC** 113.4 MAP Chan 81 N37°35.45' W91°47.31' 292° 19.1 NM to fld. 1374/6E. NOTAM FILE COU.

**ILS/DME** 110.9 I-TBN Chan 46 Rwy 15. Unmonitored when twr clsd. ILS classificaton code ie.



**WEST PLAINS RGNL** (UNO)(KUNO) 10 NW UTC-6(-5DT) N36°52.71' W91°54.16'

**KANSAS CITY**  
H-6J, L-16G  
IAP

1228 B NOTAM FILE UNO

**RWY 18-36:** H5101X75 (ASPH) S-30, D-39 MIRL

**RWY 18:** REIL. PAPI(P2L)—GA 3.0° TCH 37'.

**RWY 36:** REIL. PAPI(P2L)—GA 3.0° TCH 37'.

**SERVICE:** FUEL 100LL, JET A LGT ACTIVATE MIRL Rwy 18-36, PAPI Rwy 18 and Rwy 36 and REIL Rwy 18 and 36 after 0400Z±—CTAF.  
**AIRPORT REMARKS:** Attended 1400-2300Z±. For attendant after 2300Z± call 417-257-1539 or 417-274-4043. Helicopter ops on and invof arpt. Ultralights on and in vicinity of arpt.

**AIRPORT MANAGER:** 417 372-3997

**WEATHER DATA SOURCES:** ASOS 123.825 (417) 257-1313.

**COMMUNICATIONS:** CTAF/UNICOM 122.8

**RCO** 122.15 (COLUMBIA RADIO)

**MEMPHIS CENTER APP/DEP CON** 120.075

**CLEARANCE DELIVERY PHONE:** For CD if una to ctc on FSS freq, ctc Memphis ARTCC at 901-368-8453/8449.

**RADIO AIDS TO NAVIGATION:** NOTAM FILE UNO.

**HUTTON (L) DME** 111.6 HUW Chan 53 N36°52.28' W91°54.00' at fld. 1222/OE.

