

PIERRE RGNL (PIR)(KPIR) 3 E UTC-6(-5DT) N44°22.96' W100°17.16'

1744 B ARFF Index—See Remarks NOTAM FILE PIR MON Airport

OMAHA
H-21, L-12H
IAP, AD

RWY 13-31: H6900X100 (ASPH-GRVD) S-91, D-108, 2S-137,
2D-168 PCN 51 F/C/W/T HIRL

RWY 13: REIL. PAPI(P4L)—GA 3.0° TCH 52'.

RWY 31: MALSR. PAPI(P4L)—GA 3.0° TCH 55'.

RWY 07-25: H6880X150 (ASPH-GRVD) S-91, D-114, 2S-145,
2D-180 PCN 58 F/C/W/T HIRL 0.6% up W

RWY 07: REIL. PAPI(P4L)—GA 3.0° TCH 46'. Tank.

RWY 25: REIL. PAPI(P4L)—GA 3.0° TCH 53'.

RUNWAY DECLARED DISTANCE INFORMATION

RWY 07: TORA-6880 TODA-6880 ASDA-6830 LDA-6830

RWY 13: TORA-6900 TODA-6900 ASDA-6900 LDA-6900

RWY 25: TORA-6880 TODA-6880 ASDA-6880 LDA-6880

RWY 31: TORA-6900 TODA-6900 ASDA-6900 LDA-6900

SERVICE: S4 FUEL 100LL, JET A QX 1, 2, 3, 4 LGT ACTIVATE MALSR

Rwy 31; REIL Rwy 07, Rwy 13 and Rwy 25; PAPI Rwy 07, Rwy 25,
Rwy 13 and Rwy 31; HIRL Rwy 07-25 and Rwy 13-31—CTAF.

AIRPORT REMARKS: Attended Mon-Fri 1100-0600Z, Sat-Sun

1100-0400Z. Birds on and in/ovf arpt and within a 25 NM radius. For

attendant other times call 605-224-9000/8621. Arpt cond

unmonitored during 0400-1200Z Mon-Fri, 1900Z Sat to 1900Z

Sun. No line of sight between rwy ends of Rwy 07-25. Class I, ARFF

Index B. 48 hr PPR for unscheduled acf ops involving acft designed for 31 or more passenger seats call 605-773-7447

or 605-773-7405. Taxiway C is 50' wide and restricted to acft 75,000 pounds or less. Air carrier landing fee, \$14 +

\$1 per 1000 lbs over 20k lbs. NOTE: See Special Notices Section—Aerobatic Practice Areas.

AIRPORT MANAGER: 605-773-7447

WEATHER DATA SOURCES: ASOS 119.025 (605) 224-6087.

COMMUNICATIONS: CTAF 122.7 UNICOM 122.95

RCD 122.2 (HURON RADIO)

Ⓜ **MINNEAPOLIS CENTER APP/DEP CON** 125.1

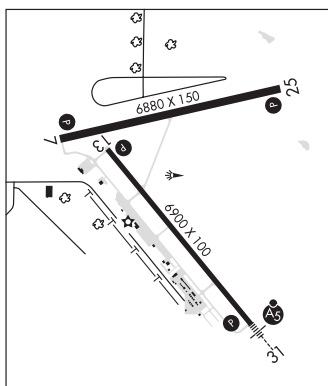
CLEARANCE DELIVERY PHONE: For CD if una to ctc on FSS freq, ctc Minneapolis ARTCC at 651-463-5588.

AIRSPACE: CLASS E.

RADIO AIDS TO NAVIGATION: NOTAM FILE PIR.

(L) **VORTACW** 112.5 PIR Chan 72 N44°23.67' W100°09.77' 251° 5.3 NM to fld. 1791/11E.

ILS/DME 111.9 I-PIR Chan 56 Rwy 31. Class IA.



PINE RIDGE (IEN)(KIEN) 2 E UTC-7(-6DT) N43°01.28' W102°30.40'

3333 B NOTAM FILE IEN

CHEYENNE
H-5B, L-12G
IAP

RWY 12-30: H5000X75 (ASPH) S-12 MIRL 0.7% up SE

RWY 12: P-line.

RWY 30: PAPI(P2L)—GA 3.0° TCH 28'. Fence.

SERVICE: LGT MIRL Rwy 12-30 and PAPI Rwy 30 opr dusk-0530Z, after 0530Z; ACTIVATE—CTAF.

AIRPORT REMARKS: Unattended. Cold temperature restricted arpt. Altitude correction restricted at or below -33°C/-27°F. Rwy 12 and Rwy 30 mkns faded; non-reflective.

AIRPORT MANAGER: 605-441-1211

WEATHER DATA SOURCES: ASOS 126.775 (605) 867-1584.

COMMUNICATIONS: CTAF 122.9

Ⓜ **DENVER CENTER APP/DEP CON** 127.95

CLEARANCE DELIVERY PHONE: For CD ctc Denver ARTCC at 303-651-4257.

RADIO AIDS TO NAVIGATION: NOTAM FILE RAP

RAPID CITY (H) VORTAC 112.3 RAP Chan 70 N43°58.56' W103°00.74' 146° 61.4 NM to fld. 3157/13E.

