

STAUNTON/WAYNESBORO/HARRISONBURG**SHENANDOAH VALLEY RGNL** (SHD)(KSHD) 10 NE UTC-5(-4DT) N38°15.83' W78°53.79'**WASHINGTON**

1201 B TPA—See Remarks Class I, ARFF Index B NOTAM FILE SHD

H-10H, 12I, L-26J**RWY 05-23:** H6002X150 (ASPH-GRVD) S-75, D-150, 2S-175,**IAP**

2D-215 PCN 44 F/B/X/U HIRL 0.4% up NE

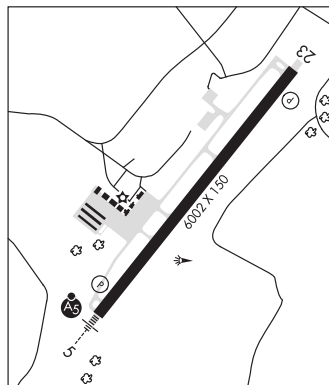
RWY 05: MALSR. PAPI(P4L)—GA 3.0° TCH 56'. Pole.**RWY 23:** REIL. PAPI(P4L)—GA 3.0° TCH 44'.**RUNWAY DECLARED DISTANCE INFORMATION****RWY 05:** TORA-6002 TODA-6002 ASDA-6002 LDA-6002**RWY 23:** TORA-6002 TODA-6002 ASDA-6002 LDA-6002**SERVICE:** S4 FUEL 100LL, JET A OX 3, 4 LGT ACTIVATE REIL Rwy 23, MALSR Rwy 05, HIRL Rwy 05-23 and twy lgts—CTAF. PAPI Rwy 05 and Rwy 23 opr continuously.**AIRPORT REMARKS:** Attended continuously. PPR 12 hrs for unsked air carrier ops with more than 30 passenger seats call 540-234-8304. TPA 2001(800) piston acct, 2701(1500) jet/turbo acct.**AIRPORT MANAGER:** 540-234-8304**WEATHER DATA SOURCES:** AWOS-3 124.925 (540) 234-0110.**COMMUNICATIONS:** CTAF/UNICOM 123.0**MONTEBELLO RCO** 122.1R 115.3T (LEESBURG RADIO)Ⓡ **POTOMAC APP/DEP CON** 132.85**CLNC DEL** 118.35**CLEARANCE DELIVERY PHONE:** For CD ctc Potomac Apch at 866-640-4124.**AIRSPACE:** CLASS E.**RADIO AIDS TO NAVIGATION:** NOTAM FILE DCA.**MONTEBELLO (L) VOR/DME** 115.3 MOL Chan 100 N37°54.03' W79°06.41' 030° 23.9 NM to fld. 3455/5W.

DME portion unusable:

158°-168° byd 30 NM blo 6,000'

STAUT NDB (LOMW) 375 SH N38°12.11' W78°57.44' 047° 4.7 NM to fld. 1240/9W. NOTAM FILE SHD.**ILS** 109.5 I-SHD Rwy 05. Class IT. LOM STAUT NDB. Autopilot coupled apchs not applicable blw 1,533' MSL.

Unmonitored when FBO clsd.

**STAUT** N38°12.11' W78°57.44' NOTAM FILE SHD.**CINCINNATI****NDB (LOMW)** 375 SH 047° 4.7 NM to Shenandoah Valley Rgnl. 1240/9W.