

ROSEBURG RGNL (RBG)(KRBG) 1 NW UTC-8(-7DT) N43°14.36' W123°21.35'

534 B NOTAM FILE RBG

RWY 16-34: H5003X100 (ASPH) S-42, D-54, 2D-88 MIRL

0.7% up N

RWY 16: REIL. Thld dspcd 1100'. Hill.

RWY 34: REIL. PAPI(P4R)—GA 4.0° TCH 53'. Thld dspcd 372'. Road.

SERVICE: S4 FUEL 100LL, JET A OX 1 LGT ACTIVATE REIL Rwy 16 and Rwy 34, MIRL Rwy 16-34—CTAF. Rwy 34 PAPI opr continuously.

AIRPORT REMARKS: Attended 1600-0100Z†. Waterfowl on and invof arpt.

Rwy 16 has a 150' blast pad marked with yellow chevrons. Segmented circle NSTD, marked with white tires.

AIRPORT MANAGER: 541-672-7701

WEATHER DATA SOURCES: ASOS 135.475 (541) 673-1483.

COMMUNICATIONS: CTAF/UNICOM 122.8

RCO 122.55 (MC MINNVILLE RADIO)

③ SEATTLE CENTER APP/DEP CON 127.55

CLEARANCE DELIVERY PHONE: For CD if una to ctc on FSS freq, ctc Seattle ARTCC at 253-351-3694.

RADIO AIDS TO NAVIGATION: NOTAM FILE RBG.

(L) VORW/DME 108.2 RBG Chan 19 N43°10.95'

W123°21.13' 337° 3.4 NM to fld. 1320/20E.

DME unusable:

070°-130° byd 20 NM blo 8,000'

130°-190° byd 30 NM blo 7,000'

240°-320° byd 25 NM blo 5,000'

VOR unusable:

070°-130° byd 20 NM blo 8,000'

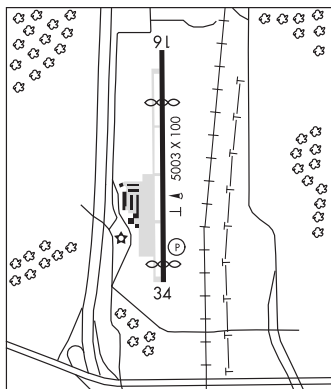
130°-150° byd 20 NM blo 7,000'

240°-290° byd 25 NM blo 5,000'

KLAMATH FALLS

H-1B, L-1A

IAP



SALEM

MCNARY FLD (SLE)(KSLE) P (ARNG) 2 SE UTC-8(-7DT) N44°54.57' W123°00.15'

213 B Class IV, ARFF Index A NOTAM FILE SLE MON Airport

RWY 13-31: H5811X150 (ASPH-GRVD) S-105, D-147, 2S-154

PCN 41 F/C/X/T HIRL 0.3% up SE

RWY 13: ODALS. REIL. VASI(V4L)—GA 3.0° TCH 50'. RVR-R Road.

RWY 31: MALS. RVR-T Tree.

RWY 16-34: H5146X100 (ASPH-GRVD) S-39.5, D-52

PCN 15 F/D/X/T MIRL 0.3% up S

RWY 16: REIL. PAPI(P4L)—GA 3.0° TCH 38'. Road.

RWY 34: REIL. PAPI(P4L)—GA 4.0° TCH 42'. Tree.

LAND AND HOLD-SHORT OPERATIONS

LDG RWY	HOLD-SHORT POINT	AVBL LDG DST
RWY 31	16-34	3150
RWY 34	13-31	3050

RWY 34

RUNWAY DECLARED DISTANCE INFORMATION

RWY 13: TORA-5811 TODA-5811 ASDA-5811 LDA-5811

RWY 16: TORA-5145 TODA-5145 ASDA-5145 LDA-5145

RWY 31: TORA-5811 TODA-5811 ASDA-5811 LDA-5811

RWY 34: TORA-5145 TODA-5145 ASDA-5145 LDA-5145

SERVICE: S4 FUEL 100LL, JET A OX 1, 3 LGT Rwy 16 and Rwy 34

PAPI OTS indef. When twr clsd ACTIVATE MALS. Rwy 31; ODALS Rwy

13; REILS Rwy 13, Rwy 16 and Rwy 34; HIRL Rwy 13-31, MIRL Rwy

16-34—CTAF.

MILITARY—FUEL (NC-100LL - Self svc avbl H24. A - Avbl after bus hr with PN C503-508-4178/593-364-0111.)

AIRPORT REMARKS: Attended 1530Z†-dusk. Self fueling, 100LL only, avbl 24 hrs a day. Jet A avbl aft nml bus hrs with advnd

notice at 503-508-4178 or 503-364-4158. Airfield conds not mntd btn 1600-0800Z† and all times Sat and Sun. Arpt

clsd aft heavy snwfl. Rsg trrn and trees W and S of arpt, inclg extd cntrln of Rwy 34. Trees on extd cntrln of Rwy 16. Ngt

ops not rcmd both rwys. PPR for unscheduled air carrier ops with more than 30 pax seats, call arpt mgr on

503-588-6314. PPR rdq for prkg acft on coml ramp over 99,000 lbs call amgr 503-588-6314. Acft prkg on S G/A

ramp ltd to acft under 12,500 lbs. Bird haz, heavy concentration waterfowl adjacent to arpt and apchs to all rwys. Twy

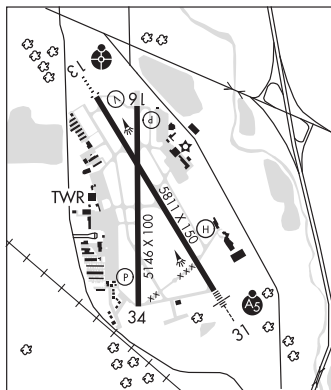
A from Twy L to Twy L9 not visible from twr. Flocks of geese concentrated transiting Class D airspace at tfc pat alt Oct-May.

Ns abtmt procs in efct. Avd ovr flt of smrg restl areas when poss.

SEATTLE

H-1B, L-1B

IAP, AD



CONTINUED ON NEXT PAGE

