

POCATELLO RGNL (PIH)(KPIH) 7 NW UTC-7(-6DT) N42°54.59' W112°35.76'

4452 B Class I, ARFF Index A NOTAM FILE PIH

RWY 03-21: H9059X150 (ASPH-PFC) S-100, D-160, 2S-175,
2D-265 PCN 64 F/B/X/T HIRL**RWY 03:** REIL. PAPI(P4L)—GA 3.0° TCH 53'.**RWY 21:** MALSR. PAPI(P4L)—GA 3.0° TCH 52'. RVR-T**RWY 17-35:** H7150X100 (ASPH-GRVD) S-74, D-110, 2D-199
PCN 29 F/B/X/T MIRL**RWY 17:** REIL. PAPI(P4L)—GA 3.0° TCH 45'.**RWY 35:** PAPI(P4L)—GA 3.0° TCH 45'. Pole.**RUNWAY DECLARED DISTANCE INFORMATION****RWY 03:** TORA-9059 TODA-9059 ASDA-9059 LDA-9059**RWY 17:** TORA-7150 TODA-7150 ASDA-7150 LDA-7150**RWY 21:** TORA-9059 TODA-9059 ASDA-9059 LDA-9059**RWY 35:** TORA-7150 TODA-7150 ASDA-7150 LDA-7150**SERVICE:** S4 FUEL 100LL, JET A1, A1+ OX 3, 4 LGT Aft ATCT clsd
actvt MALSR Rwy 21; REIL Rwy 17 and Rwy 03; PAPI Rwy 03, Rwy
21, Rwy 17 and Rwy 35; MIRL Rwy 17-35; HIRL Rwy 03-21—CTAF.**AIRPORT REMARKS:** Attended 1300-0300Z†. For service other times call
1-800-350-0737. Afd cond unmonitored 0630-1300Z† daily exc
air carrier ops and 24 hr PPR 208-234-6154 or 208-241-7949.
Additional fees apply. Flocks of waterfowl invof arpt. Twy G has no edge
lgts or reflectors, rstd to day use only. Radio ctl acft 1 mile east of arpt blo 400' AGL. 72 hrs PPR for unscheduled air
carrier ops with more than 30 pax seats call admin 208-234-6154 or ops 208-241-7949. Additional fees apply.**AIRPORT MANAGER:** 208-234-6154**WEATHER DATA SOURCES:** ASOS 135.625 (208) 235-1287.**COMMUNICATIONS:** CTAF 119.1 ATIS 135.625 208-232-2269 UNICOM 122.95**RCO 122.35** (BOISE RADIO)Ⓡ **SALT LAKE CENTER APP/DEP CON 128.35****TOWER 119.1** (1300-0500Z†) **GND CON 121.9****CLEARANCE DELIVERY PHONE:** For CD if una to ctc on FSS freq, ctc Salt Lake ARTCC at 801-320-2568.**AIRSPACE:** CLASS D svc 1300-0500Z†; other times CLASS E.**RADIO AIDS TO NAVIGATION:** NOTAM FILE PIH.**(H) VOR/DME 112.6** PIH Chan 73 N42°52.22' W112°39.13' 029° 3.4 NM to fld. 4433/17E.

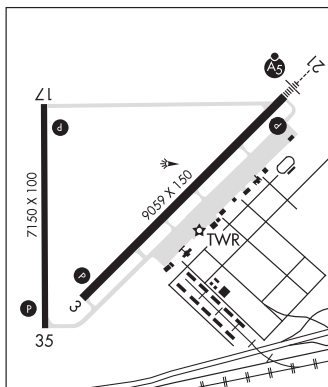
VOR unusable:

060°-130° byd 25 NM blo 13,500'

DME unusable:

060°-130° byd 25 NM blo 17,000'

160°-175° byd 25 NM blo 13,000'

TYHEE NDB (LOMW) 383 PI N42°57.83' W112°30.98' 210° 4.8 NM to fld. 4462/17E.**ILS/DME 110.3** I-PIH Chan 40 Rwy 21. Class IE. LOM TYHEE NDB. Unmonitored when ATCT clsd.**COMM/NAV/WEATHER REMARKS:** Freq 121.5 not avbl at twr. FBO monitors 122.95 and 123.0.**SALT LAKE CITY****H-3D, L-11C****IAP, AD****PORTHILL****ECKHART INTL** (1S1) 0 W UTC-8(-7DT) N48°59.43' W116°30.12'

1758 LRA NOTAM FILE BOI

RWY 15-33: 3650X175 (TURF)**RWY 15:** Trees.**RWY 33:** Road.**AIRPORT REMARKS:** Unattended. Rwy 15 do not use asph twy ptn for tkof. Recommend land Rwy 33; tkf Rwy 15 when wind
condition permits. No winter maintenance. Rwy 15-33 edges and thld marked with white rocks. +25' hop poles located
adjacent to both sides of rwy. Acft parking limited to 2 hrs in customs terminal area.**AIRPORT MANAGER:** 208-334-8775**COMMUNICATIONS:** CTAF/UNICOM 122.8**CLEARANCE DELIVERY PHONE:** For CD ctc Seattle ARTCC at 253-351-3694.**GREAT FALLS**