

**SAN ANGELO RGNL/MATHIS FLD** (SJT)(KSJT) 7 SW UTC-6(-5DT) N31°21.46' W100°29.78'

SAN ANTONIO

1919 B Class I, ARFF Index B NOTAM FILE SJT

H-66, L-19B

RWY 18-36: H8054X150 (ASPH-GRVD) S-70, D-100, 2S-127

IAP, AD

PCN 67 F/A/W/T MIRL

RWY 18: REIL: PAPI(P4L)—GA 3.0° TCH 45'. Thld dspcd 902'. Road.

RWY 36: PAPI(P4L)—GA 3.0° TCH 48'.

RWY 03-21: H5940X150 (ASPH-GRVD) S-70, D-100, 2S-127

PCN 115F/A/W/T HIRL 0.4% up SW

RWY 03: MALSR. RVR-T

RWY 21: ODALS. VASI(V4L)—GA 3.0° TCH 52'. RVR-R

RWY 09-27: H4406X75 (ASPH) S-70, D-100, 2S-127

PCN 39 F/A/W/T MIRL

RWY 09: Road.

RWY 27: Road.

**RUNWAY DECLARED DISTANCE INFORMATION**

RWY 03: TORA-5940 TODA-5940 ASDA-5940 LDA-5940

RWY 09: TORA-4406 TODA-4406 ASDA-4406 LDA-4406

RWY 18: TORA-8054 TODA-8054 ASDA-8054 LDA-7152

RWY 21: TORA-5940 TODA-5940 ASDA-5940 LDA-5940

RWY 27: TORA-4406 TODA-4406 ASDA-4406 LDA-4406

RWY 36: TORA-7152 TODA-7152 ASDA-7152 LDA-7152

**SERVICE:** S4 FUEL 100LL, JET A, B+ OX 1, 2, 4 LGT When ATCT

clsd MIRL Rwy 18-36 preset low intst. To incr intst and ACTVT MALSR Rwy 03; ODALS Rwy 21; REIL Rwy 18; PAPI Rwys 18 and 36; HIRL Rwy 03-21; MIRL Rwy 09-27—CTAF.

**AIRPORT REMARKS:** Attended 1200-0400Z†. Fee for fuel after hrs call 325-656-1836/1837. PPR 12 hrs for unscheduled air carrier ops with over 30 pax seats, call arprt mgr 325-659-6409, ext 3.**AIRPORT MANAGER:** 325-659-6409**WEATHER DATA SOURCES:** ASOS 128.45 (325) 949-6686.**COMMUNICATIONS:** CTAF 118.3 ATIS 128.45 UNICOM 122.95

RCO 122.25 (SAN ANGELO RADIO)

Ⓡ APP/DEP CON 125.35 (1200-0300Z‡)

Ⓡ FORT WORTH CENTER APP/DEP CON 126.15 (0300-1200Z‡)

TOWER 118.3 (1300-0300Z‡) GND CON 121.9

**CLEARANCE DELIVERY PHONE:** For CD if una to ctc on FSS freq, ctc Fort Worth ARTCC at 817-858-7584.**AIRSPACE:** CLASS D svc 1300-0300Z‡; other times CLASS E.**RADIO AIDS TO NAVIGATION:** NOTAM FILE SJT.

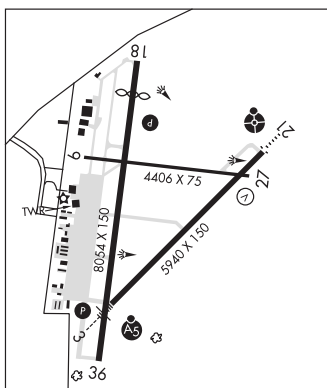
(H) VORTACW 115.1 SJT Chan 98 N31°22.50' W100°27.29' 234° 2.4 NM to fld. 1886/10E.

WOOLE NDB (LOMW) 356 SJ N31°16.78' W100°34.57' 036° 6.2 NM to fld. 2127/5E.

ILS/DME 109.7 I-SJT Chan 34 Rwy 03. Class IE. LOM WOOLE NDB. ILS/DME unmonitored when ATCT clsd.

Glide slope unusable for coupled apch blw 2,685' MSL.

ASR (1200-0600Z‡)

**SAN ANTONIO****BOERNE STAGE FLD** (5C1) 20 NW UTC-6(-5DT) N29°43.39' W98°41.67'

SAN ANTONIO

1384 B NOTAM FILE SJT

L-19C

RWY 17-35: H5006X60 (ASPH) LIRL

IAP

RWY 17: Thld dspcd 629'. Fence. Rgt tfc.

RWY 35: Thld dspcd 1086'. Trees.

**SERVICE:** S4 FUEL 100LL, JET A**AIRPORT REMARKS:** Attended continuously. Rwy 35 +35 ft lgtd pwr poles at 125 ft and 300 ft fm thr, 125 ft L of cntrln. South rwy exit clsd indefly; backtaxi to exit rwy. Glider act on and invof arpt. NS ABTMT procedures in effect ctc arprt mgr 830-981-2345. All lgd turbine acft must be stage 3 or better. No tgls, stop and go or low apchs. Vehicles driving on and acrs rwy. Use extreme ctn when oprg in and out of arpt for oftc lgd sat at or abv 3000 ft MSL.**AIRPORT MANAGER:** 830-981-2345**WEATHER DATA SOURCES:** AWOS-3 118.725 (830) 755-9099.**COMMUNICATIONS:** CTAF/UNICOM 123.0

SAN ANTONIO APP/DEP CON 125.1

**CLEARANCE DELIVERY PHONE:** For CD ctc San Antonio Apch at 210-805-5516.**RADIO AIDS TO NAVIGATION:** NOTAM FILE SAT.

SAN ANTONIO (H) VORTACW 116.8 SAT Chan 115 N29°38.64'

W98°27.68' 283° 13.1 NM to fld. 1159/8E.

**COMM/NAV/WEATHER REMARKS:** UNICOM unmt.