

**VALDOSTA RGNL** (VLD)(KVLD) 3 S UTC-5(-4DT) N30°46.88' W83°16.57'

JACKSONVILLE

203 B Class I, ARFF Index A NOTAM FILE VLD MON Airport

H-9B, 12F, L-21D, 22J

**RWY 17-35:** H8002X150 (ASPH-GRVD) S-104, D-169, 2S-124, 2D-303 PCN 41 F/A/X/T HIRL

**RWY 17:** REIL. PAPI(P4L)—GA 3.0° TCH 50'. Trees.

**RWY 35:** MALSR. PAPI(P4L)—GA 3.0° TCH 52'. Trees.

**RWY 04-22:** H5598X100 (ASPH-GRVD) S-24, D-95 PCN 7 F/B/Y/U MIRL

**RWY 04:** REIL. PAPI(P4L)—GA 3.25° TCH 52'. Trees.

**RWY 22:** REIL. PAPI(P4L)—GA 3.25° TCH 56'. Trees.

**RWY 13-31:** H3636X75 (ASPH) S-24, D-155 PCN 2 F/B/Z/U MIRL

**RWY 13:** Trees.

**RWY 31:** Trees.

**SERVICE:** S4 FUEL 100LL, JET A1+ LGT When ATCT clsd ACTVT  
MALSR Rwy 35; REIL Rwy 17; PAPI Rwy 17 and 35; HIRL Rwy 17-35—CTAF. REIL Rwy 04-22; PAPI Rwy 04 and 22; MIRL Rwy 04-22 and Rwy 13-31 unavbl when ATCT clsd.

**AIRPORT REMARKS:** Attended 1100-0300Z†. Ctc FBO 229-242-3175.

Rwy 04-22 has 10' paved shoulders with vegetation. Rwy 13-31 has 37.5' paved shoulders. Rwy 13-31 clsd to air carrier. Clsd to unscheduled air carrier ops with more than 30 pax seats exc 24 hr PPR call arpt mgr 229-333-1833. Rwy 13-31 not avbl for sked acr ops with more than 9 psgr seats or unsked acr at least 31 psgr seats. Rwy 13-31 NW 860' not visible from the twr due to trees. Pilots must supply own tied down ropes.

**AIRPORT MANAGER:** 229-333-1833

**WEATHER DATA SOURCES:** ASOS 126.225 (229) 245-8746.

**COMMUNICATIONS:** CTAF 120.9 UNICOM 122.95

**RCO 122.1R 114.8T 122.2 (MACON RADIO)**

Ⓡ **APP/DEP CON 126.6** (Opr 1300-0600Z† Mon-Thu, 1300-0300Z† Fri, 1400-2200Z† Sat, Sun and hol) other times ctc

Ⓡ **JAX CENTER APP/DEP CON 133.7**

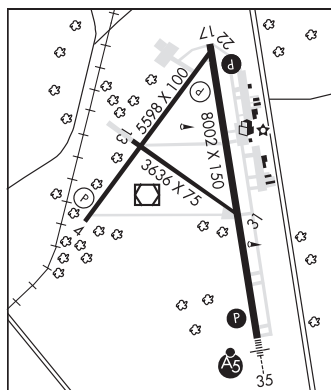
**TOWER 120.9** (1200-0300Z†) **GND CON 121.7**

**AIRSPACE:** CLASS D svc 1200-0300Z†; other times CLASS G.

**RADIO AIDS TO NAVIGATION:** NOTAM FILE VLD.

(H) **VOR/DME 114.8** OTK Chan 95 N30°46.83' W83°16.78' at fld. 199/2W.

**ILS 110.9** I-VLD Rwy 35. Class IT. Unmonitored when ATCT clsd.

**VIDALIA RGNL** (VDI)(KVDI) 3 SE UTC-5(-4DT) N32°11.56' W82°22.27'

ATLANTA

274 B NOTAM FILE VDI

H-9B, 12F, L-24H

**RWY 07-25:** H6002X100 (CONC) S-30, D-48, 2D-85 HIRL

**RWY 07:** REIL. PAPI(P4L)—GA 3.0° TCH 41'. Trees.

**RWY 25:** MALSR. REIL. PAPI(P4L)—GA 3.0° TCH 48'.

**RWY 14-32:** H5002X75 (CONC) S-30, D-48, 2D-85

**RWY 14:** Trees.

**RWY 32:** Trees.

**SERVICE:** FUEL 100LL, JET A+ LGT HIRL Rwy 07-25 preset med ints dusk-0400Z†, after 0400Z† ACTIVATE—CTAF. ACTIVATE MALSR Rwy 25—CTAF. Rwy 07 PAPI opr continuously. Rwy 25 PAPI opr continuously.

**AIRPORT REMARKS:** Attended 1300-2300Z†. Fuel avbl 24 hrs with credit card.

**AIRPORT MANAGER:** 912-537-3979

**WEATHER DATA SOURCES:** AWOS-3 119.925 (912) 538-0219.

**COMMUNICATIONS:** CTAF/UNICOM 122.8

Ⓡ **JAX CENTER APP/DEP CON 127.575**

**CLEARANCE DELIVERY PHONE:** For CD ctc Jacksonville ARTCC at 904-845-1592.

**RADIO AIDS TO NAVIGATION:** NOTAM FILE MCN.

**DUBLIN (L) VORTAC 113.1** DBN Chan 78 N32°33.81'

W82°49.80' 138° 32.2 NM to fld. 306/5W.

VOR portion unusable:

215°-285° byd 10 NM blo 3,500'

001°-139° byd 33 NM

001°-139° blo 5,000'

**ONYUN NDB (MHW) 372** UQN N32°13.42' W82°17.85' 250° 4.2 NM to fld. 161/6W.

**ILS 110.3** I-VDI Rwy 25. Class IB. LOM ONYUN NDB.

