

JACKSONVILLE

ALBERT J ELLIS (OAJ)(KOAJ) 10 NW UTC-5(-4DT) N34°49.75' W77°36.73'

93 B ARFF Index—See Remarks NOTAM FILE OAJ

RWY 05-23: H7100X150 (ASPH-GRVD) S-120, D-211, 2S-175,

2D-388 PCN 51 F/A/W/T HIRL

RWY 05: MALSR. PAPI(P4L)—GA 3.0° TCH 55'.

RWY 23: REIL. PAPI(P4L)—GA 3.0° TCH 47'.

SERVICE: S4 FUEL 100LL, JET A LGT ACTIVATE MALSR Rwy 05, REIL Rwy 23, HIRL Rwy 05-23 and PAPI Rwy 05 and Rwy 23—CTAF.

AIRPORT REMARKS: Attended 1000-0500Z†. For fuel other hrs call 910-347-8366. CLSD to air carrier ops with more than 30 pax seats 0500-1000Z† exc PPR call arpt mgr 910-324-1100 or 910-989-3168. Class I, ARFF Index B. Index B ARFF coverage provided during commercial air trc ops. Index C available upon req. CLSD to all mil acft over 17,000 lbs for air carrier ramp ops exc 24 hr PPR. Call arpt mgr 910-324-1100 or 910-989-3168. 180° turns on Rwy 05-23 not authorized for acft 60,000 lbs and over. Fid conditions not monitored 0500-1000Z†.

AIRPORT MANAGER: 910-324-1100

WEATHER DATA SOURCES: AWOS-3PT (910) 324-5233 LAWRS.

COMMUNICATIONS: CTAF 132.65 UNICOM 122.95 ATIS 124.475 or call

910-324-5233

Ⓡ WILMINGTON APP/DEP CON 135.75 (1100-0400Z†)

Ⓡ WASHINGTON CENTER APP/DEP CON 124.025 135.75 (0400-1100Z†)

ELLIS TOWER 132.65 (1200-0300Z†)

GND CON 125.4 CLNC DEL 125.4 CLNC DEL 121.4 (When twr clsd)

CLEARANCE DELIVERY PHONE: For CD when ATCT clsd, ctc Wilmington Apch at 910-815-4676, or when Apch clsd ctc Washington ARTCC at 703-771-3587.

AIRSPACE: CLASS D svc 1200-0300Z†; other times CLASS E.

RADIO AIDS TO NAVIGATION: NOTAM FILE ILM.

WILMINGTON (H) VORTAC 117.0 ILM Chan 117 N34°21.10' W77°52.46' 031° 31.4 NM to fld. 29/7W.

VOR portion unusable:

051°-185°

164°-051° blo 17,500'

186°-229° blo 3,000'

230°-315° byd 5 NM blo 17,500'

316°-050° blo 8,000'

TACAN DME unusable:

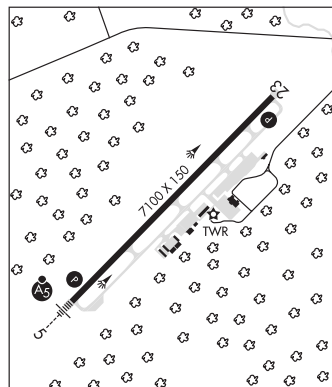
015°-305° byd 30 NM blo 2,500'

TACAN AZIMUTH unusable:

129°-160° byd 30 NM blo 2,500'

ELLAS NDB (LOMW) 261 OA N34°45.03' W77°42.27' 052° 6.6 NM to fld. 76/8W. NOTAM FILE OAJ.

ILS/DME 108.7 I-OAJ Chan 24 Rwy 05. Class IA. LOM ELLAS NDB. LOM ELLAS NDB unmonitored. LOC unusable byd 15° right of course.



SKY MANOR (N22) 8 W UTC-5(-4DT) N34°42.65' W77°35.10'

60 NOTAM FILE RDU

RWY 08-26: 3610X85 (TURF)

RWY 08: Thld dspclcd 595'. Trees.

RWY 26: Trees.

AIRPORT REMARKS: Unattended. CAUTION—Areas of standing water on rwy after rains. Be alert, deer invof arpt. West half of rwy extremely soft when wet. Tkf and ldg in strong crosswinds not recommended due to severe drafts from trees. Rwy 08-26 marked with yellow cones. Cones obscured by grass and brush. Private road parallels rwy on south side 20' from rwy edge, 30' hangar lctd 200' west of Rwy 26 thld and 100' rgt of cntrln, 90' trees along north side of rwy edge from Rwy 08 thld to term area, 90' trees 400' from Rwy 08 and Rwy 26 thlds across entire apch.

AIRPORT MANAGER: 910-389-3014

COMMUNICATIONS: CTAF 122.9

CLEARANCE DELIVERY PHONE: For CD ctc Washington ARTCC at 703-771-3587.

CHARLOTTE