

## COLORADO SPRINGS

CITY OF COLORADO SPRINGS MUNI (COS)(KCOS) P (AF AFRC) 6 SE UTC-7(-6DT) N38°48.35'

DENVER

H-3F, 5A, L-10F

IAP, AD

W104°42.05'

6187 B LRA Class I, ARFF Index C NOTAM FILE COS

RWY 17L-35R: H13501X150 (CONC-GRVD) S-120, D-250, 2S-175, 2D-550, 2D/2D2-1120 PCN 95 R/B/W/T HIRL CL

RWY 17L: MALSR. TDZL. PAPI(P4L)—GA 3.0° TCH 53'. RVR-TR 0.6% down.

RWY 35R: TDZL. REIL. PAPI(P4R)—GA 3.0° TCH 72'. RVR-TR 0.6% up.

RWY 17R-35L: H11022X150 (ASPH-GRVD) S-120, D-250, 2S-175, 2D-550, 2D/2D2-1120 PCN 99 F/B/X/T HIRL

RWY 17R: REIL. PAPI(P4L)—GA 3.0° TCH 55'. RVR-TR 1.2% down.

RWY 35L: MALSR. PAPI(P4L)—GA 3.0° TCH 71'. RVR-TR 1.2% up.

RWY 13-31: H8269X150 (ASPH-GRVD) S-120, D-171, 2S-175, 2D-279, 2D/2D2-691 PCN 48 F/C/X/T MIRL

RWY 13: REIL. PAPI(P4R)—GA 3.0° TCH 65'. 0.3% down..

RWY 31: REIL. PAPI(P4L)—GA 3.04° TCH 52'. Thld dsplcd 356'. Hill. 0.6% up..

## LAND AND HOLD—SHORT OPERATIONS

LDG RWY	HOLD—SHORT POINT	AVBL LDG DIST
RWY 31	17R-35L	7450
RWY 35L	13-31	10250

## RUNWAY DECLARED DISTANCE INFORMATION

RWY 13: TORA-8269 TODA-8269 ASDA-8269 LDA-8269

RWY 17L:TORA-13501 TODA-13501 ASDA-13501 LDA-13501

RWY 17R:TORA-11022 TODA-11022 ASDA-11022 LDA-11022

RWY 31: TORA-8269 TODA-8269 ASDA-8269 LDA-7913

RWY 35L:TORA-11022 TODA-11022 ASDA-11022 LDA-11022

RWY 35R:TORA-13501 TODA-13501 ASDA-13501 LDA-13501

**SERVICE:** S4 FUEL 100LL, JET A OX 1 LGT Lgt'd windsock apch Rwy 17L-35R, 17R-35L and 13-31. For REIL Rwy 13 and Rwy 31 and Rwy 17R ctc twr. REIL Rwy 13 O/S UFN. **MILITARY—** JASU 2(MA32A-60A), 2(MA32-86A), 2(AM32A-95), 1(SGNC), 2(B809D-Generators). **FUEL** A++(MIL). A, A+ (C719-591-2288.) (NC-100LL) **FLUID** PRESAIR LHOX; LOX-LOX and hi pressure air ltd. **OIL** O-133-148-156(Mil) **TRAN ALERT** PPR rqr for all tran acct—ctc afld mgmt DSN 834-4778/9 C719-556-4778/9. Afld mgmt opr 1300-0500Z±, clsd hol. Fort Carson arrival/departure air control group (ADACG) MSN, ctc DSN 532-8002/3 or C719-503-8002/3. All tran acct ctc High Country 30 min prior to arr. Tran acct ctc 21SW comd post (callsign: HIGH COUNTRY) with ATA and ATD.

**AIRPORT REMARKS:** Attended continuously. Waterfowl and migratory bird activity on and invof arpt. Acft transporting hazard cargo ctc afld mgmt on 318.05 30 minutes prior to arrival. Turbojet trng flts prohibited 0600-1300Z±. B52 ops prohibited. GA ramp between Twy A3 and A4 clsd to acft with wingspan more than 135'. Be alert; intensive USAF student trng invof Colorado Springs and Pueblo Colorado. Portions of Twys A, B, E, F, G, and M are blocked from view from the twr by obst. Portions of Twy C and Rwy 17R-35L are blocked from view from the twr when the infield mil operation scf is occupied by a C17 or C5. Insufficient twy corner fillets pavement for cntrl'n twy for acft with wingspans greater than 117' at Twys A2, A3, A4, B2, and B3. When crossing Rwy 17R-35L from A1 to B1 or B1 to A1, be aware you will not see A1 or B1 depending on direction crossing until you crest Rwy 17R-35L. When crossing from A1 to B1 travel northeast and from B1 to A1 travel southwest. These acft should use judgment oversteer at those twys. Due to limited PRKG and potential to DMG LGT, unsecured ACFT, mobility ACFT are not permitted to use Colorado Springs FBO unless FBO can guarantee sufficient PRKG CLNC that blast FM ENG thrust and reverse thrust will not impact OTR ACFT, GND PSNL, or EQPT. Cstrms avbl for all mil/civ acft. Ctc US Customs 719-574-6607. See Special Notices—USAF 306 FTG Flight Training Areas, Vicinity of Colorado Springs and Pueblo Colorado.

**AIRPORT MANAGER:** (719) 550-1900**WEATHER DATA SOURCES:** ASOS (719) 380-6748 LLWAS.**COMMUNICATIONS:** ATIS 125.0 719-596-7040 UNICOM 122.95 PTD 122.85 (Ltd to Peterson Ramp Only)

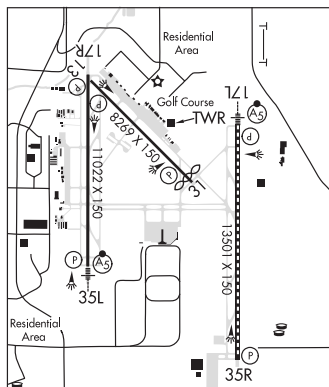
BLACK FOREST RCO 122.25 (DENVER RADIO)

Ⓡ SPRINGS APP CON 120.6 124.0

SPRINGS TOWER 119.9 133.15 GND CON 121.7 CLNC DEL 134.45

Ⓡ SPRINGS DEP CON 124.0

AIRSPACE: CLASS C svc ctc APP CON.



CONTINUED ON NEXT PAGE

CONTINUED FROM PRECEDING PAGE

VOR TEST FACILITY (VOT) 110.4

RADIO AIDS TO NAVIGATION: NOTAM FILE DEN.

BLACK FOREST (H) VORW/DME 112.5 BRK Chan 72 N38°56.67' W104°38.01' 193° 8.9 NM to fld. 6934/8E.

VOR unusable:

- 305°-045° byd 10 NM blo 13,000'
- 305°-045° byd 26 NM

DME unusable:

- 210°-230° byd 30 NM blo 17,000'
- 230°-250° byd 30 NM blo 17,900'
- 250°-267° byd 30 NM blo 17,000'
- 305°-045° byd 27 NM blo 13,000'
- 330°-045° byd 20 NM blo 10,500'

PETEY NDB (MHW/LOM) 407 CO N38°41.66' W104°42.98' 358° 6.7 NM to fld. 5574/8E. NOTAM FILE COS.

ILS/DME 109.1 I-LPI Chan 28 Rwy 17L. Class IIE.

ILS 109.9 I-COS Rwy 35L. Class IIE. LOM PETEY NDB. LOC unusable byd 25° left of course; byd 8NM 10° left of course. Glideslope tch is higher than std.

ILS/DME 109.1 I-AHI Chan 28 Rwy 35R. Class IE. LOC front course unusable byd 15° left of course byd 8 NM due to military restricted airspace.

COMM/NAV/WEATHER REMARKS: Wx opr 24 hrs, incl hol; ctc DSN 834-4337.

MEADOW LAKE (FLY)(KFLY) 14 NE UTC-7(-6DT) N38°56.57' W104°34.20'

DENVER

6878 B NOTAM FILE DEN

H-5A, L-10F

RWY 15-33: H6000X60 (ASPH) S-12.5 MIRL 1.4% up NW

RWY 15: PAPI(P2L)—GA 3.5° TCH 43'. Road.

RWY 33: PAPI(P2L)—GA 3.0° TCH 40'. Rgt tfc.

RWY 15G-33G: 5000X200 (TURF) 1.1% up NW

RWY 08-26: H2074X35 (ASPH-GRVL) 2.3% up W

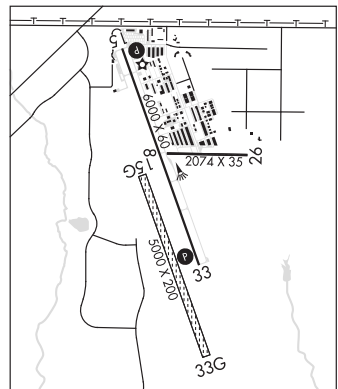
RWY 08: P-line. Rgt tfc.

RWY 26: Road.

SERVICE: S4 FUEL 100LL OX2 LGTACTIVATE PAPI Rwy 15 and Rwy 33, MIRL Rwy 15-33—CTAF.

AIRPORT REMARKS: Attended 1500-0000Z. Wildlife on and invof arpt.

Rwy 15-33 CLOSED to acct over 18,500 pounds. Be alert, intensive USAF student training invof Colorado Springs and Pueblo Colorado. Rwy 26 +4' fence 50' right of centerline 95' from thld. Rwy 26 has +15' road extending east from thld. Road 15' north and parallel to Rwy 08-26. Gliders operate on Rwy 15G-33G and west side of arpt. Rwy 15G-33G has edges and thlds mkd with white tires. Powered paragliders and mobile aerostats opr southeast side of arpt sfc -500'. Twy E numerous potholes indef. Ultralights operating in vicinity of arpt. Rwy 15 is recommended for tkf, touch and go ldrs when effective tail wind is less than 5 kts. Rwy 08-26 1149 ft grvl on E end of rwy, 925 ft asph on W end of rwy. Rwy 26 has—4' terrain 5' from rwy edge first 100' on both sides. Rwy 08-26 edge marked with white reflectors and tires. N/S rwy has edges and thlds marked with white tires. See Special Notices—USAF 306 FTG Flight Training Areas, Vicinity of Colorado Springs and Pueblo Colorado.



AIRPORT MANAGER: 719-339-0928

WEATHER DATA SOURCES: AWOS-3PT 118.450 (719) 683-5371.

COMMUNICATIONS: CTAF/UNICOM 122.7

CLEARANCE DELIVERY PHONE: For CD ctc Colorado Springs Apch at 719-556-9105.

RADIO AIDS TO NAVIGATION: NOTAM FILE DEN.

BLACK FOREST (H) VORW/DME 112.5 BRK Chan 72 N38°56.67' W104°38.01' 084° 3.0 NM to fld. 6934/8E.

VOR unusable:

- 305°-045° byd 10 NM blo 13,000'
- 305°-045° byd 26 NM

DME unusable:

- 210°-230° byd 30 NM blo 17,000'
- 230°-250° byd 30 NM blo 17,900'
- 250°-267° byd 30 NM blo 17,000'
- 305°-045° byd 27 NM blo 13,000'
- 330°-045° byd 20 NM blo 10,500'

COLORADO SPRINGS EAST (See ELLICOTT on page 277)