

**LOGAN-CACHE** (LGU)(KLGU) 3 NW UTC-7(-6DT) N41°47.51' W111°51.10'

4457 B Class IV, ARFF Index A NOTAM FILE LGU

**RWY 17-35:** H9010X100 (ASPH) S-24, D-68 PCN 51 F/C/X/U HIRL

**RWY 17:** MALSR. REIL. PAPI(P2L)—GA 3.0° TCH 40'. Railroad.

**RWY 35:** REIL. PAPI(P2L)—GA 3.0° TCH 39'.

**RWY 10-28:** H4075X60 (ASPH) S-12

**RWY 28:** Railroad.

**RUNWAY DECLARED DISTANCE INFORMATION**

**RWY 10:** TORA-4075 TODA-4075

**RWY 17:** TORA-9010 TODA-9010 ASDA-9010 LDA-9010

**RWY 28:** TORA-4075 TODA-4075

**RWY 35:** TORA-9010 TODA-9010 ASDA-9010 LDA-9010

**SERVICE:** S4 FUEL 100LL, JET A OX 1, 2 LGT ACTIVATE MALSR Rwy 17; PAPI Rwy 17 and Rwy 35; HIRL Rwy 17-35—CTAF.

**AIRPORT REMARKS:** Attended 1500-0200Z $\ddagger$ . 100LL fuel 24 hr credit card svc avbl. For fuel svc after hours call 435-753-2221 or 435-752-5955. Birds on and in/ovf arpt during spring/summer. Extensive flight training in/ovf arpt. Cold temperature rstd arpt. Alt correction required at or blo -15C. Rwy 10-28 dalgt use only.

**AIRPORT MANAGER:** (435) 752-8111

**WEATHER DATA SOURCES:** ASOS 135,275 (435) 752-6941.

**COMMUNICATIONS:** CTAF/UNICOM 122.8

FRANCIS PEAK RCO 122.2. (CEDAR CITY RADIO)

Ⓡ SALT LAKE CENTER APP/DEP CON 127.7

**CLEARANCE DELIVERY PHONE:** For CD etc Salt Lake ARTCC at 801-320-2568.

**RADIO AIDS TO NAVIGATION:** NOTAM FILE CDC.

**BRIGHAM CITY (L) VORW/DME** 112.9 LHO Chan 76 N41°47.57' W112°00.59' 076° 7.1 NM to fld. 5370/14E.

VOR portion unusable:

010°-045° byd 20 NM blo 15,000'

045°-070° byd 20 NM blo 16,000'

070°-110° byd 20 NM blo 15,000'

110°-155° byd 15 NM blo 12,000'

155°-215° byd 15 NM blo 15,000'

155°-215° byd 20 NM

305°-320° byd 20 NM blo 15,000'

DME portion unusable:

010°-045° byd 20 NM blo 15,000'

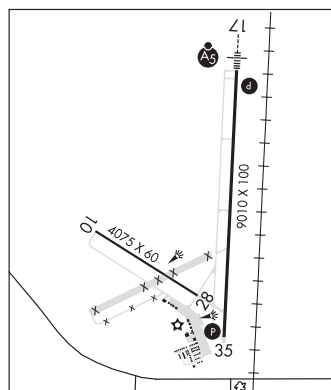
045°-070° byd 20 NM blo 16,000'

070°-125° byd 20 NM blo 15,000'

155°-245° byd 15 NM

245°-320° byd 20 NM blo 15,000'

**ILS/DME** 109.15 I-LGU Chan 28(Y) Rwy 17. Class IE. LOC unusable byd 12° left of course. ILS is unmonitored.



**SALT LAKE CITY**  
H-3D, L-11D  
IAP, AD

**LUCIN** N41°21.78' W113°50.44' NOTAM FILE CDC.

(H) **VORTAC** 113.6 LCU Chan 83 176° 39.6 NM to Wendover. 4400/17E.

VORTAC unusable:

180°-240° byd 35 NM blo 12,000'

**RCO** 122.1R 113.6T (CEDAR CITY RADIO)

**SALT LAKE CITY**  
H-3D, L-11C