

BOISE, IDAHO

HI-ILS Z or LOC Z RWY 10R

LOC I-BOI 111.1	APCH CRS 102°	Rwy Ldg TDZE Arprt Elev 9763 2836 2871	JAL-57 [USAF]	BOISE AIR TERMINAL (GOWEN FLD)	(KBOI)
---------------------------	-------------------------	--	---------------	--------------------------------	--------

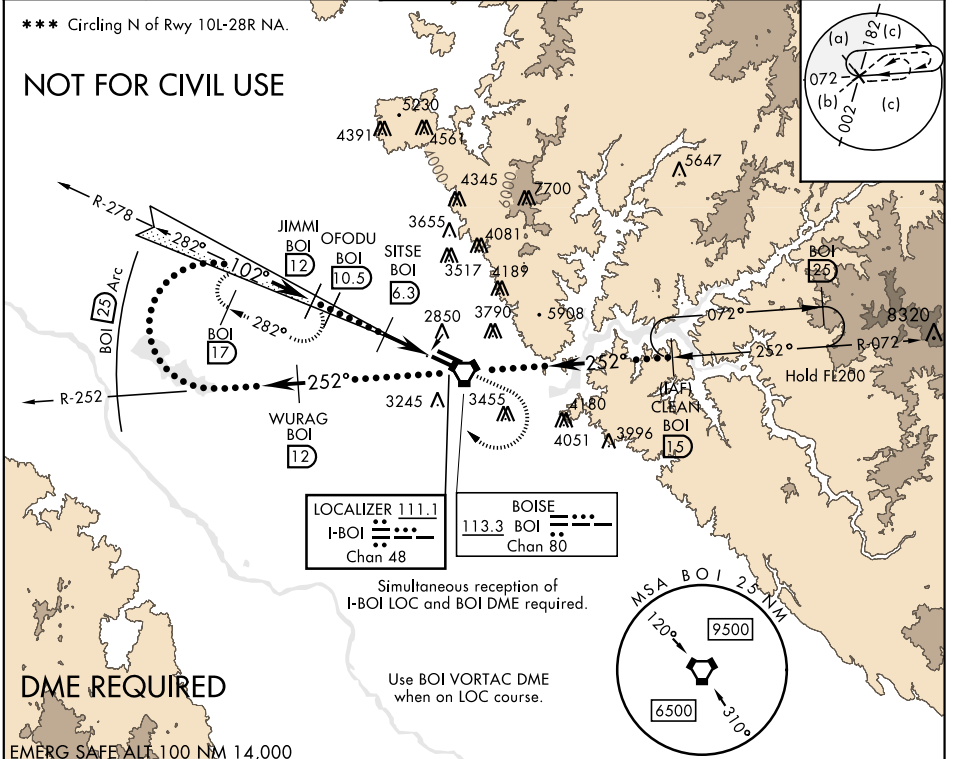
* When ALS inop, increase RVR to 40 and vis to 3/4 mile.
 ** When ALS inop, increase RVR to 55 and vis to 1 1/2 miles.

ALSF-2 MISSED APPROACH: Climb to 3700 then climbing right turn to 5000 on heading 320° and BOI VORTAC R-278 to JIMMI BOI 12 DME and hold.

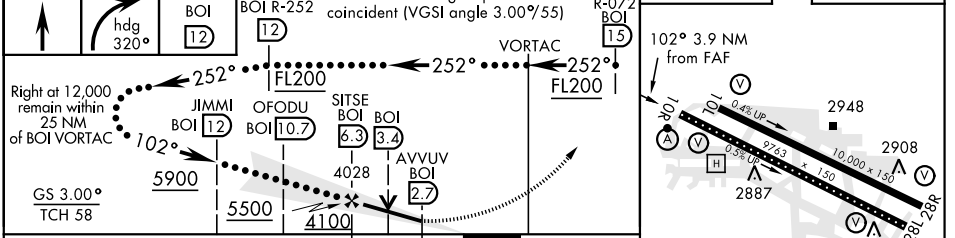
ATIS 123.9 290.4	BIG SKY APP CON 119.6 269.4	BOISE TOWER 118.1 257.8	GND CON 121.7 348.6	CLNC DEL 125.9 323.2	ASOS
----------------------------	---------------------------------------	-----------------------------------	-------------------------------	--------------------------------	------

*** Circling N of Rwy 10L-28R NA.

NOT FOR CIVIL USE



EMERG SAFE ALT 100 NM 14,000	3700	5000	JIMMI BOI 12	WURAG BOI R-252 12	VGSI and ILS glidepath not coincident (VGSI angle 3.00%/55)	CLEAN R-072 BOI 15	ELEV 2871	TDZE 2836
------------------------------	------	------	--------------	--------------------	---	--------------------	-----------	-----------



CATEGORY	C			D		E
S-ILS 10R *		3036/18	200	(200-1/2)		
S-LOC 10R **		3180/30	344	(400-3/8)		
CIRCLING ***	3740-2 1/2 869 (900-2 1/2)		3820-3	949	(1000-3)	

TDZL/CL Rwy 10R-28L
 HIRL Rwy 10L-28R, 10R-28L
 REIL Rwy 10L

BOISE, IDAHO 43°34'N-116°13'W BOISE AIR TERMINAL (GOWEN FLD) (KBOI)

Amdt 4 29MAR18

HI-ILS Z or LOC Z RWY 10R

NW-1, 22 APR 2021 to 20 MAY 2021

NW-1, 22 APR 2021 to 20 MAY 2021