

BOISE, IDAHO

HI-VOR/DME or TACAN RWY 10R

VORTAC BOI 113.3 Chan 80	APCH CRS 098°	Rwy ldg 9763 TDZE 2836 Arprt Elev 2871
--	-------------------------	---

JAL-57 [USAF]

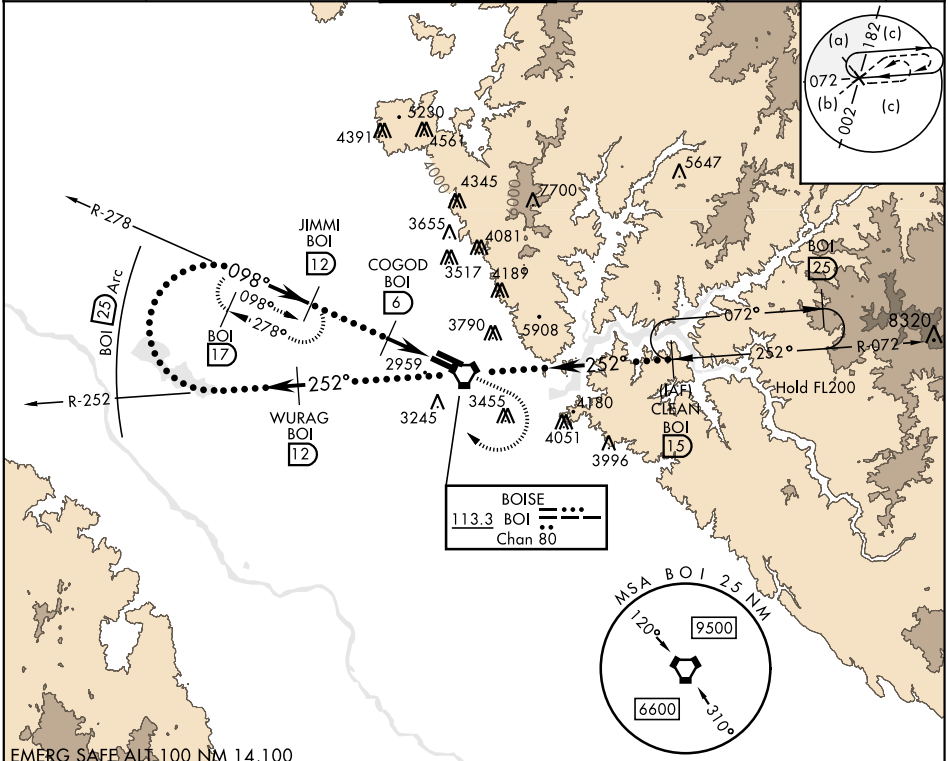
BOISE AIR TERMINAL (GOWEN FLD) (KBOI)

▼ * When ALS inop, increase CAT DE RVR to 60 and vis to 1¼ miles.
** Circling N of Rwy 10L-28R NA.



MISSED APPROACH: Climb to 3700 then climbing right turn to 5000 via heading 320° to intercept BOI VORTAC R-278 then direct JIMMI/12 DME and hold

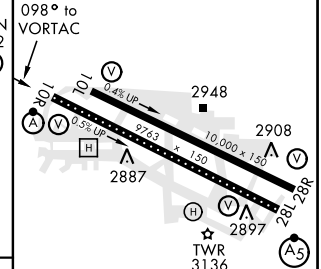
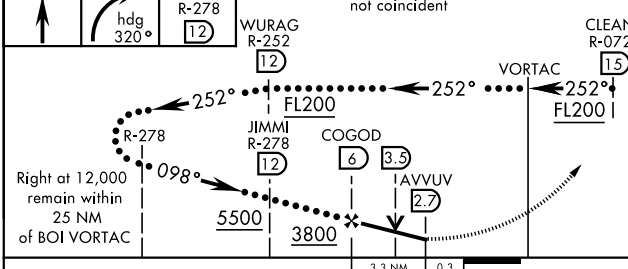
ATIS 123.9 290.4	BIG SKY APP CON 119.6 269.4	BOISE TOWER 118.1 257.8	GND CON 121.7 348.6	CLNC DEL 125.9 323.2	ASOS
----------------------------	---------------------------------------	-----------------------------------	-------------------------------	--------------------------------	------



NW-1, 22 APR 2021 to 20 MAY 2021

NW-1, 22 APR 2021 to 20 MAY 2021

EMERG SAFE ALT 100 NM 14,100	ELEV 2871	TDZE 2836
------------------------------	-----------	-----------



CATEGORY	C	D	E
S-10R *	3220/24 384 (400-½)	3220/50	384 (400-1)
CIRCLING **	3440-1½ 569 (600-1½)	3440-2 569 (600-2)	3860-3 989 (1000-3)

TDZL/CL Rwy 10R-28L	2908
HIRL Rwy 10L-28R, 10R-28L	2897
REIL Rwy 10L	2871

BOISE, IDAHO 43°34'N-116°13'W BOISE AIR TERMINAL (GOWEN FLD) (KBOI)

Amdt 1 07MAR13

HI-VOR/DME or TACAN RWY 10R