

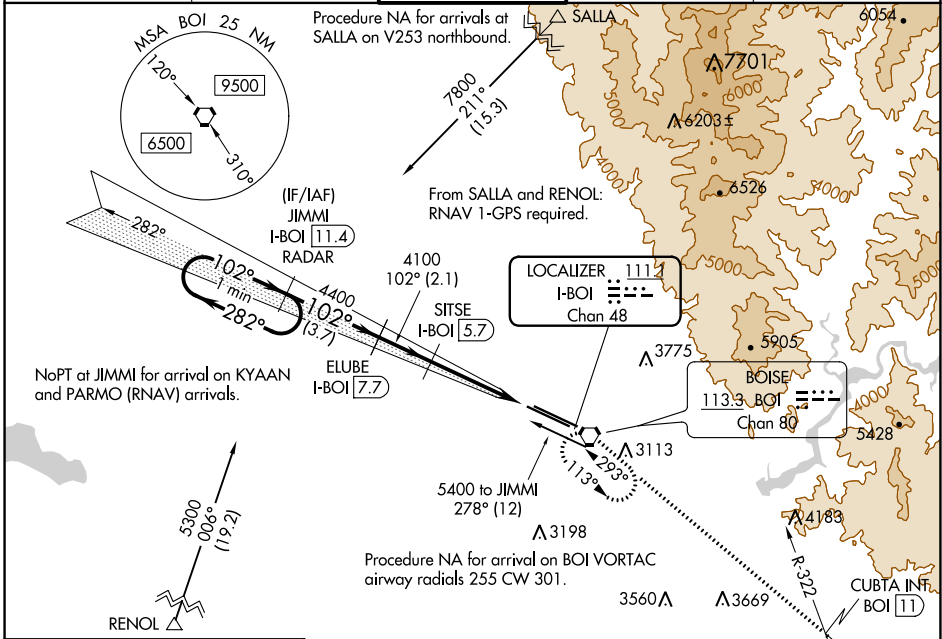
LOC/DME I-BOI	APP CRS	Rwy ldg	9763
111.1	102°	TDZE	2836
Chan 48		Apt Elev	2871

ILS Y RWY 10R (CAT II & III)

BOISE AIR TRML/GOWEN FLD (BOI)

<p>DME required.</p> <p>CAT II: RVR 1000 authorized with specific OPSPEC, MSPEC, or LOA approval and use of autoland or HUD to touchdown.</p>	<p>ALSIF-2</p>	<p>MISSED APPROACH: Climb to 6000 on BOI VORTAC R-113 to CUBTA INT/BOI VORTAC 11 DME and right turn direct BOI VORTAC and hold.</p>
---	----------------	--

D-ATIS 123.9 290.4	BIG SKY APP CON 119.6 269.4	BOISE TOWER 118.1 257.8	GND CON 121.7 348.6	CLNC DEL 125.9 323.2
------------------------------	---------------------------------------	--	-------------------------------	--------------------------------

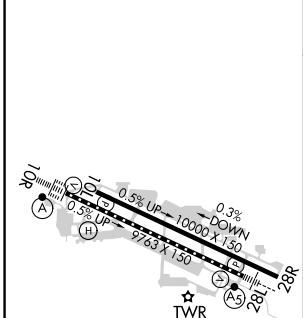


NW-1, 22 APR 2021 to 20 MAY 2021

NW-1, 22 APR 2021 to 20 MAY 2021

ELEV 2871	D TDZE 2836
-----------	--------------------

RADAR or DME REQUIRED



VGSIs and descent angles not coincident (VGSIs Angle 3.00/TCH 64).																		
5000	4400	4100	6000															
102°	102°	102°	114.9 LIA															
<table border="1"> <tr> <th>CATEGORY</th> <th>A</th> <th>B</th> <th>C</th> <th>D</th> </tr> <tr> <td>S-ILS 10R</td> <td colspan="4">CAT II RA 102/12 100 DA 2936</td> </tr> <tr> <td>S-ILS 10R</td> <td colspan="4">CAT III RVR 03</td> </tr> </table>				CATEGORY	A	B	C	D	S-ILS 10R	CAT II RA 102/12 100 DA 2936				S-ILS 10R	CAT III RVR 03			
CATEGORY	A	B	C	D														
S-ILS 10R	CAT II RA 102/12 100 DA 2936																	
S-ILS 10R	CAT III RVR 03																	

REIL Rwy 10L
TDZ/CL Rws 10R and 28L
HIRL Rws 10L-28R and 10R-28L

CATEGORY II & III ILS - SPECIAL AIRCREW & AIRCRAFT CERTIFICATION REQUIRED