

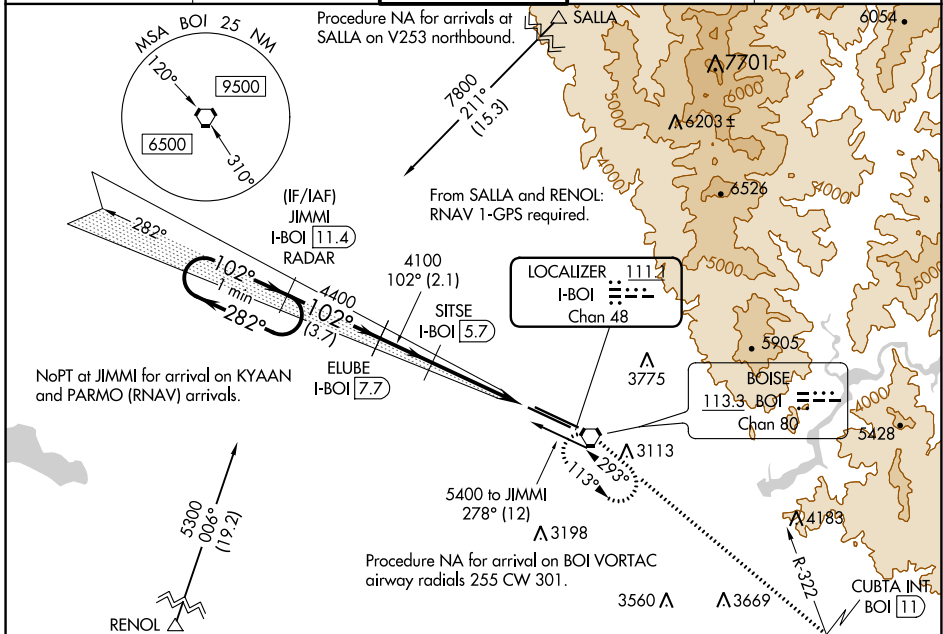
LOC/DME I-BOI 111.1 Chan 48	APP CRS 102°	Rwy ldg TDZE Apt Elev 9763 2836 2871
---	------------------------	--

ILS Y RWY 10R (SA CAT I)

BOISE AIR TRML/GOWEN FLD (BOI)

<p>DME required. Requires specific OPSPEC, MSPEC, or LOA approval and use of HUD to DH.</p>	<p>ALSIF-2 Rwy 10R</p>	<p>MISSED APPROACH: Climb to 6000 on BOI VORTAC R-113 to CUBTA INT/BOI VORTAC 11 DME and right turn direct BOI VORTAC and hold.</p>	

D-ATIS 123.9 290.4	BIG SKY APP CON 119.6 269.4	BOISE TOWER 118.1 257.8	GND CON 121.7 348.6	CLNC DEL 125.9 323.2
------------------------------	---------------------------------------	--	-------------------------------	--------------------------------

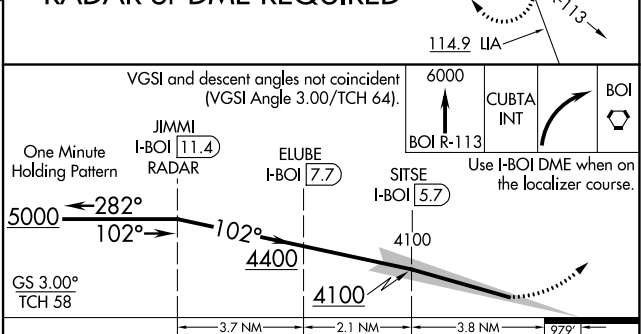
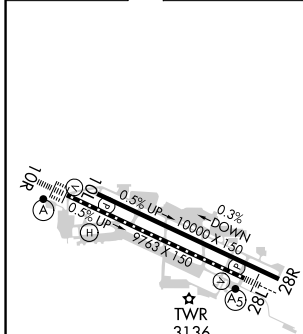


NW-1, 22 APR 2021 to 20 MAY 2021

NW-1, 22 APR 2021 to 20 MAY 2021

ELEV 2871		TDZE 2836
-----------	--	-----------

RADAR or DME REQUIRED



CATEGORY	A	B	C	D
S-ILS 10R	RA 170/14 150 DA 2986			

SA CATEGORY I ILS - SPECIAL AIRCREW & AIRCRAFT CERTIFICATION REQUIRED